

TRI-BASIN NATURAL RESOURCES DISTRICT

2025 HAND PLANT ORDER FORM

NAME: _____ DATE: _____

ADDRESS: _____

CITY/STATE/ZIP: _____ PHONE: _____

ORDERS MUST BE IN MULTIPLES OF 25.

QUANTITY	SPECIES
	CONIFERS
	AUSTRIAN PINE
	COLORADO BLUE SPRUCE
	PONDEROSA PINE
	RED CEDAR (Eastern)
	NORWAY SPRUCE
	BROADLEAFS
	BLACK WALNUT
	BUR OAK
	HACKBERRY
	RED OAK
	SWAMP WHITE OAK
	SHRUBS
	AMERICAN PLUM
	COTONEASTER
	CHOKECHERRY
	ELDERBERRY
	RED OSIER DOGWOOD
	LILAC
	SAND CHERRY
	SKUNKBUSH SUMAC
	Total # of Trees
	Multiply total # of trees x 1.00
	Mulch x .45/foot
	Staples x .15
	Subtotal
	Tax (Holdrege 7%, Minden 7.5%, Elwood 6.5%)
	TOTAL AMOUNT DUE/PAID

Tree Order Deadline is April 1, 2025.

TREES PROTECT LIVESTOCK

- Increase calf survival by 12%
- Minimize winter stress
- Increase feed efficiency

TREES IMPROVE PROPERTY

- Reduce heating/cooling costs
- Increase property value
- Reduce noise and dust

TREES IMPROVE COMMUNITY

- Lower stress & increase wellbeing
- Improve air & water quality
- Stimulate economic development

TREES PROTECT WILDLIFE

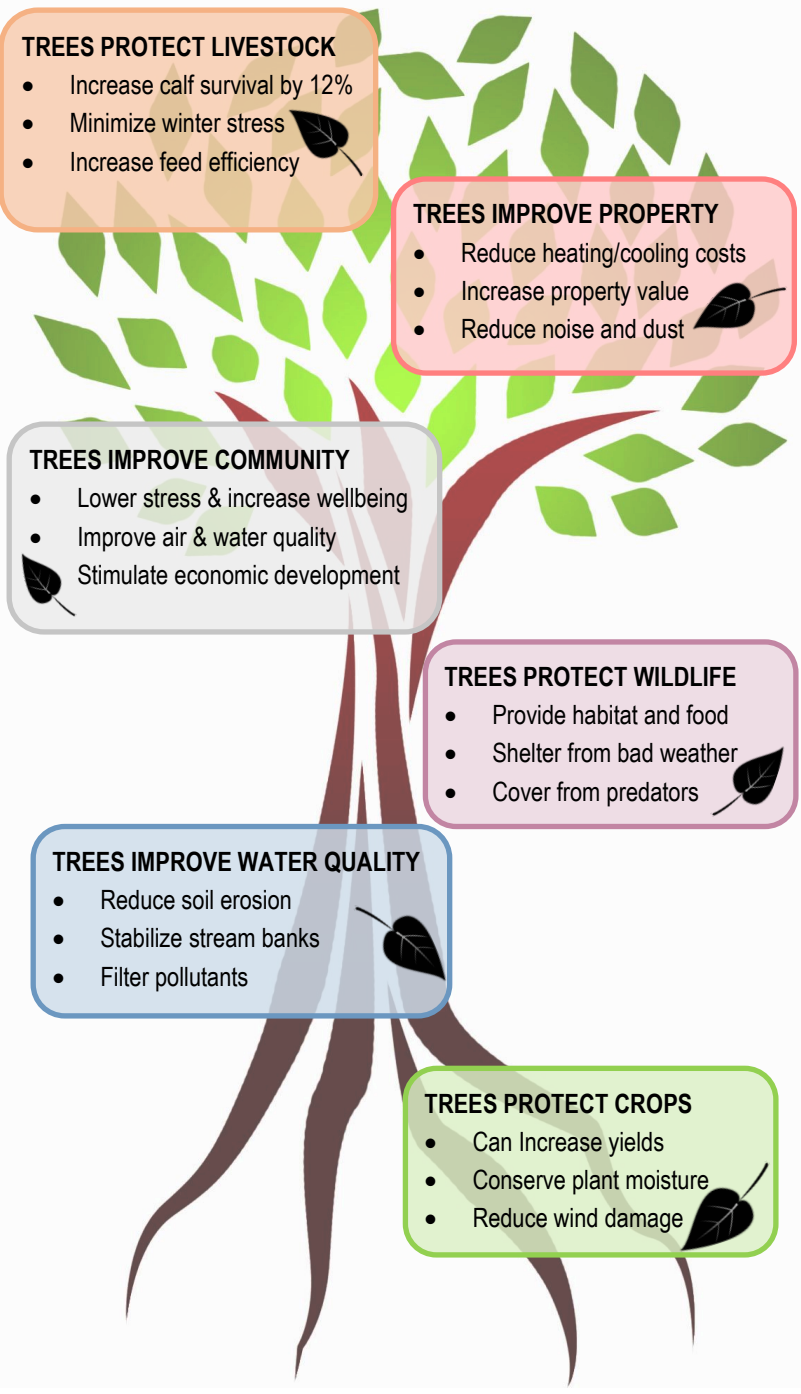
- Provide habitat and food
- Shelter from bad weather
- Cover from predators

TREES IMPROVE WATER QUALITY

- Reduce soil erosion
- Stabilize stream banks
- Filter pollutants

TREES PROTECT CROPS

- Can Increase yields
- Conserve plant moisture
- Reduce wind damage



Tree Pickup will be at: _____ Tri-Basin NRD _____ Minden NRCS _____ Elwood NRCS

WHY PLANT A WINDBREAK?

Windbreaks and shelterbelts provide many benefits. Windbreaks planted along field boundaries reduce soil erosion by reducing wind velocity. Shelterbelts planted around farmsteads reduce heating costs in homes and shop buildings. Shelterbelts can protect livestock from blizzards and serve as "living snow fences." Trees and shrubs also provide food, shelter and nesting habitat for many species of birds and mammals.

NRD TREE & SHRUB PLANTINGS

Contact the NRD Office or your county NRCS for help with determining the type and number of trees and shrubs you need. The technician will make arrangements for the tree order and planting service. The NRD will plant the trees according to the plan.

Trees are planted in the spring as soon as conditions are suitable. The NRD tree planting crew will notify landowners of the approximate date and time of planting.

SITE PREPARATION

Good site preparation is a key to rapid tree growth and survival. The best site preparation begins the year before the trees are planted. On heavier soils, working the ground to kill competing vegetation is an excellent method of preparing the site. The technician assisting in planning a windbreak or habitat plot can advise you about the type of site preparation needed. The technician can also help you determine if herbicide carryover will be a problem.

WEED CONTROL

Weed control in the form of plastic mulch is available through the district. This woven material is installed over the trees after planting. Slots are then cut for the trees. Plastic mulch not only eliminates weeds but also helps to preserve soil moisture.

PRICES	
Trees & Shrubs	\$1.00 each/multiples of 25
PLANTING SERVICE	
Tree planting (no mulch)	\$0.55/ft
Trees, tree planting, mulch and mulch installation	\$2.25/ft
Drip tape	\$0.30/ft
Drip tape set-up	Minimum \$35.00
Pull-in Charge	\$55.00
Renovations*	\$275.00
Shrub thickets*	\$330.00
Minimum 850 foot per planting	
Plastic Mulch (Material Only)	\$0.45 per ft
Stakes	\$0.15 each
Seedling Tubes	\$1.50 each
Prices are subject to change.	
*Contact Tri-Basin NRD for site review.	

PLANTING YOUR OWN TREES

You can order trees and shrubs at the NRD or your local NRCS Office. Orders must be in multiples of 25 per species. We will send you a postcard when your trees arrive. We also have tree spades available to rent.

DRIP TAPE

Tri-Basin has subsurface "drip tape" available for watering trees planted by the District. The water source could be a portable tank or a hydrant. Check with the TBNRD Land Resource Coordinator for more information.

COST-SHARE

Tri-Basin NRD offers cost-share funds for tree plantings and plastic mulch installation. You should apply at your county NRCS office before March 1.

All sites must be properly prepared before planting to qualify for cost-share. Reimbursement is made only after full payment is received. The minimum total cost of plantings eligible for cost-share is \$500. Plantings must be a minimum of 850 feet.

Cost-share may also be available from your county USDA office. Pheasants Forever and Nebraska Game & Parks Commission also offer programs for wildlife habitat improvement. NRCS staff can help you determine which programs have funds available and best suit your needs.

BILLING ON NRD PLANTINGS

Tri-Basin NRD bills for trees/tree planting service after completion. Full payment is due upon receipt of the billing. Cost-share payments will not be made until payment is received at the Tri-Basin or NRCS office.