

## Nebraska Forest Service: Emerald Ash Borer Will Kill Ash Trees

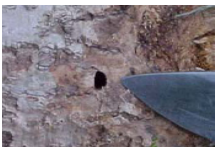
Reprinted from the Nebraska Forest Service

The emerald ash borer, an invasive pest and a very serious threat to all North American ash (*Fraxinus* spp.), has become well established in North America in the last 10 to 15 years. The insect easily kills all ash species regardless of their health, size or age. First identified in Detroit, Michigan in 2002, the insect has spread rapidly to five eastern states and one Canadian province and is steadily expanding outward. It moves to new areas primarily by the transportation of ash firewood and other ash products (pallets, sawlogs etc). Early detection of the insect is extremely difficult, and in areas where high numbers of the insect are present, no ash are surviving except high-value trees treated individually with insecticides. Current eradication efforts to contain the emerald ash borer are failing and the insect is expected to eventually spread throughout North America wherever ash species are present. Emerald ash borer has cost municipalities, property owners, nursery operators, forest product industries and the related green industry tens of millions of dollars from tree removals, other control efforts, and the loss of the ash resource.

Considering both the apparent inevitability that the emerald ash borer will reach Nebraska and that the current ash component in many communities and rural areas of Nebraska is already well above recommended levels (maximum of 10% of any one group of closely related species), the Nebraska Forest Service will no longer recommend ash for planting in the state, and ash will be removed from the lists of acceptable tree species in tree-planting grant programs we administer. In the place of ash, the Nebraska Forest Service will strongly promote diversity in tree plantings and will consider the amount of species diversity in proposals submitted for tree-planting grants. The Nebraska Forest Service will continue to educate citizens and municipalities about the emerald ash borer and believes strongly that those who wish to plant ash should be informed about the coming impact of the insect and about the benefits of tree diversity for avoiding similar major losses from future invasive pests.

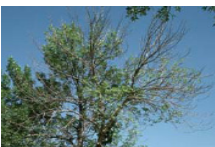
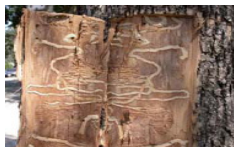
### How to Recognize Emerald Ash Borer

- Slender beetle
- Emerald green
- 1/2 inch long



- D-shaped exit holes in ash bark
- 1/8 inch diameter

- Zig-zag tunnels under ash bark
- Tunnels packed with frass/sawdust



- Dieback beginning at top of ash tree

### Emerald Ash Borer Facts

- Discovered in 2002 killing trees near Detroit, Michigan
- Native to eastern Asia
- Kills trees by tunneling beneath the bark
- Trees usually die within 3 years following infestation
- Easily transported to new areas in infested firewood
- Threatens to wipe out Nebraska's 30 million ash trees
- Kills all North American species of ash\* including green, white, black and blue ash and their cultivars such as: Marshall's Seedless, Patmore, Bergeson, Cimmarron, Summit, Autumn Purple, Autumn Applause, Autumn Blaze, Fallgold, True Blue

\*Emerald ash borer does not attack mountain-ash, which is not a true ash.

### How to Recognize Ash Trees



- Compound leaves (5-11 leaflets per leaf)
- Leaflets 2-5 inches long

- Paddle-shaped seeds
- 1-2 inches long
- Some trees are seedless



Ash twigs occur in pairs on opposite sides of a branch.



Twigs of many other trees occur singly and alternate from side to side.



# Managers Message

By: John Thorburn

## Nebraska's NRDs Celebrate 35 Years of Conservation

Natural Resources Districts (NRDs) were created by the Nebraska Unicameral in 1969, by combining 154 special-purpose districts (soil conservation districts, groundwater conservation districts, drainage districts, etc.) into 23 districts with multiple response



Bill Umberger, former Tri-Basin NRD General Manager, drilled grass for a grass test plot in Gosper County in 1976.

bilities. This legislation was the most substantial reorganization and consolidation of local government entities in Nebraska history. Tri-Basin NRD was created by merging the Gosper, Phelps and Kearney County Soil Conservation Districts.

Implementation of the NRD law was delayed when a few of those special-purpose districts sued to avoid being absorbed into the NRD system. The lawsuits were eventually settled or dismissed, allowing NRDs to start operation on July 1, 1972.

Most NRD boundaries were drawn based on watershed boundaries. The intent was that integrated management of all aspects of water and soil conservation within watersheds would be more effective than previous piecemeal efforts. Tri-Basin NRD is an exception to this rule, because it includes portions of the Platte, Republican and Little Blue watersheds.



This NRD includes multiple watersheds because it was recognized that the "Groundwater Mound" created as a result of diverting irrigation water from the Platte through the Central Public Power and Irrigation District (CNPPID) canal system would create management challenges that required coordinated, unified conservation policies.

Tri-Basin NRD has utilized many of the various authorities granted by the Unicameral. We manage groundwater to protect quantity, quality and groundwater-derived streamflows. We plant trees and shrubs for windbreaks and wildlife habitat. We operate several drainage ditches that improve the productivity of cropland in areas with high groundwater tables. We conduct educational programs about soil and water conservation for schoolchildren and adults. We work with USDA-Natural Resources Conservation Service, CNPPID, and UN-L Cooperative Extension to demonstrate agricultural best management practices that farmers can adopt to save water and soil. We also provide cost-share funds to make adoption of these practices more affordable.

Natural Resources Districts are proud of our tradition of managing natural resources in a manner that is responsive to local needs and which accounts for local conditions. The Tri-Basin NRD Board of Directors are elected by the people of Gosper, Phelps and Kearney counties, and they strive to serve the best interests of their constituents. Local control is part of the legacy that the NRDs inherited from their predecessor districts. The mission of the NRDs has expanded over the years, but local control has remained a constant throughout our 35 year history.



Tri-Basin NRD Directors elected in the fall of 1978: Arnold Krohn, Chuck Tomsen, Norman Schroeder, Gary Lindstrom, Rick Anderbery and Doyle Lavene.

**Nebraska's NRDs**  
Helping You Conserve  
Natural Resources  
for 35 Years  
— 1972-2007 —



## Hagan is New Elwood Office Secretary



Lori Hagan began working in the Elwood Field Office on July 30. Lori and her husband, Jerry, have lived in Elwood for 16 years. They have 2 grown children: Niki Townsend of Elwood and Josh Hagan of Lincoln. They also have 2 grandsons who they enjoy very much. Currently, much of Lori's free time is taken up with remodeling their home, a

task which she says is big, but satisfying. She also enjoys being outside, spending time with family and watching movies.

Feel free to stop in the Elwood office and welcome Lori to the Tri-Basin NRD staff!

## Nitrogen Management Crop Reports Due

Nitrogen Management Reports for the 2007 crop year will be due by December 31, 2007 for producers in Phase II and Phase III of the Tri-Basin Groundwater Quality Management Area. The reports need to have correct ID numbers (either well registration number or CNPP&ID ID number for each legal), as well as the results of water and soil samples taken before the 2007 crop was planted. If you have fields in the Phase II or Phase III areas, you should receive a list of fields that require Nitrogen Management Crop Reports in the mail. If you need reporting forms, please contact the Tri-Basin NRD office.

Also, remember to take your soil samples this fall or in early spring for your 2008 crop reports.



## 2007 Board of Directors Tour

Tri-Basin NRD Board members and staff toured parts of Kearney County on August 14. Stops included Nature's Mosaic north of Axtell and the USDA Service Center in Minden. Along the tour, Bob Hansen (pictured above) of Central Nebraska Central Public Power & Irrigation District gave information about the Phelps County Canal system. The tour ended at Yanney Park in Kearney for lunch and the August board meeting.

## Water Use Reminder

Water Use Reports for the 2007 irrigation season will be mailed out in October and are due in November. Producers who have wells in the Republican Basin, received cost-share for flowmeters, or have wells that were permitted on or after September 15, 2004 are required to report their water use. Those who are also involved in the EQIP program received a combined water use report for both programs at the beginning of the irrigation season.

## Domestic Water Testing Kits Available

Rural residents in Gosper, Phelps and Kearney Counties can have their household drinking water tested for nitrates and bacteria free of charge once a year through a program offered by Tri-Basin Natural Resources District.



Any district resident who has a private household water well can pick up a free water testing kit from the Tri-Basin NRD office at 1308 Second Street in Holdrege. The kits are also available at the USDA-Natural Resources Conservation District offices in Elwood, Minden and Holdrege. The kits include instructions for obtaining the water samples. Household owners mail the samples to Ward Laboratories in Kearney for testing. Test results are sent to Tri-Basin NRD office, where they are recorded in a water quality database. The results are then forwarded to the household owner, along with information on protecting water quality.

For more information on this program, please contact Tri-Basin NRD at (308) 995-6688 or 1-877-995-6688.

ONLINE

<http://dnrdata.dnr.ne.gov/wellssql/?&.....> Dept. of Natural Resources Well Data  
<http://water.usgs.gov/ogw.....> Ground water information  
[http://www.cnppid.com/Elevation\\_Flows2.htm.....](http://www.cnppid.com/Elevation_Flows2.htm.....) Reservoir elevation/Platte River Flow  
<http://tribasinnrdr.org/domesticwatertest.html.....> Domestic Nitrate Testing  
<http://www.arborday.org.....> Tree recommendations, identification  
<http://www.websoilsurvey.nrcs.usda.gov/app/.....> Determining soil type  
[http://water.usgs.gov/cgi-bin/daily\\_flow?ne.....](http://water.usgs.gov/cgi-bin/daily_flow?ne.....) Current water resource conditions for Nebraska

# CALENDAR OF EVENTS

(All meetings are at NRD office in Phelps County Ag Center unless otherwise noted.)

## October

- October 8 - Columbus Day (office closed)
- October 9 - NRD Board Meeting at 7:30 p.m.\*

## November

- November 4 - Daylight Saving Time ends
- November 12 - Office closed for Veteran's Day
- November 13 - NRD Board Meeting at 7:30 p.m.\*
- November 22 - Thanksgiving (office closed)
- November 23 - Office closed

## December

- December 11 - NRD Board Meeting at 1:30 p.m.\*
- December 24 - Christmas Eve (office closed)
- December 25 - Christmas Day (office closed)

\* Times are tentative

## WATER CONSERVATION TIP

Monitor your water bill for unusually high use.  
Your bill and water meter are tools that can help you discover leaks.



TRI-BASIN TOPICS is a publication of the  
Tri-Basin Natural Resources District,  
1308 Second Street,  
Holdrege, NE 68949 (308) 995-6688  
Toll Free 877-995-6688  
E-mail [tribasin@tribasinnrld.org](mailto:tribasin@tribasinnrld.org)

### TRI-BASIN NRD STAFF

John Thorburn ..... General Manager  
Richard Holloway ..... Assistant Manager  
Charles Brooks ..... Land Resources Coordinator  
Carie Lynch ..... Administrative Secretary  
Roger David ..... Conservation Technician  
Steve Nelson ..... Land Resource Technician  
Tammy Fahrenbruch ..... Office Manager  
Esther Smith ..... Office Clerk  
Nicole Salisbury ..... Office Assistant  
Ruth Nielsen ..... Minden Office Secretary  
Lori Hagan ..... Elwood Office Secretary  
Patty Abrahamson ..... Holdrege Office Secretary

A mailing list is maintained and requests to be placed on the list should be sent to the above address. Comments and suggestions may be addressed to the General Manager.

### TRI-BASIN NRD BOARD OF DIRECTORS

Todd Garrelts, Chairman	Phyllis Johnson
Holdrege, NE	Bertrand, NE
David Nickel, Vice Chairman	Brad Lundeen
Keamey, NE	Wilcox NE
Ed Harris, Treasurer	David Nelson
Loomis, NE	Upland, NE
Larry Reynolds, Secretary	David Raffety
Lexington, NE	Kearney, NE
Brian Bergstrom	David Olsen
Axtell, NE	Minden, NE
Harold D. Erickson	Ray Winz
Holdrege, NE	Holdrege, NE
Dick Helms	
Arapahoe, NE	

**IN THIS ISSUE**  
\*Emerald Ash Borer  
\*35th Anniversary of NRDS  
\*Domestic water testing kits  
available

RETURN SERVICE REQUESTED

**1308 Second Street  
Holdrege, NE 68949**

*Natural Resources District*



**Non-Profit Permit  
U.S. Postage  
PAID  
Holdrege, NE 68949  
Permit No. 220**