



GROUNDWATER UPDATE

Tri-Basin Natural Resources District

STATIC WATER MEASUREMENT WELLS



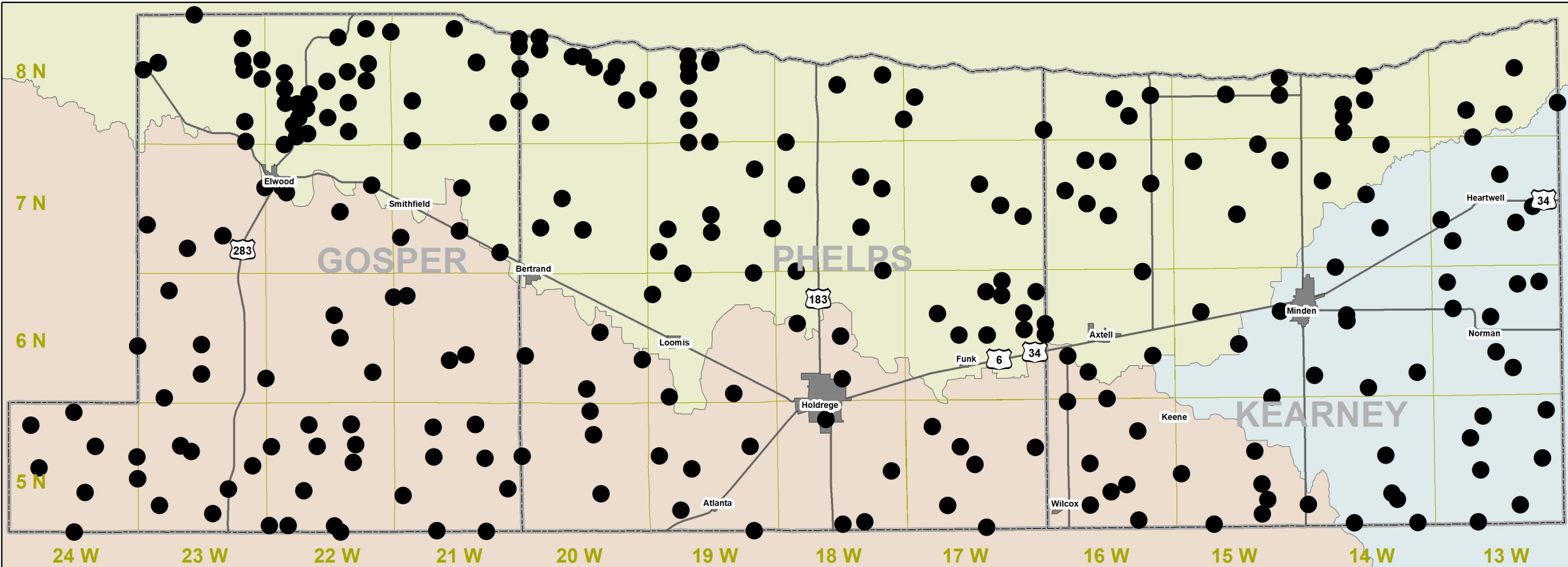
TBNRD began measuring irrigation wells during late 1970s.
Currently measure 90 irrigation wells
Spring & Fall seasonal measurement

Dedicated Observation Well Network began mid-2000s.
93 locations - 43 are "nested"
136 observation wells
Measurement taken every 12 hours

CNPPID contributes seasonal measurements.
Cooperative effort produces 350+ seasonal measurements

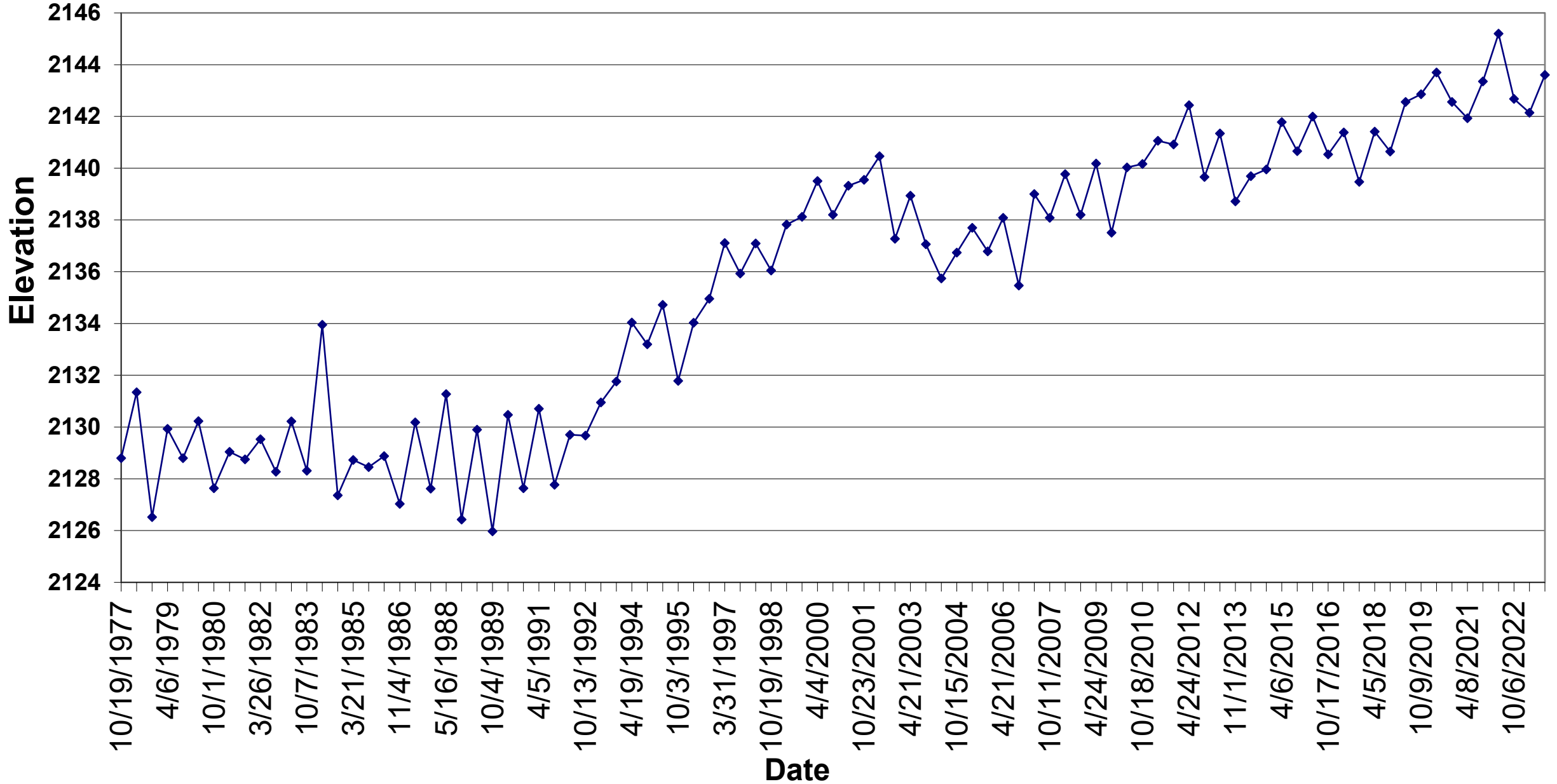
Tri-Basin Natural Resources District

Static Water Measurement Wells

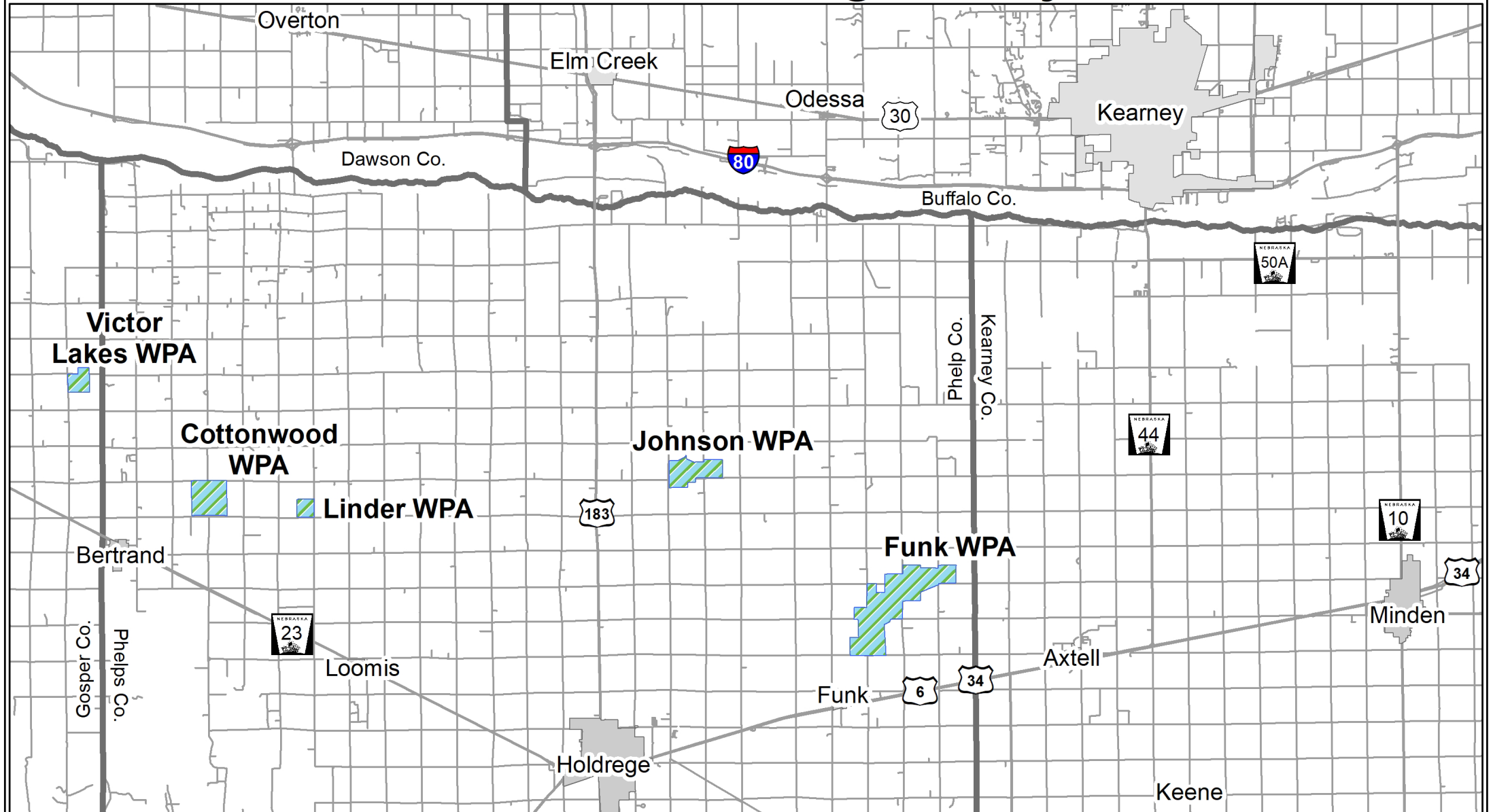


Surface Elevation
2345.60'

SWSW 34-5N-18W / P-16

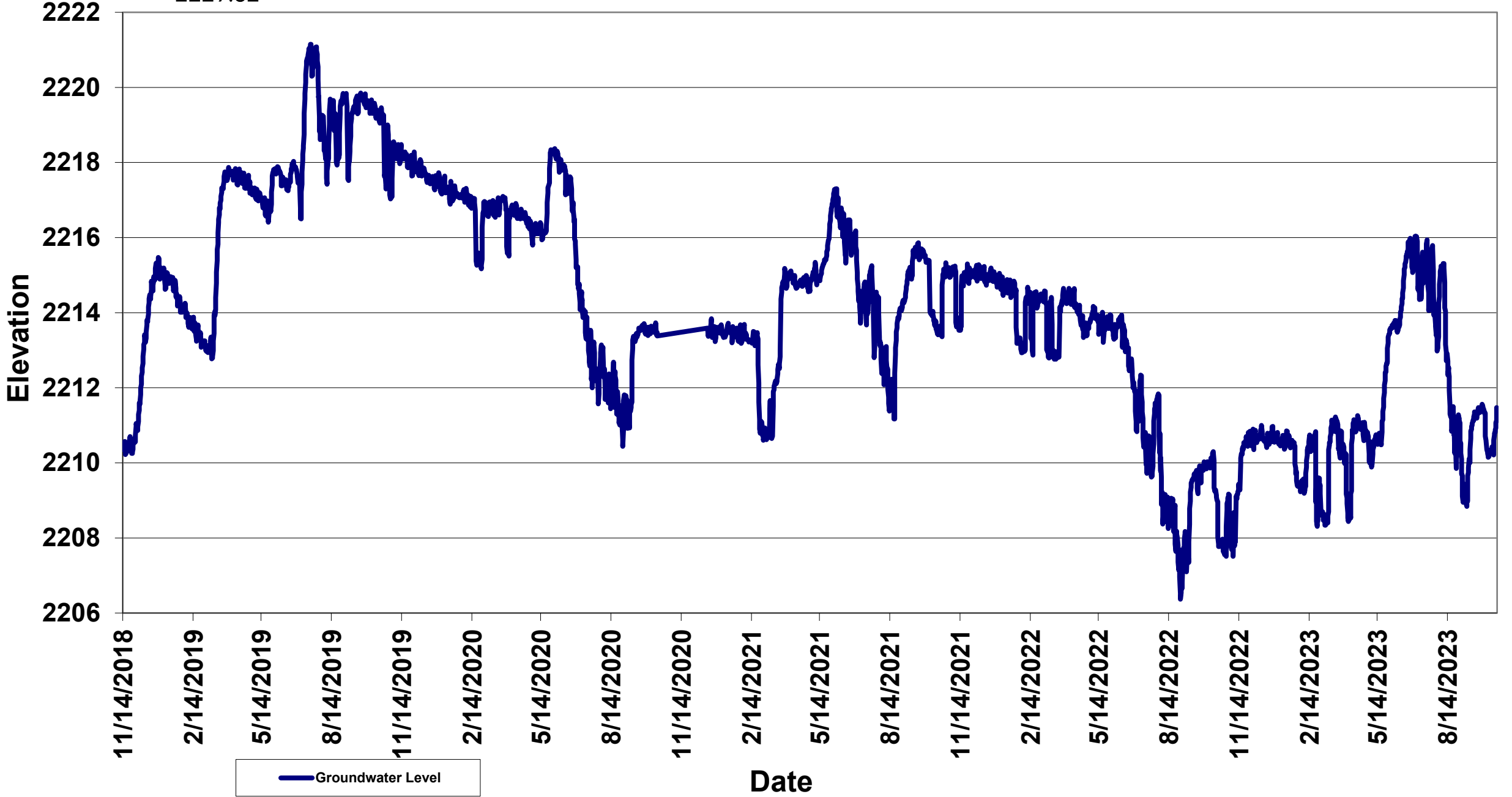


Wetland Recharge Project



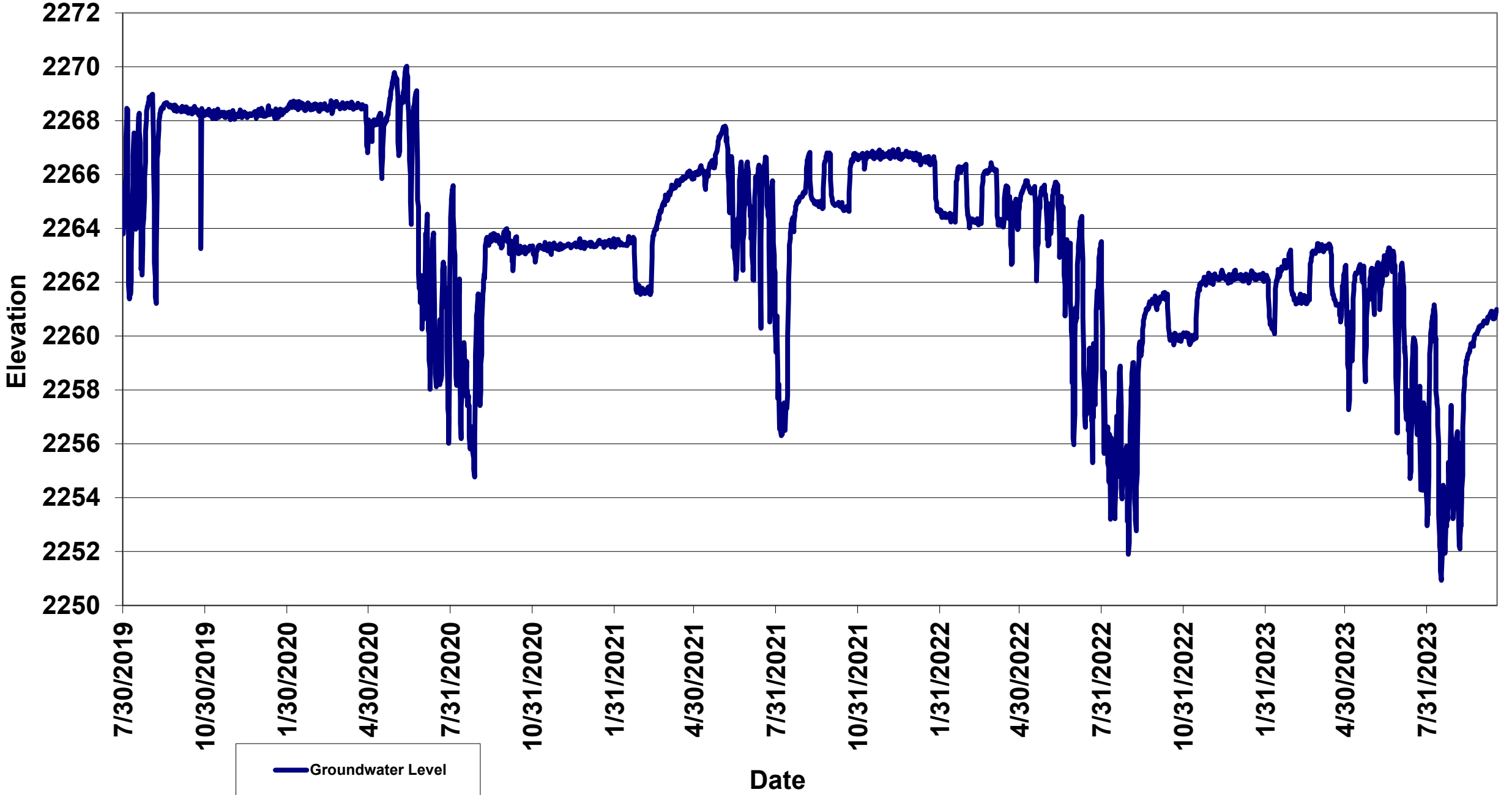
Surface Elevation
2229.82

NENE 10-6N-17W P-148
Funk Lagoon - Peterson



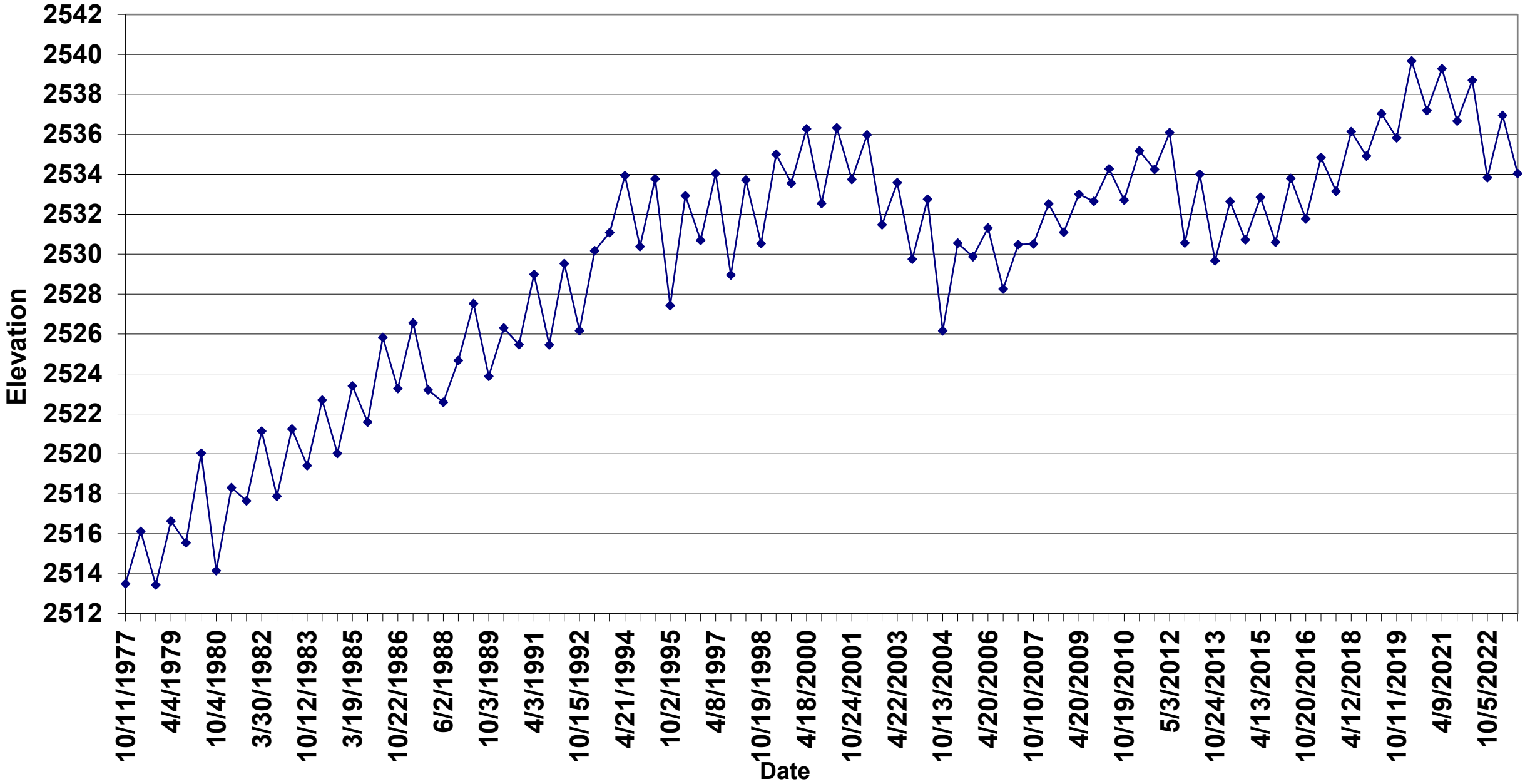
Surface Elevation
2274.53'

SWSW 23-7N-18W P-151
Johnson Lagoon Southwest



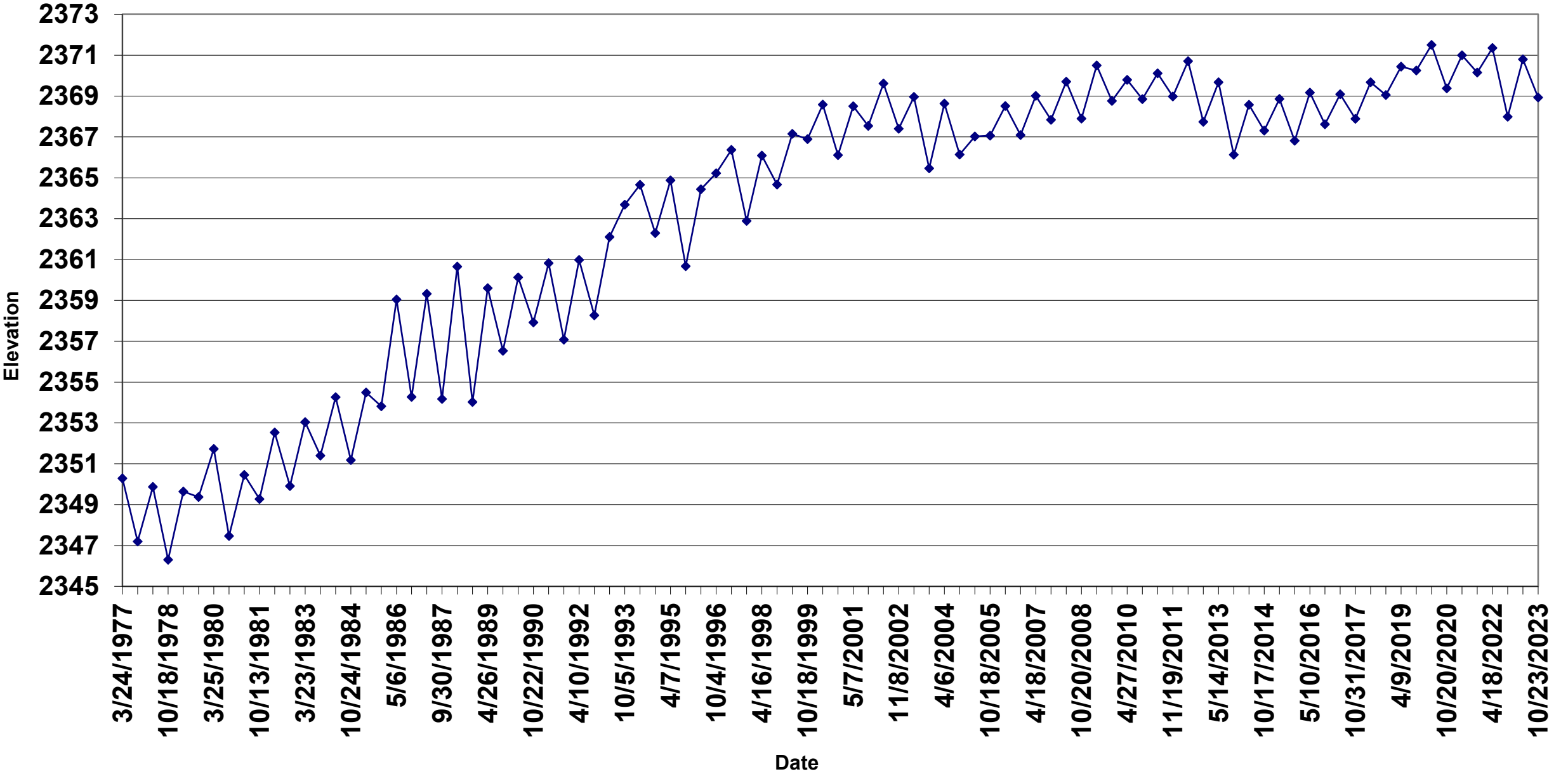
Surface Elevation
2667.10'

NESW 18-8N-23W / G-05

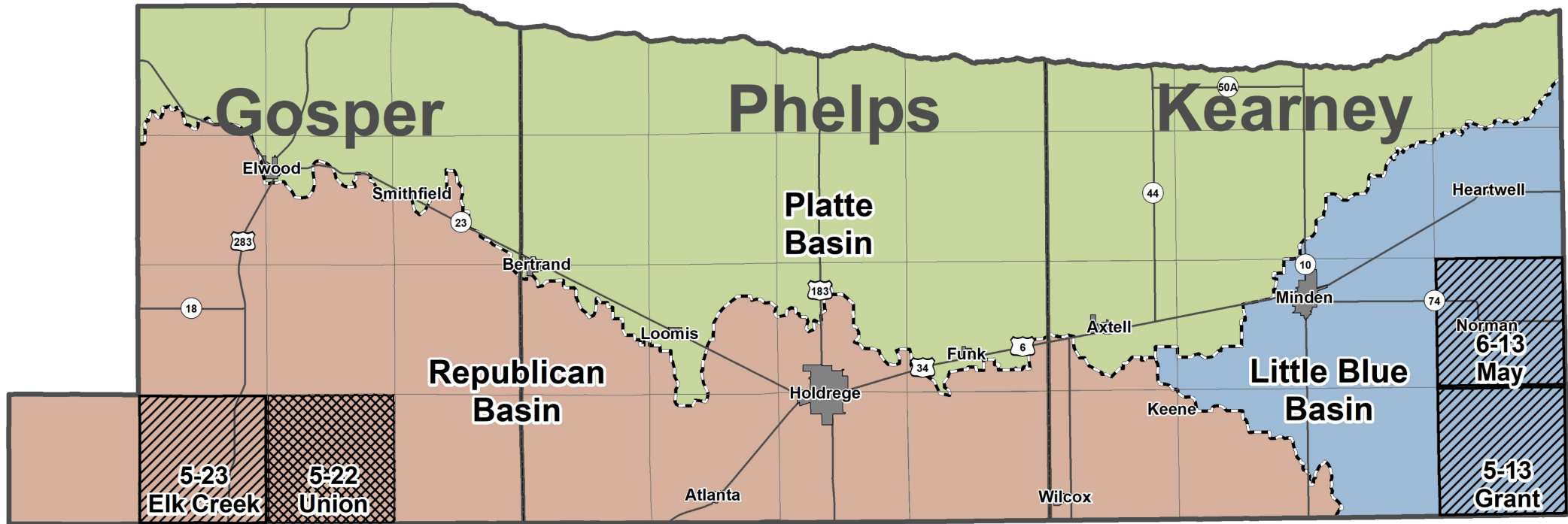


Surface Elevation
2500.60'

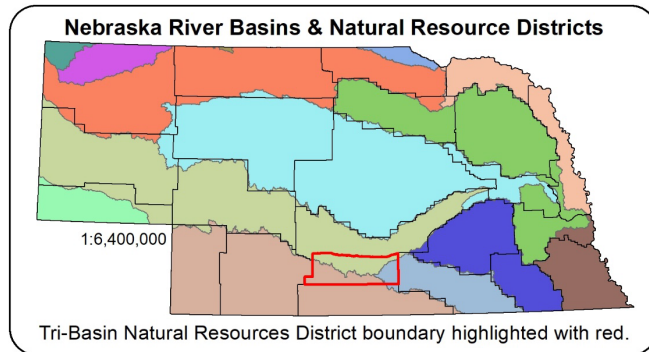
NWNW 07-6N-21W / G-16



Tri-Basin Natural Resources District Groundwater Quantity Management

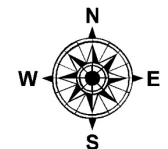


Scale = 1:290,000



Designation		River Basin		Community	
	Phase II		Republican		Community
	Phase III		Little Blue		Highway
			Platte		County
					Township

*The entire district is regulated under Phase I regulations.

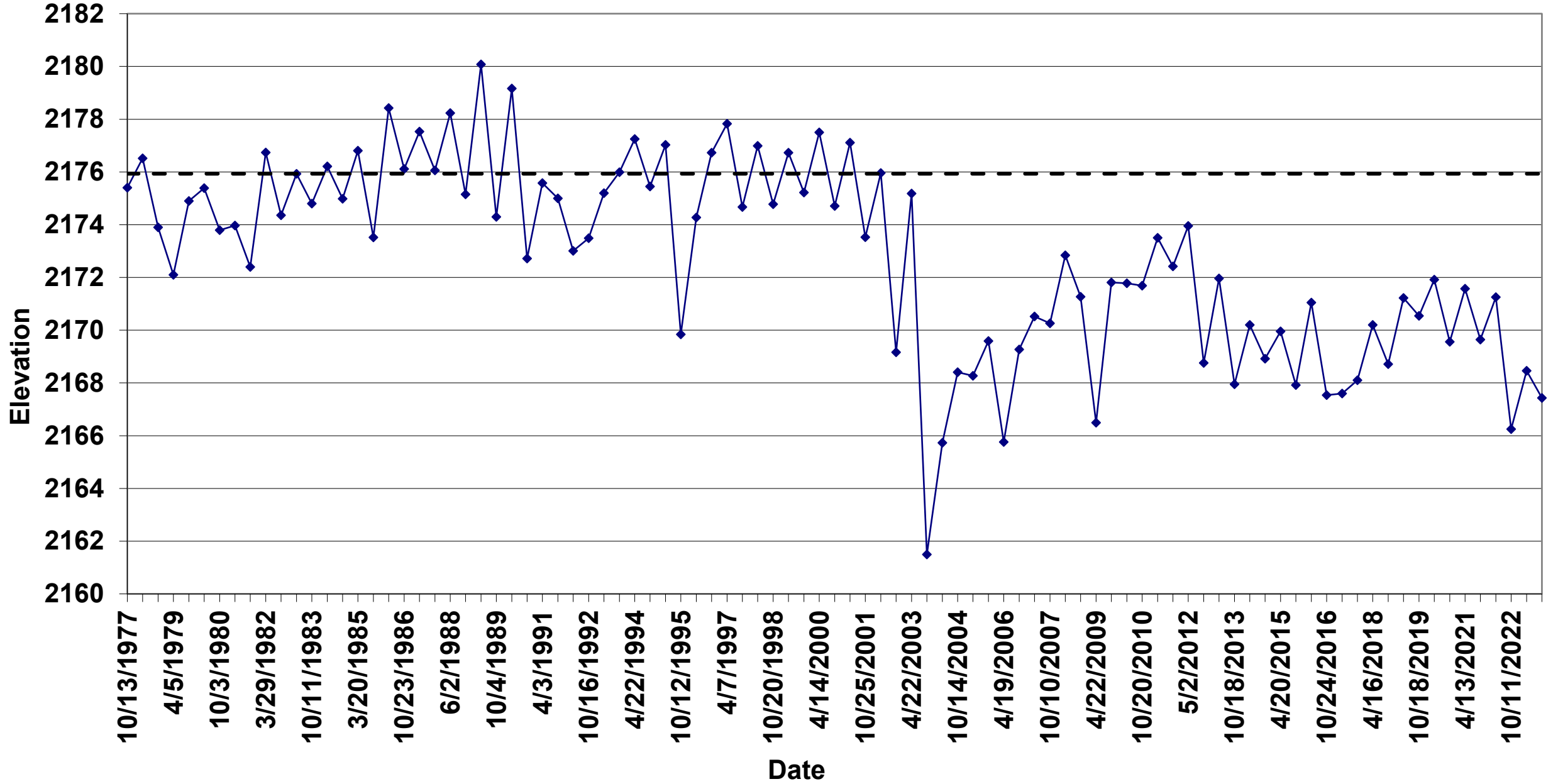


Nolan Little
January 2019
Tri-Basin Natural Resources District



Surface Elevation
2337.60'

SESW 34-5N-22W / G-36

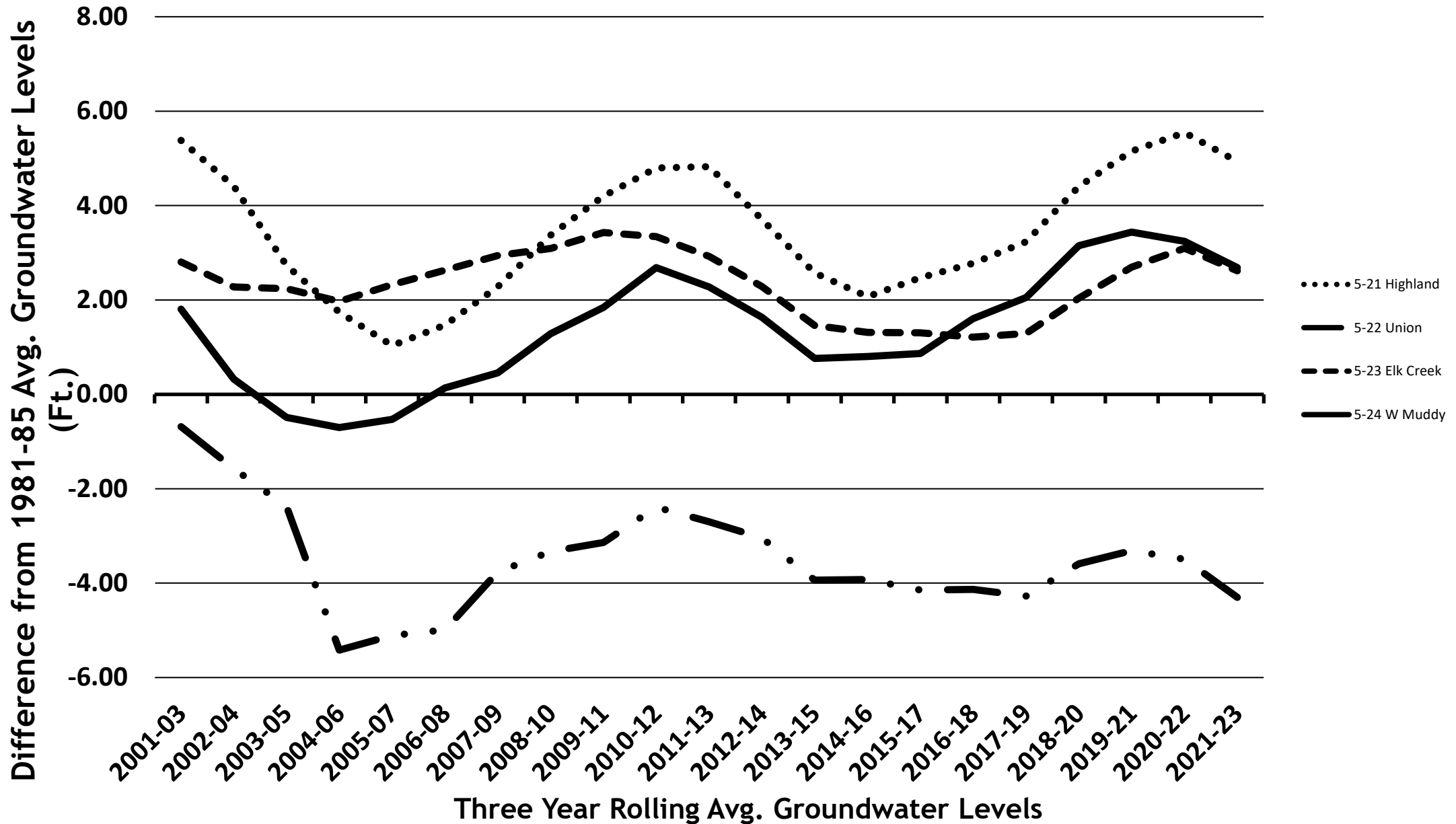


SOUTHERN GOSPER COUNTY

	2023 Rolling Average	Change from 2022
• Highland (5-21)	4.93'	-0.61'
• Union (5-22)	-4.30'	-0.80'
• Elk Creek (5-23)	2.62'	-0.48'
• West Muddy (5-24)	2.69'	-0.55'

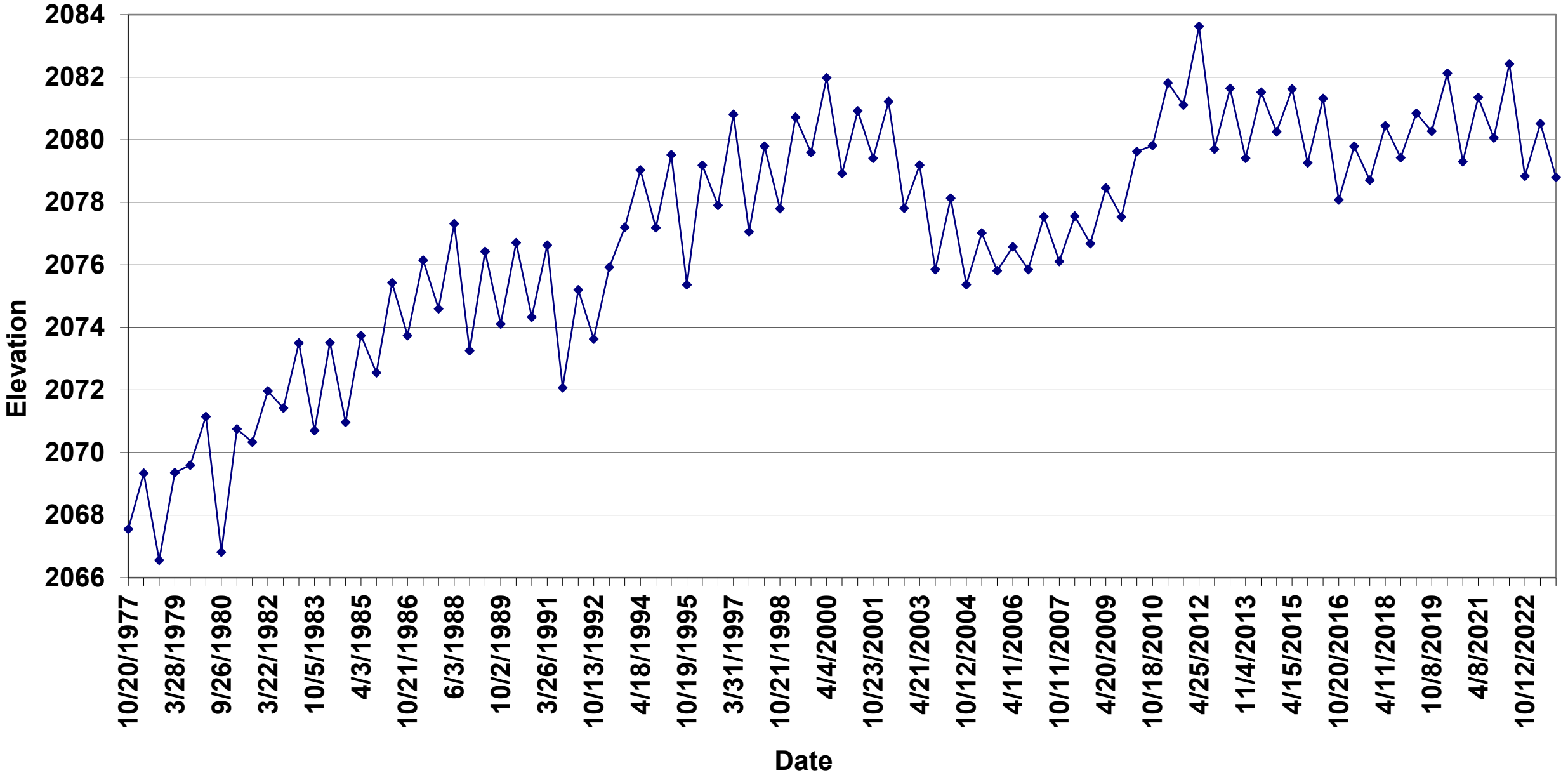
Tri-Basin NRD

Southern Gosper County Water Level Changes

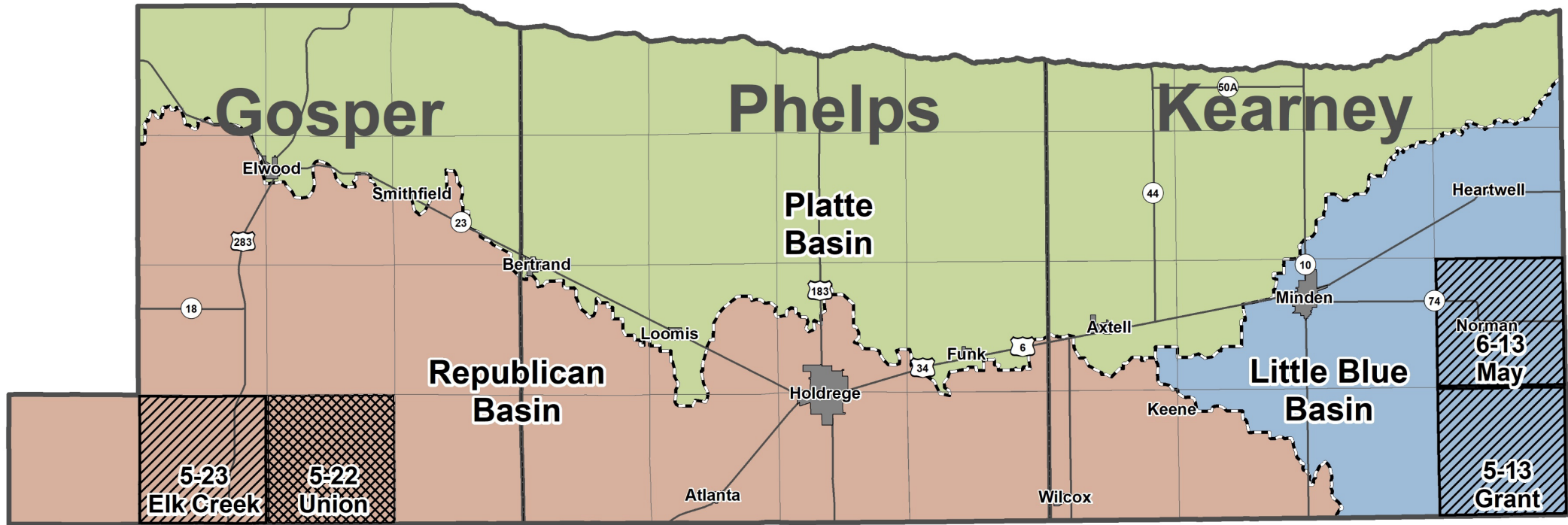


Surface Elevation
2217.00'

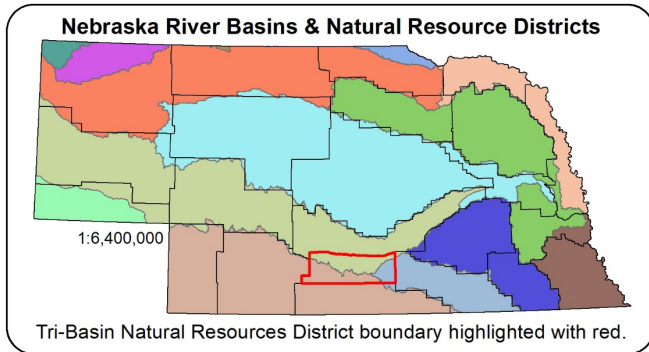
NWNW 35-5N-16W / K-29



Tri-Basin Natural Resources District Groundwater Quantity Management

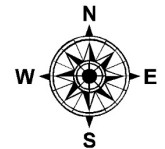


Scale = 1:290,000



Designation		River Basin		Community	
	Phase II		Republican		Community
	Phase III		Little Blue		Highway
			Platte		County
					Township

*The entire district is regulated under Phase I regulations.

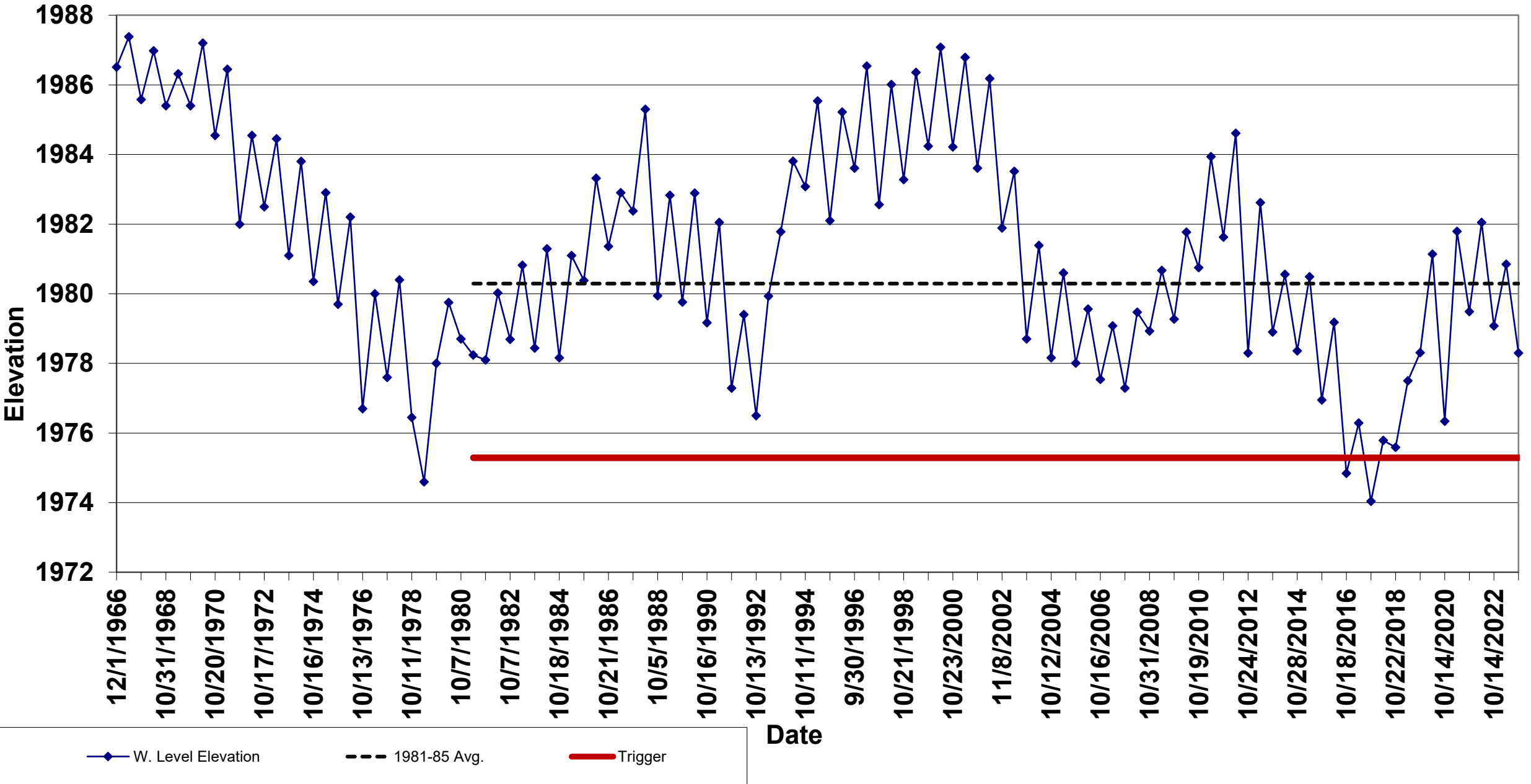


Nolan Little
January 2019
Tri-Basin Natural Resources District



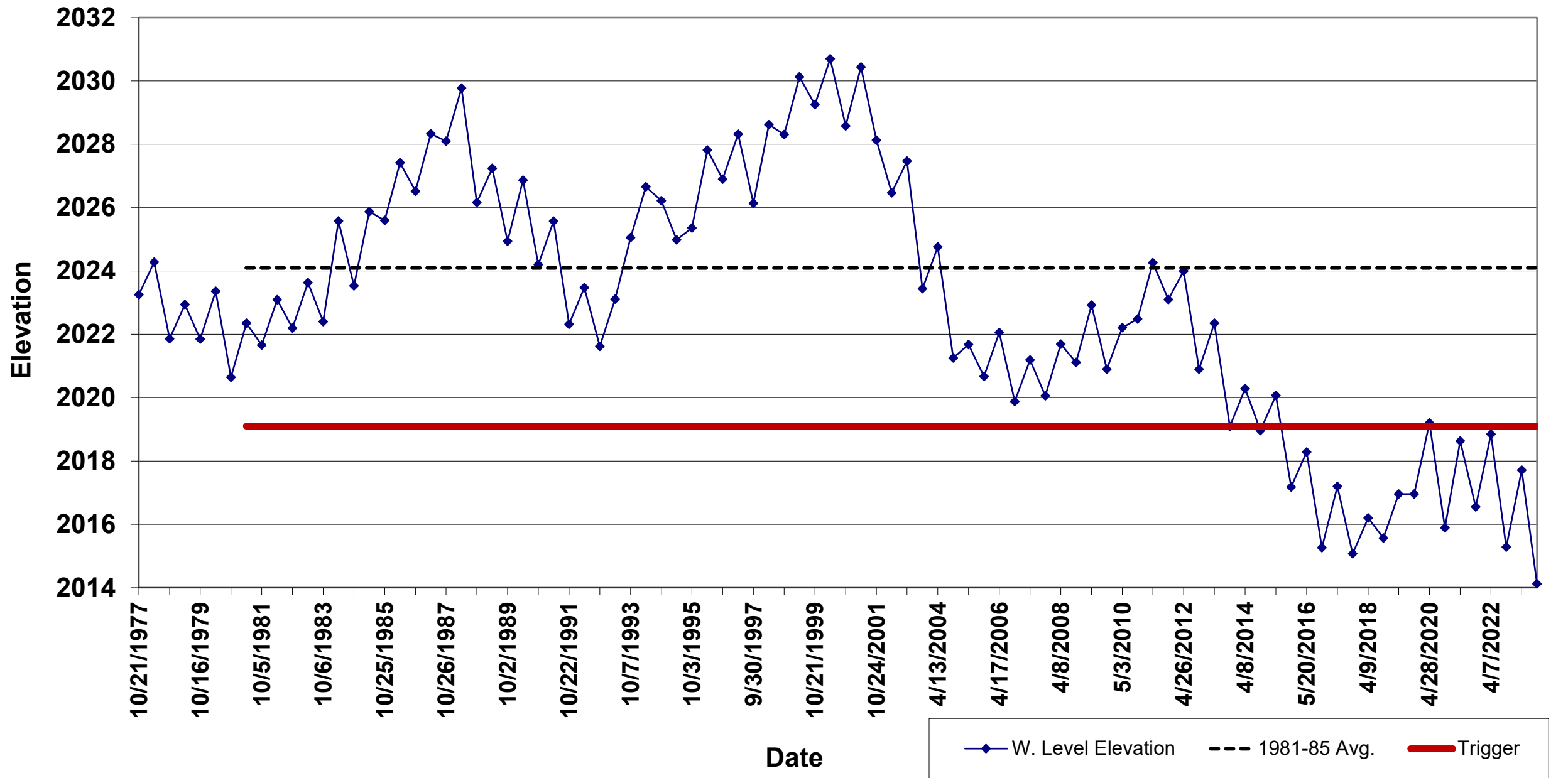
Surface Elevation
2102.40'

SWNW 21-5N-13W / K-30



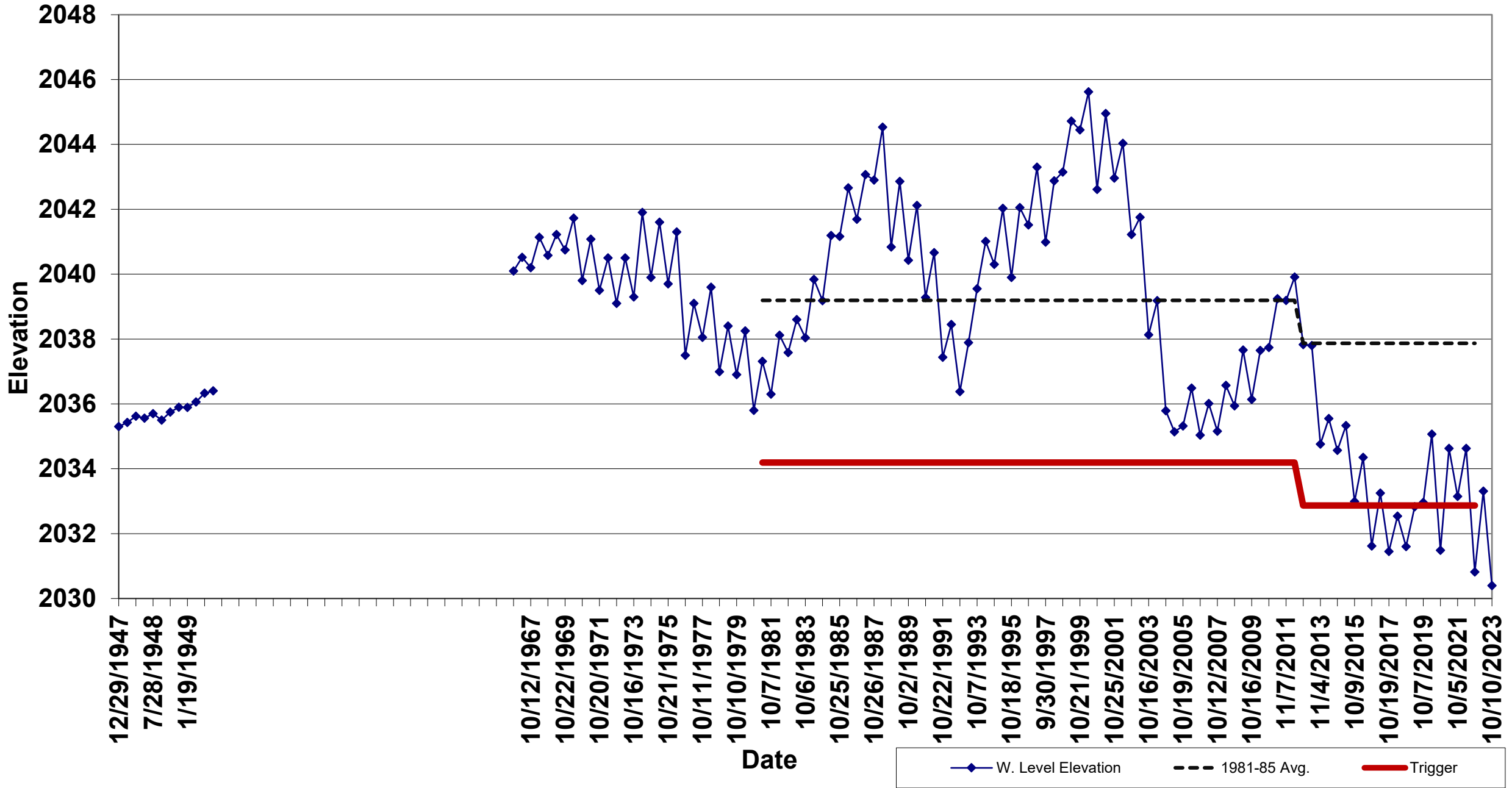
Surface Elevation
2065.80'

SESE 06-6N-13W / K-14



Surface Elevation
2100.70'

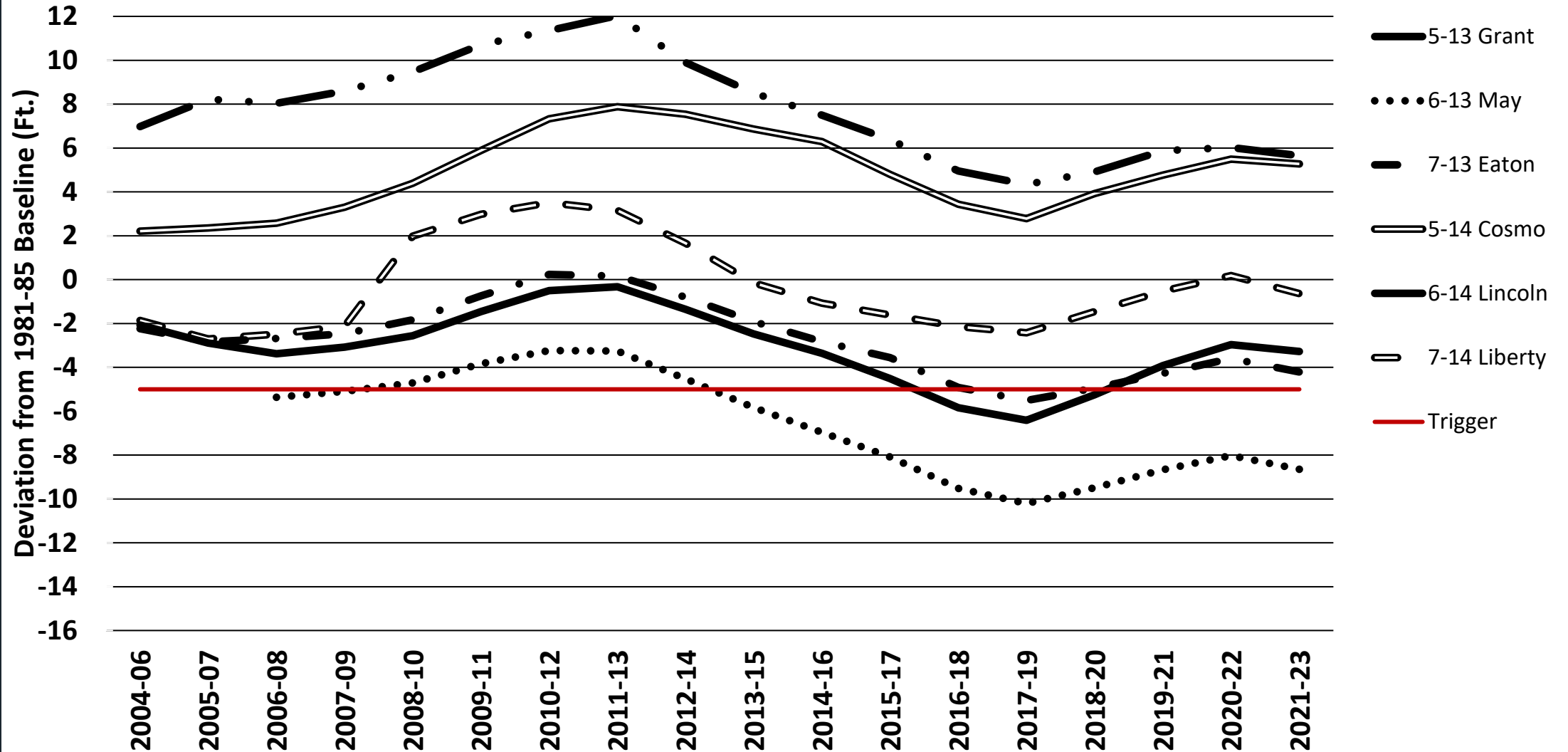
SWSE 19-7N-13W / K-33X



EASTERN KEARNEY COUNTY

	2023 Rolling Average	Change from 2022
• Grant (5-13)	-3.27'	-0.30'
• May (6-13)	-8.64'	-0.61'
• Eaton (7-13)	-4.20'	-0.60'
• Cosmo (5-14)	5.27'	-0.22'
• Lincoln (6-14)	5.65'	-0.38'
• Liberty (7-14)	-0.63'	-0.82'

Tri-Basin NRD Eastern Kearney County Groundwater Levels



EASTERN KEARNEY COUNTY

	2023 Rolling Average	Phase III Trigger
• Grant (5-13)	-3.27'	-10.3'
• May (6-13)	-8.64'	-13.9'
• Eaton (7-13)	-4.20'	-12.9'
• Cosmo (5-14)	5.27'	-10.9'
• Lincoln (6-14)	5.65'	-10.8'
• Liberty (7-14)	-0.63'	-13.8'

ANNUAL CHANGE (SPRING 2022 – SPRING 2023)

- Platte Basin: -1.34'
- Republican Basin: -0.82'
- Little Blue Basin: -1.31'
- District Average: -1.13'

COST-SHARE SOIL MOISTURE SENSORS

Tri-Basin NRD

Republican Basin

1723 Burlington

Holdrege, NE 68949

308-995-6688

1-877-995-6688