

An aerial photograph of a coastal water body, likely a bay or estuary, featuring a large, prominent sandbar that divides the water into several sections. The water is a deep blue-green color, and the sandbar is a light tan color. In the foreground, a paved road runs horizontally across the bottom of the frame. The sky is a clear, pale blue.

CNPPID

# Water Supply Update

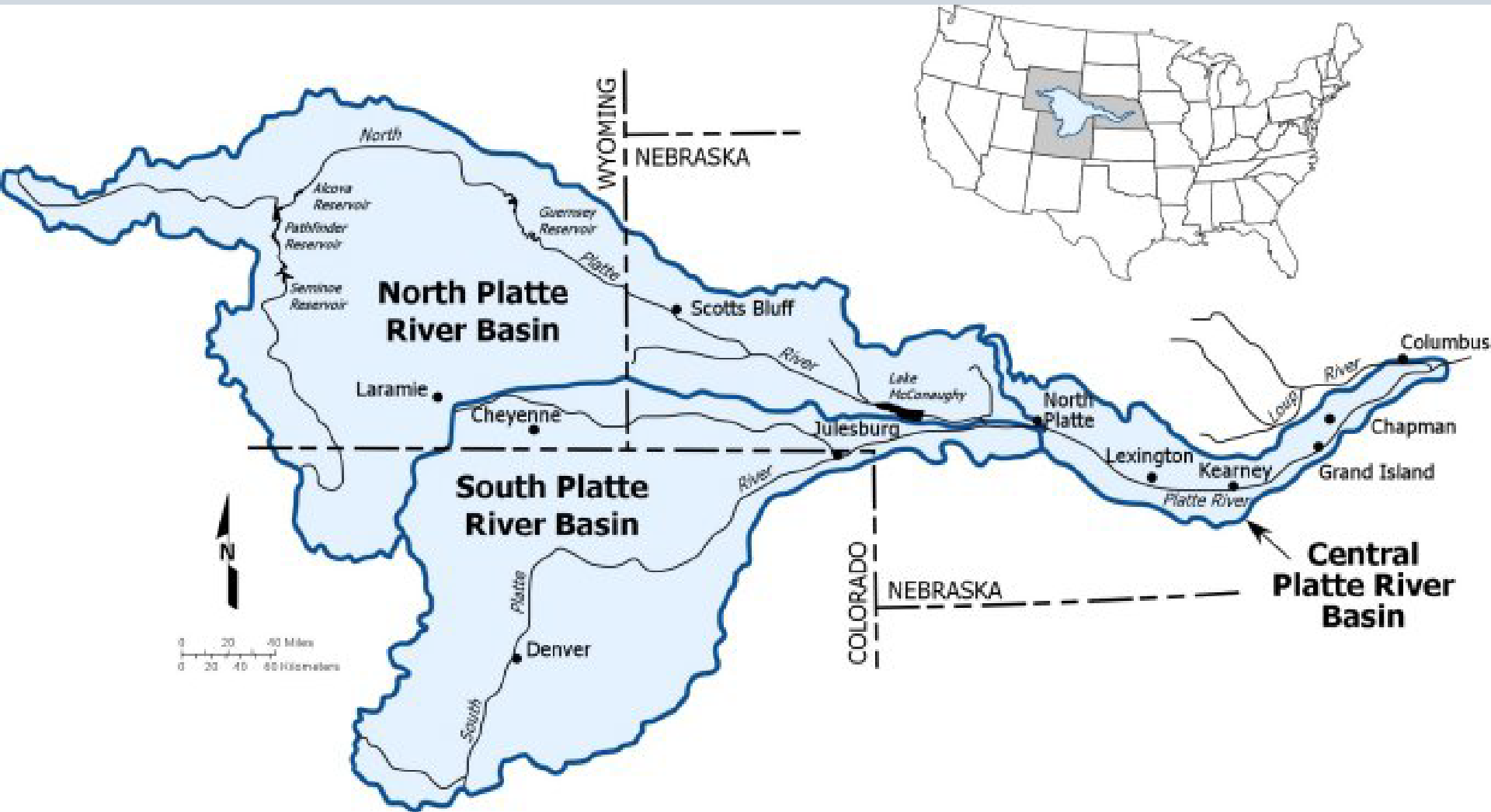
February 1, 2024

# Outline

---

- Basin Map
- North Platte Basin
  - Snowpack
  - Reservoir Conditions
- South Platte Basin
  - Snowpack
  - Reservoir Conditions
  - SP River @ NP
- Lake McConaughy
  - Inflows
  - Storage

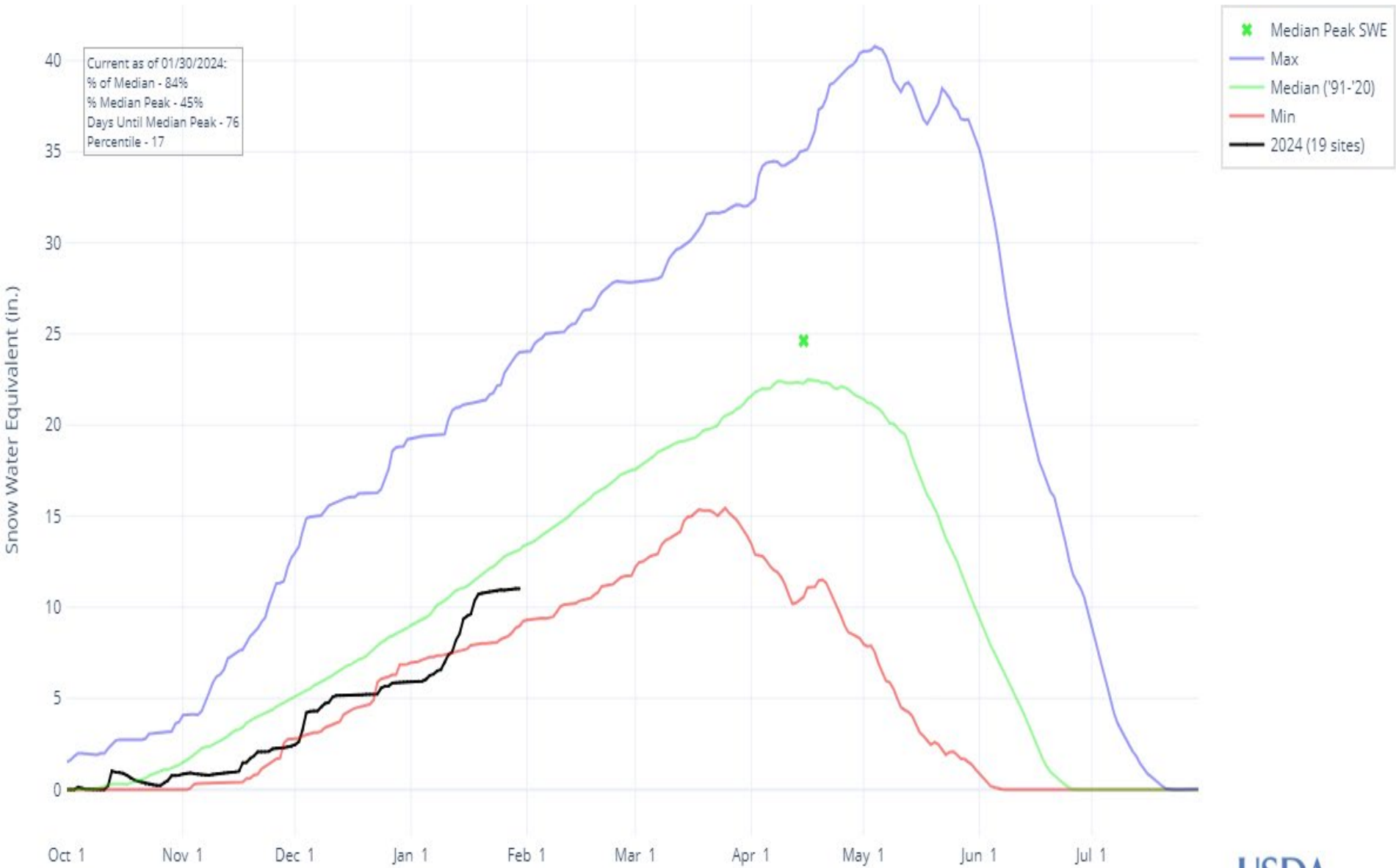
# Platte River Basin Map



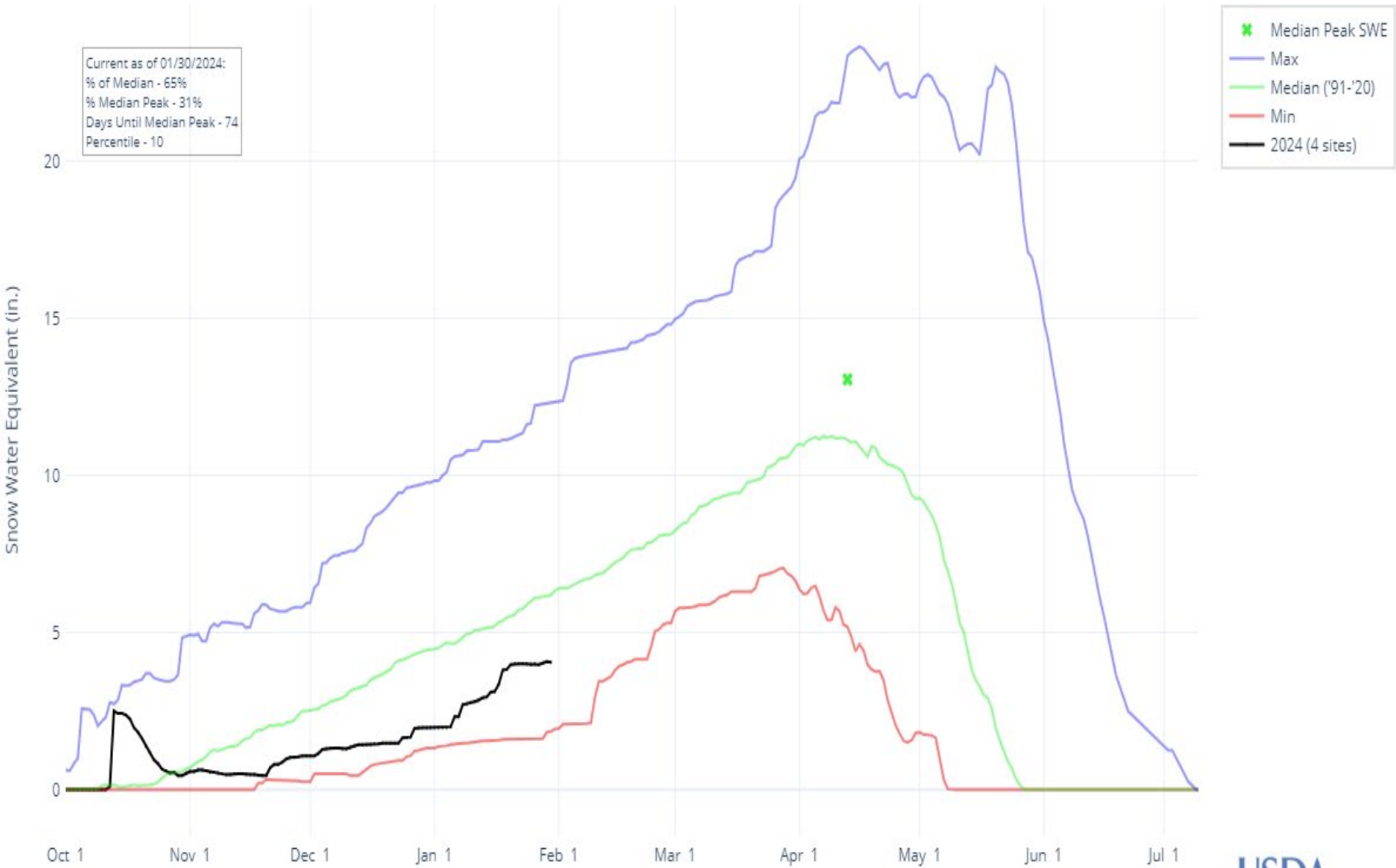
# North Platte Basin

---

# SNOW WATER EQUIVALENT IN UPPER NORTH PLATTE



# SNOW WATER EQUIVALENT IN LOWER NORTH PLATTE



SIWY  
892 cfs

MBWY  
61 cfs

SEMINOLE RESERVOIR (SEMR)  
Top 1017273 af, 6357.0 ft  
Current 630760 af, 6334.7 ft  
To fill 378513 af, 22.3 ft  
Computed Inflow 542 cfs

SWWY  
59 cfs

KORTES RESERVOIR (KORR)  
Top 4739 af, 6142.0 ft  
Current 4725 af, 6141.8 ft  
To fill 14 af, 0.2 ft  
Computed Inflow 534 cfs  
Total Outflow 534 cfs

PATHFINDER RESERVOIR (PATR)  
Top 1070000 af, 5852.5 ft  
Current 705850 af, 5834.2 ft  
To fill 364141 af, 18.3 ft  
Computed Inflow 681 cfs

CAWY  
0 cfs

PAWY  
77 cfs

ALCOVA RESERVOIR (ALCR)  
Top 184405 af, 5500.0 ft  
Current 157351 af, 5488.6 ft  
To fill 27054 af, 11.4 ft  
Computed Inflow 501 cfs

GRAY REEF RESERVOIR (GRAR)  
Top 1800 af, 5332.0 ft  
Current 1371 af, 5329.4 ft  
To fill 429 af, 2.6 ft  
Computed Inflow 488 cfs  
Total Outflow 497 cfs

ORWY  
790 cfs

GLENDO RESERVOIR (GLER)  
Top 492022 af, 4635.0 ft  
Current 282692 af, 4615.1 ft  
To fill 199330 af, 19.9 ft  
Computed Inflow 790 cfs  
Total Outflow 30 cfs

GUERNSEY RESERVOIR (GUER)  
Top 45612 af, 4420.0 ft  
Current 14845 af, 4404.2 ft  
To fill 30767 af, 15.8 ft  
Computed Inflow 66 cfs  
Total Outflow 2 cfs

ICWY  
0 cfs

WHWY  
6 cfs

FCWY  
0 cfs

- 1,000,248 af to fill North Platte System
- 30-Year Average Total System Inflow 1,329,200 af
- Spill Possible but not projected in Bureau's "Most Probable Inflow Estimate"

NORTH PLATTE RIVER BASIN  
Data as of 01/30/2024

# North Platte Basin Reservoir Storage

Upper North Platte		Current (KAF)	Last Year (KAF)	Median (KAF)	Capacity (KAF)	Current % Capacity	Last Year % Capacity	Median % Capacity	Current % Median	Last Year % Median
Seminole		649.3	453.4	613.2	1016.7	64%	45%	60%	106%	74%
Pathfinder		700.1	341.2	555.1	1016.5	69%	34%	55%	126%	61%
<b>Basin Index</b>						<b>66%</b>	<b>39%</b>	<b>57%</b>	<b>116%</b>	<b>68%</b>
# of reservoirs						2	2	2	2	2

591,700 AF more than last year

Laramie		Current (KAF)	Last Year (KAF)	Median (KAF)	Capacity (KAF)	Current % Capacity	Last Year % Capacity	Median % Capacity	Current % Median	Last Year % Median
Wheatland #2				45.8	98.9			46%		
<b>Basin Index</b>								<b>46%</b>		
# of reservoirs						0	0	1	0	0

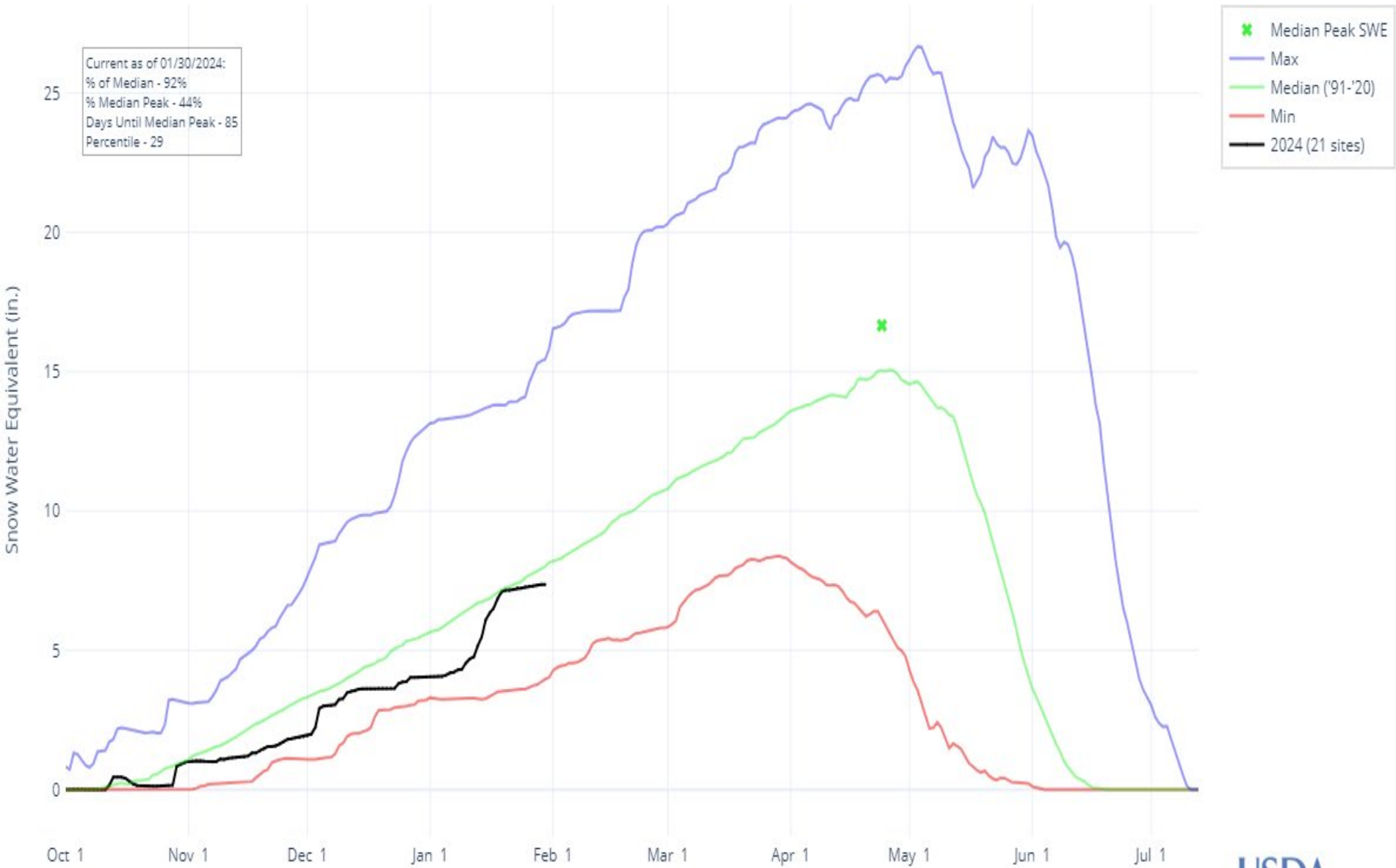
Lower North Platte		Current (KAF)	Last Year (KAF)	Median (KAF)	Capacity (KAF)	Current % Capacity	Last Year % Capacity	Median % Capacity	Current % Median	Last Year % Median
Alcova		157.3	157.5	156.5	184.3	85%	85%	85%	101%	101%
Guernsey		12.2	11.2	11.5	45.6	27%	25%	25%	106%	97%
Glendo		258.0	221.9	243.4	506.4	51%	44%	48%	106%	91%
<b>Basin Index</b>						<b>58%</b>	<b>53%</b>	<b>56%</b>	<b>104%</b>	<b>95%</b>
# of reservoirs						3	3	3	3	3



# South Platte Basin

---

# SNOW WATER EQUIVALENT IN SOUTH PLATTE



# South Platte Basin Reservoir Storage

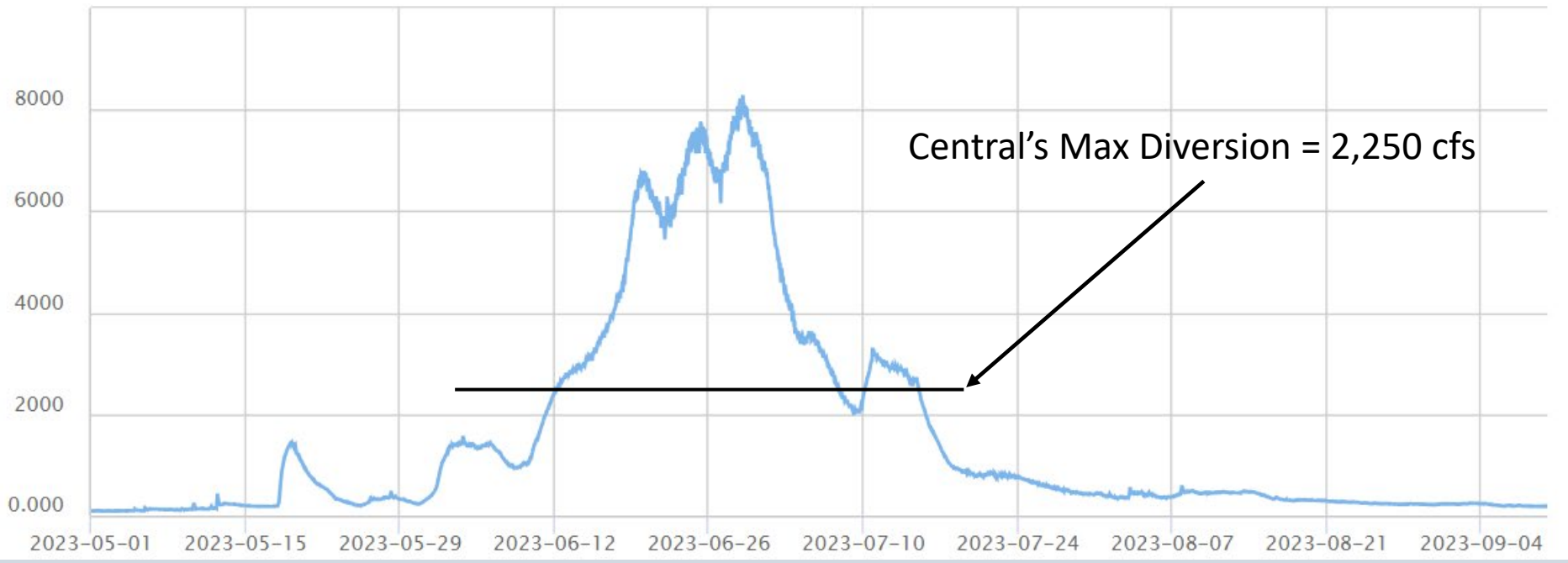
South Platte	Current (KAF)	Last Year (KAF)	Median (KAF)	Capacity (KAF)	Current % Capacity	Last Year % Capacity	Median % Capacity	Current % Median	Last Year % Median
Antero Reservoir	20.1	20.0	19.6	20.1	100%	100%	97%	102%	102%
Barr Lake	20.5	15.3	22.8	30.1	68%	51%	76%	90%	67%
Black Hollow Reservoir	3.6	4.6	3.0	6.5	56%	71%	46%	121%	155%
Boyd Lake	39.4	21.7	30.2	48.4	81%	45%	62%	131%	72%
Cache La Poudre	6.5	1.8	6.0	10.1	64%	18%	59%	108%	31%
Carter Lake	82.7	50.5	59.7	108.9	76%	46%	55%	139%	85%
Chambers Lake	4.8	4.5	3.6	8.8	55%	51%	41%	134%	125%
Cheesman Lake	73.2	71.2	66.8	79.0	93%	90%	85%	110%	107%
Cobb Lake	19.3	14.9	14.4	22.3	86%	67%	65%	134%	103%
Elevenmile Canyon Reservoir	99.3	100.0	99.5	98.0	101%	102%	102%	100%	100%
Empire Reservoir	21.2	20.9	22.6	36.5	58%	57%	62%	94%	93%
Fossil Creek Reservoir	9.3	6.5	7.8	11.1	84%	58%	70%	119%	83%
Gross Reservoir	15.7	22.2	18.6	29.8	53%	75%	62%	84%	120%
Halligan Reservoir	3.6	4.9	3.8	6.4	57%	76%	59%	96%	128%
Horsecreek Reservoir	3.7	2.4	8.1	14.7	25%	16%	55%	46%	30%
Horsetooth Reservoir	102.1	70.6	92.8	149.7	68%	47%	62%	110%	76%
Jackson Lake Reservoir	24.6	18.5	21.2	26.1	94%	71%	81%	116%	87%
Julesburg Reservoir	16.1	15.2	16.6	20.5	79%	74%	81%	97%	91%
Lake Loveland Reservoir	7.9	2.3	7.3	10.3	77%	23%	71%	109%	32%
Lone Tree Reservoir	7.0	2.4	6.0	8.7	80%	27%	69%	116%	40%
Mariano Reservoir	4.0	3.5	3.3	5.4	74%	64%	61%	121%	105%
Marshall Reservoir	6.3	5.5	5.6	10.0	63%	55%	56%	112%	98%
Marston Reservoir	10.2	14.1	8.6	13.0	78%	108%	66%	118%	164%
Milton Reservoir	14.4	6.5	16.7	23.5	61%	28%	71%	86%	39%
Point Of Rocks Reservoir	69.2	29.3	46.5	70.6	98%	41%	66%	149%	63%
Prewitt Reservoir	28.3	8.2	15.8	28.2	100%	29%	56%	179%	52%
Ralph Price Reservoir		151.4	14.8	16.2		934%	91%		1023%
Riverside Reservoir	55.7	25.8	40.5	55.8	100%	46%	73%	137%	64%
Spinney Mountain Reservoir	37.2	20.5	33.6	49.0	76%	42%	69%	111%	61%
Standley Reservoir	37.8	39.0	37.1	42.0	90%	93%	88%	102%	105%
Terry Reservoir	6.1	6.4	5.5	8.0	76%	79%	69%	110%	116%
Union Reservoir	9.7	10.7	10.6	13.0	74%	82%	82%	91%	101%
Windsor Reservoir	11.0	12.0	11.9	15.2	72%	79%	78%	92%	101%
<b>Basin Index</b>					<b>81%</b>	<b>73%</b>	<b>71%</b>	<b>114%</b>	<b>103%</b>
# of reservoirs					32	33	33	32	33

# South Platte River at North Platte

Search for a Location: 06765500 - South Platte River at North Platte Select a Data Set: Discharge.Working@06765500

Date: 2023-05-01 - 2023-09-10

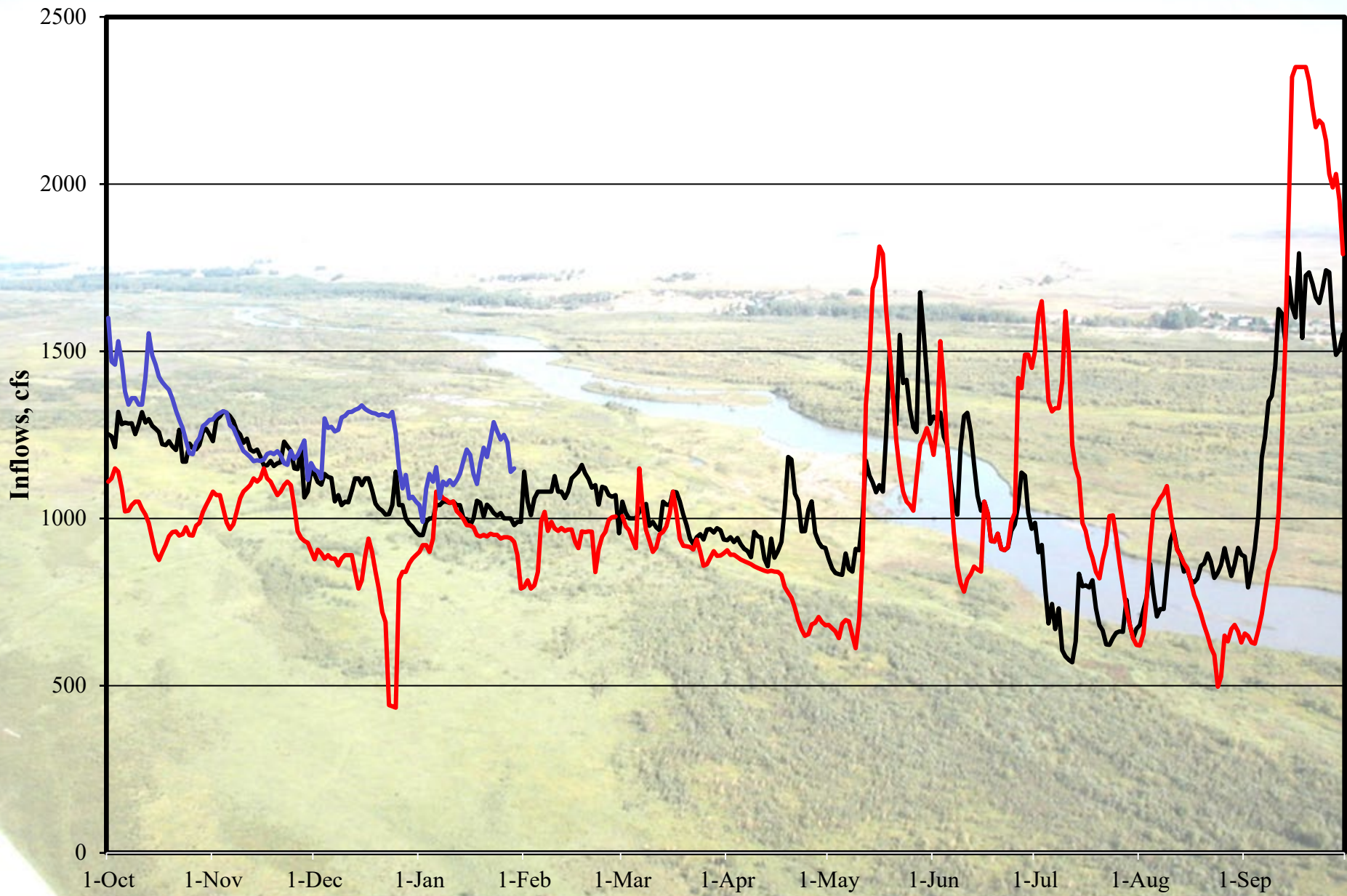
- Summary
- Chart
- Grid
- Statistics
- Alerts
- Export
- Reports
- Go To Map



# Lake McConaughy

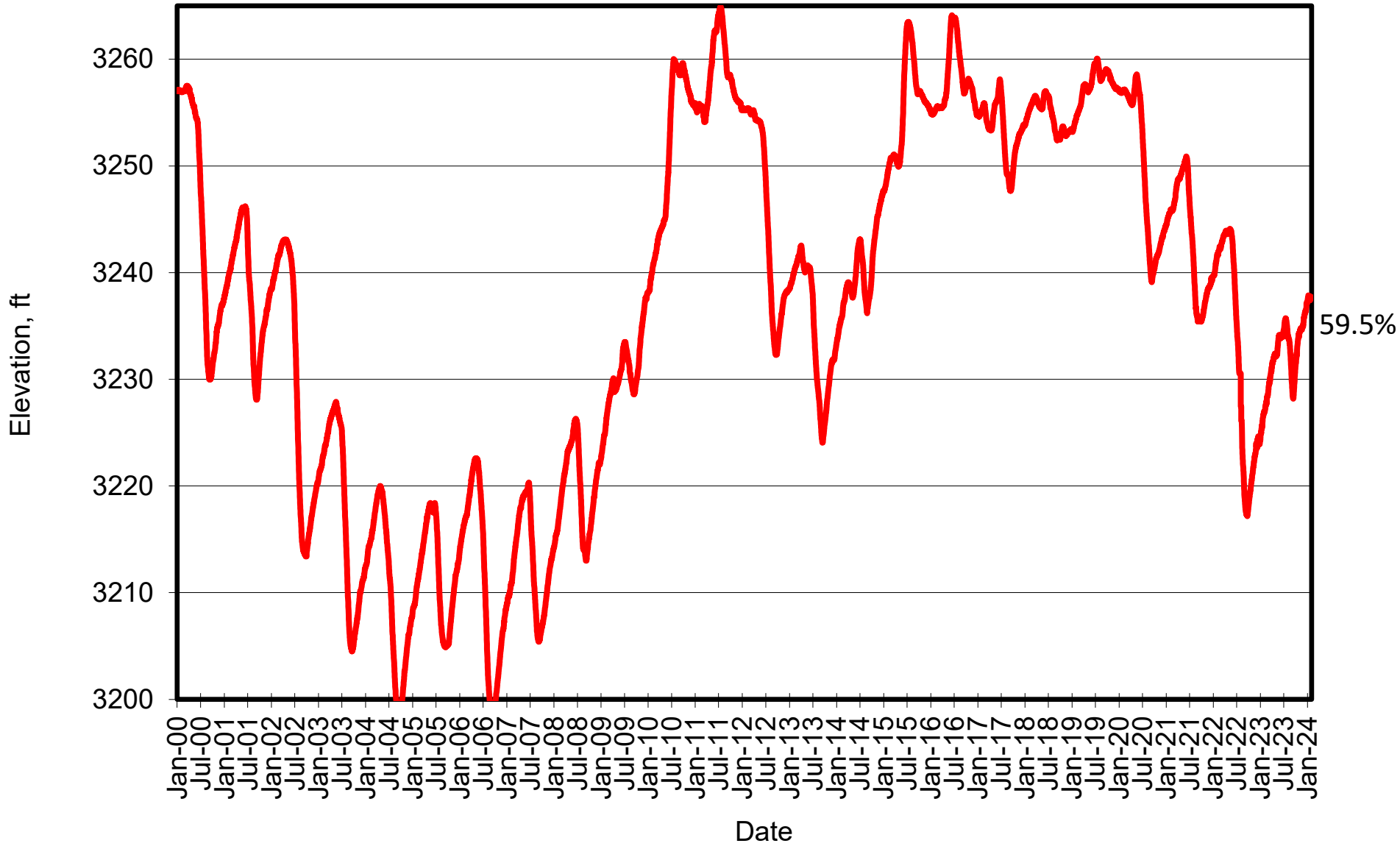


# Lake McConaughy Inflows



— Median (2007-2023)    — 2023 WY    — 2024 WY

# Lake McConaughy Elevation



# Takeaways

---

## ➤ North Platte Basin

- Well below normal snowpack but still early
- Well above average reservoir storage
- Spill from Wyoming not projected but possible

## ➤ South Platte Basin

- Below normal snowpack
- Well above average reservoir storage
- We could see good flows from South Platte again this summer

## ➤ Lake McConaughy

- Above average inflows and much better than last year
- 2023 irrigation drawdown only 7 ft. (2022 was nearly 30 ft)
- 59.5% of capacity



---

# Questions?