

**AGENDA AND MEETING NOTICE**  
**Tri-Basin Natural Resources District**  
**Wednesday, September 17, 2025 at 1:30 PM**  
**Tri-Basin NRD Office**

**1723 Burlington St., Holdrege NE**

**\*\*\* Public Hearing on TBNRD FY 2025-26 levy \*\*\***

- |             |            |  |  |
|-------------|------------|--|--|
| (1)         | <b>1.</b>  | <b>Call the Meeting to Order – Chairman</b> (Public Meeting Law posting notice)  |  |
| (1)         | <b>2.</b>  | <b>Roll Call – NRD Board of Directors</b>  |  |
| (3)         | <b>3.</b>  | <b>Excuse Absences</b>   |  |
|             | <b>4.</b>  | <b>Approve Meeting Agenda</b>  |  |
| (5)         | <b>5.</b>  | <b>Approve minutes</b>   |  |
|             |            | <b>A.</b>  | August 20, 2025 Board meeting & Hearing              |
|             |            | <b>B.</b>  | August 20, 2025 Work Session Mtg.                    |
| (5)         | <b>6.</b>  | <b>Financial Report – Treasurer</b>  |  |
|             |            | <b>A.</b>  | Review and Action on Expenses                        |
|             |            | <b>B.</b>  | Special Bills-(Visa, attorney)                       |
| (10)        | <b>7.</b>  | <b>Natural Resources Conservation Service (report enclosed)</b>  |  |
|             |            | <b>A.</b>  | FSA Farm Plans                                       |
|             |            | <b>B.</b>  | Activity and progress report                         |
| (10)        | <b>8.</b>  | <b>Cost-share Report</b>   |  |
|             |            | <b>A.</b>  | Well Decommissioning Applications                    |
|             |            | <b>B.</b>  | NSWCP, NRD, NE WILD, WCIP, buffer strips             |
| (10)        | <b>9.</b>  | <b>Groundwater Management</b>  |  |
|             |            | <b>A.</b>  | Groundwater and Cert. Acres transfers                |
|             |            | <b>B.</b>  | New well variances                                   |
|             |            | <b>C.</b>  | Certification correction requests                    |
|             |            | <b>D.</b>  | BELF Land leases                                     |
| (5)<br>2:20 | <b>10.</b> | <b>Other Business – Opportunity for public to introduce non-agenda items for comments and/or discussion</b> (Guests are asked to limit their comments to five minutes unless prior arrangements have been made with the NRD office). |  |
| (10)        | <b>11.</b> | <b>Unfinished Business</b>   |  |
|             |            | <b>A.</b>  | Approve FY 2025-26 Property Tax Levy (after hearing) |
|             |            | <b>B.</b>  |  |
|             |            | <b>C.</b>  |  |
|             |            | <b>D.</b>  |  |
| (10)        | <b>12.</b> | <b>NARD Report</b>   |  |
|             |            | <b>A.</b>  | NARD Fall Conference, Sept. 29-30                    |
|             |            | <b>B.</b>  |  |
| (5)         | <b>13.</b> | <b>Committee Reports</b>   |  |
|             |            | <b>A.</b>  |  |
|             |            | <b>B.</b>  |  |
| (5)         | <b>14.</b> | <b>Staff Reports &amp; Necessary Action</b>  |  |
|             |            | <b>A.</b>  | Board Directives to Staff                            |
|             |            | <b>B.</b>  | Out-of-state travel approval                         |
| (10)        | <b>15.</b> | <b>Monthly Reports</b>   |  |
|             |            | <b>A.</b>  | Republican Basin                                     |
|             |            | <b>F.</b>  | Sacramento Creek                                     |
|             |            | <b>K.</b>  | Middle Lost Creek                                    |
|             |            | <b>B.</b>  | Platte Basin   |
|             |            | <b>G.</b>  | Fort Kearny  |
|             |            | <b>L.</b>  | CoHyst/Platte Basin Coalition                        |
|             |            | <b>C.</b>  | Sand Creek/Little Blue Basin                         |
|             |            | <b>H.</b>  | Fort Kearny-West                                     |
|             |            | <b>M.</b>  | Rainwater Basin JV                                   |
|             |            | <b>D.</b>  | North Dry Creek                                      |
|             |            | <b>I.</b>  | South Dry Creek                                      |
|             |            | <b>N.</b>  | Platte-Republican Diversion                          |
|             |            | <b>E.</b>  | Odessa   |
|             |            | <b>J.</b>  | Whiskey Slough                                       |
|             |            | <b>O.</b>  | CNPPID   |
| (10)        | <b>16.</b> | <b>New Business</b>  |  |
|             |            | <b>A.</b>  | Select Three Platte Basin Stakeholders               |
|             |            | <b>B.</b>  | Select new Newspaper of Record                       |
|             |            | <b>C.</b>  |  |
| (15)        | <b>17.</b> | <b>Personnel and legal matters (Executive session)</b>   |  |
| (5)         | <b>18.</b> | <b>Concerns &amp; Comments</b>   |  |
| 3:30        | <b>19.</b> | Next Board Mtg., <b>Wednesday, October 15, 2024-1:30 PM, Tri-Basin NRD office</b>  |  |
|             | <b>20.</b> | Adjourn  |  |

\*Individuals needing special accommodations to participate in the meeting's activities or who wish to speak to the board for more than five minutes on a subject should notify the Tri-Basin NRD Office at (877) 995-6688 at least three days in advance.

**September**

- |               |   |
|---------------|---|
| <b>1</b>      | Labor Day (banks, government offices closed)            |
| <b>9-11</b>   | Husker Harvest Days, Alda NE                            |
| <b>18</b>     | Rainwater Basin Conservation Day, Sacramento WMA        |
| <b>29, 30</b> | NARD Fall Conference, Younes Conference Center, Kearney |

**MINUTES OF THE TRI-BASIN NRD BOARD MEETING**  
**Thursday, August 20, 2025, 10:30 a.m.**  
**Younes Conference Center- South**  
**Kearney, NE**

The regular monthly board meeting of the Tri-Basin Natural Resources District (NRD) was called to order by Chairman, Todd Garrelts at 10:30 a.m. Garrelts noted Public Meeting Law was posted in the meeting room.

**ROLL CALL**

Roll call was taken with directors present: Bilka, Garrelts, Grams, Grimes, Hinrichs, Lundeen, Philips, Reynolds, and Ryan.

Notice of the meeting was published in the Holdrege Citizen, Valley Voice and Minden Courier and announced on radio station KRVN, Lexington.

**EXCUSED ABSENCES**

No absences to excuse

**MEETING AGENDA**

Moved by Bilka, seconded by Grimes to accept the meeting agenda for the August 20, 2025 Board Meeting. Motion carried

AYE: Bilka, Garrelts, Grams, Grimes, Harris, Hinrichs, Lundeen, Reynolds, Ryan

NAY:

ABSTAIN:

ABSENT: Bergstrom, Harris, Philips, Raffety

**MINUTES**

Thorburn presented the minutes of July 16, 2025, Board of Directors meeting.

Moved by Reynolds seconded by Bilka, to approve the minutes for the July 16, 2025, Regular Board of Directors meeting. Motion carried.

AYE: Bilka, Garrelts, Grams, Grimes, Hinrichs, Lundeen, Reynolds

NAY:

ABSTAIN: Ryan

ABSENT: Bergstrom, Harris, Philips, Raffety

**FINANCIAL REPORT:**

Thorburn presented the financial report for the month of July 2025 as follows:

Accrual Expenditures for Month .....	\$289,022.49
Accrual Revenues for Month.....	\$44,972.62
Actual Expenditures for Month .....	\$293,587.35
Actual Revenues for Month.....	\$50,682.99
Main Checking- July 31, 2025.....	\$338,223.60
Accounts Receivable – July 31, 2025.....	\$43,396.21
CD/Sinking Funds – Bruning Bank – July 31, 2025.....	\$161,966.21
Building Sinking Fund – July 31, 2025.....	\$3,957.87
Vehicle Sinking Fund – July 31, 2025.....	\$56,378.62
Water Resources Fund – July 31, 2025.....	\$10,176.52
Whiskey Slough IPA Balance – July 31, 2025.....	\$7,077.77
Fort Kearny-West IPA Balance – July 31, 2025.....	\$11,013.47
South Dry Creek IPA Balance – July 31, 2025.....	\$11,013.47
Fort Kearny IPA Balance – July 31, 2025.....	\$10,808.02
Sacramento Creek IPA Balance – July 31, 2025.....	\$7,161.70
North Dry Creek IPA Balance – July 31, 2025.....	\$10,004.01
Water Jamboree – July 31, 2025.....	\$5,899.98

TRI-BASIN NRD BOARD MINUTES

August 20, 2025

Page Two

Odessa IPA – July 31, 2025-----	\$20,774.51
Sacramento Creek IPA Loan Balance – July 31, 2025-----	\$0

Moved by Grams, seconded by Reynolds to accept the July 2025 Financial Report, subject to review of North Dry Creek IPA account and Accounts Receivables and submit for audit. Motion carried.

AYE: Bilka, Garrelts, Grams, Grimes, Harris, Hinrichs, Lundeen, Philips, Reynolds, Ryan

NAY:

ABSTAIN:

ABSENT: Bergstrom, Harris, Raffety

**SPECIAL BILLS**

Thorburn presented the VISA and attorney bills for approval.

Moved by Bilka, seconded by Grimes, to approve the Visa and attorney bills. Motion carried.

AYE: Bilka, Garrelts, Grams, Grimes, Harris, Hinrichs, Lundeen, Philips, Reynolds, Ryan

NAY:

ABSTAIN:

ABSENT: Bergstrom, Harris, Raffety

**NRCS REPORT**

**FSA Farm Plans:** There were no plans to approve.

**Activity and Progress Report:** Cammie Kerner reported they have 240 contracts they will certify payments on and that will happen in November. They are waiting on a new farm bill to be introduced. Tami finished her last treatment. Mike and Ruth's daughter was in a car accident and is in Kansas City.

**COST SHARE REPORT**

**Well Decommissioning** – Thorburn presented one Well Decommissioning cost-share application for approval.

Moved by Ryan, seconded by Grams, to approve one Well Decommissioning cost-share application for approval. Motion carried.

AYE: Bilka, Garrelts, Grams, Grimes, Harris, Hinrichs, Lundeen, Philips Reynolds, Ryan

NAY:

ABSTAIN:

ABSENT: Bergstrom, Harris, , Raffety

**NSWCP & NRD Applications** – Thorburn presented one NSWCP Flow Meter application for approval.

Moved by Bilka, seconded by Grimes, to approve one NSWCP Flow Meter application for approval. Motion carried.

AYE: Bilka, Garrelts, Grams, Grimes, Harris, Hinrichs, Lundeen, Philips, Reynolds, Ryan

NAY:

ABSTAIN:

ABSENT: Bergstrom, Harris, Raffety

**GROUNDWATER MANAGEMENT**

Nothing to report

**Educational Land Leases** – There were no Educational Lands and Funds applications for approval.

**OTHER BUSINESS**

## TRI-BASIN NRD BOARD MINUTES

August 20, 2025

Page Three

The public was given the opportunity to bring other specific business or non-agenda items before the board for comment or discussion.

### **UNFINISHED BUSINESS**

Thorburn presented the FY 2025-26 Budget for approval.

Moved by Bilka, seconded by Ryan, to approve the FY 2025-26 budget for approval. Motion carried.

AYE: Bilka, Garrelts, Grams, Grimes, Harris, Hinrichs, Lundeen, Philips, Reynolds, Ryan

NAY:

ABSTAIN:

ABSENT: Bergstrom, Harris, Raffety

### **NARD REPORT**

NARD Annual Conference is in Kearney on Sept. 29 & 30, 2025

**NARD Report:** The board voted Reynolds as the NARD delegate and Raffety as the Alternate.

Moved by Bilka, seconded by Lundeen, to approve Reynolds as the NARD delegate and Raffety as the Alternate for approval. Motion carried.

AYE: Bilka, Garrelts, Grams, Grimes, Harris, Hinrichs, Lundeen, Philips, Reynolds, Ryan

NAY:

ABSTAIN:

ABSENT: Bergstrom, Harris, Raffety

### **COMMITTEE REPORTS**

Nothing to report.

### **STAFF REPORTS & NECESSARY ACTION**

Nothing to report

### **MONTHLY REPORTS**

**Republican Basin:** RRCA Annual Meeting August 28 in Concordia KS

**Platte Basin:** Supplemental to Surface Water Well Data presented by Thorburn & Little

**Sand Creek/Little Blue Basin:** Nothing to report

**North Dry Creek:** Final Drone Spraying for broadleaf

**Odessa IPA:** Final Drone Spraying for broadleaf

**Sacramento Creek:** Final Drone Spraying for broadleaf

**Fort Kearny:** Final Drone Spraying for broadleaf

**Fort Kearny West:** Final Drone Spraying for broadleaf

**South Dry Creek:** Final Drone Spraying for broadleaf



## TRI-BASIN NRD BOARD MINUTES

August 20, 2025

Page Four

**Whiskey Slough:** Final Drone Spraying for broadleaf

**Middle Lost Creek:** Nothing to report.

**Lake Seldom:** Nothing to report.

**CoHyst/Platte Basin Coalition:** Nothing to report.

**Rainwater Basin Joint Venture:** Conservation Outcomes Tour with legislative staff went well.

**Platte-Republican Diversion & Republican Basin Augmentation:** Met w/NDWEE – Need additional planning for invasive species

**CNPID Report:** McConaughy is at 43%, Gov Pillen declared Aug 19 as “Nebraska Hydropower Day”

### NEW BUSINESS

Thorburn suggested the board set the Levy hearing for September 17, 2025 during the normal board meeting.

Moved by Reynolds, seconded by Grimes, to approve the levy hearing for September 17, 2025 at regular board meeting for approval. Motion carried.

AYE: Bilka, Garrelts, Grams, Grimes, Harris, Hinrichs, Lundeen, Philips, Reynolds, Ryan

NAY:

ABSTAIN:

ABSENT: Bergstrom, Harris, Raffety

### COMMENTS AND CONCERNS

Nothing to report

### PERSONNEL AND LEGAL MATTERS

There were no personnel or legal issues.

### NEXT BOARD MEETING

TBNRD Regular Board Meeting will be held on Wednesday, September 17, 2025, at 1:30 p.m. at Tri-Basin Natural Resource District, Holdrege, NE.

### ADJOURNMENT

There being no further business, the meeting was adjourned at 11:42 a.m.

### DIRECTORS PRESENT

Bilka, Garrelts, Grams, Grimes, Hinrichs, Lundeen, Raffety, Reynolds, Ryan

### OTHERS PRESENT:

John Thorburn, Sasha Hahn, Scott Dicke, Cammie Kerner Dalton Riefor, Nolan Little, Dudley Nelson, Dave Nelson, Chris Erickson, Reed McClymont Nicole Simeon

Respectfully Submitted:

---

Nicole Simeon, Asst. Secretary

**MINUTES OF THE TRI-BASIN NRD BOARD  
WORKSESSION  
Wednesday, August 20, 2025, 1:00 p.m.  
Tri-Basin Natural Resources District**

The work session of the Tri-Basin Natural Resources District (NRD) was called to order by Chairman, Todd Garrelts at 1:03 p.m. Garrelts noted Public Meeting Law is posted in the meeting room.

**ROLL CALL**

Roll call was taken with nine directors present: Bilka, Garrelts, Grams, Grimes, Hinrichs, Lundeen, Philips, Reynolds, Ryan. Bergstrom, Harris, Hinrichs, Raffety were absent. Notice of the meeting was published in the Holdrege Citizen, Valley Voice and Minden Courier and announced on radio station KRVN, Lexington.

**EXCUSED ABSENCES**

No excused absences.

**MEETING AGENDA**

Moved by Grams, seconded by Reynolds to accept the meeting agenda for the August 20, 2025 Board Work Session Meeting. Motion carried

AYE: Bilka, Garrelts, Grams, Grimes, Hinrichs, Lundeen, Philips, Reynolds, Ryan

NAY:

ABSTAIN:

ABSENT: Bergstrom, Harris, Larson, Raffety

**NEW BUSINESS**

Brundage with CNPPID shared information about Kingsley Dam repair project. Dam safety is the number one consideration. Effects of a failure of Kingsley Dam would be felt all the way to Omaha. During the winter of 21/22 there was some wave damage to the dam. There was more damage in the earlier years. So they need to redo and use big rock rip-rap. Not sure on the exact amount, how they are going to do it or when it will be completed. Current plan is for repairs to begin in early 2029.

Manning explained the Perkins County Canal. Perkins County Canal is a large effort by the state of Nebraska to perfect its water rights under what is called the South Platte River Compact which was an agreement between Colorado and Nebraska that was formalized back in 1923. There a 2 part compact, summer/irrigation allows 120 cfs to Nebraska and in the winter is allowed 500 cfs to Nebraska. Colorado says we wont get that water unless we build the Perkins County Canal. Hoping to have project completed by the end of 2032.

Leibig shared about the NPPD irrigation and hydropower operations in the Platte Basin. NPPD owns 3 irrigation canals that serve 25,000 acres. NPPD owns and operates two hydroelectric generating facilities — at North Platte and Kearney on the Platte River. The generators, totaling 25 megawatts, can serve 9,500 homes.

Little shared TBNRD's Groundwater Management. TBNRD consists of three basins in 3 counties. Gosper, Phelps and Kearney Counties make up Tri-Basin. There are 580,000 certified irrigated acres in TBNRD and over 5000 irrigation wells. All groundwater-irrigated acres must be certified. Transfers of certified

## TRI-BASIN NRD BOARD MINUTES

August 20, 2025

Page Two

irrigated acres are regulated. Transfers of certified irrigated acres are pro-rated if the destination field has higher rate of stream depletion than originating field. Increases in water use for large commercial and industrial uses are also regulated and must be offset.

### **OPEN DISCUSSION**

NRD directors and guests discussed various aspects of Platte Basin water policy. Thorburn emphasized the need for all parties to agree on a common purpose. He presented a proposed purpose statement.

### **COMMENTS AND CONCERNS**

There were no comments or concerns.

### **PERSONNEL AND LEGAL MATTERS**

There were no personnel or legal issues.

### **NEXT BOARD MEETING**

TBNRD Regular Board Meeting will be held on Wednesday, September 17, 2025, at 1:30 p.m. respectively.

### **ADJOURNMENT**

There being no further business, the meeting was adjourned at 3:39 p.m.

### **DIRECTORS PRESENT**

Joe Bilka, Todd Garrelts, Joel Grams, David Grimes, Rob Hinrichs, Joe Larson, Brad Lundeen, Larry Reynolds.

### **OTHERS PRESENT:**

John Thorburn, Nolan Little, Don Blankenau, Nicole Simeon, Tom Jasnoch, Brent Soneson, Alex Linden, Roger Olson, Nancy Garrelts, Matt Wells, Lyndon Vogt, Lon Bohn, Rod Reynolds, Kyle Hauschild, Cory Steinke, Mike Drain, David Nelson, Reed McClymont, Chris Erickson, Tye Marquardt, Gary Robison, Rochelle Jurgens, Tim Boyle, Lee Grove, Dudley Nelson, Scott Dicke, Jennifer Schellpeper, Sam Capps, Tom Downey, Devin Brundage, John McClure, Dean Edson, Ed Schrock

Respectfully Submitted:

---

Nicole Simeon, Asst. Secretary

## Tri-Basin Natural Resources District

## Profit &amp; Loss

August 2025

	Aug 25
Ordinary Income/Expense	
Income	
30300 · Federal Grants & Funds	7,346.07
30500 · General Property Taxes	
30502 · Phelps Co Tax	7,346.07
30503 · Kearney Co Tax	4,546.05
Total 30500 · General Property Taxes	11,892.12
30604 · NE Water Quality	11,038.70
30802 · South Dry Creek Income	22.95
30803 · Fort Kearney Income	21.72
30804 · Ft. Kearney West Income	24.93
30805 · North Dry Creek Income	23.51
30806 · Sac Creek Income	8.03
30807 · Odessa IPA Income	41.48
30900 · Customer Charges	
30910 · Flag Sales	7.50
Total 30900 · Customer Charges	7.50
31200 · Water Jamboree Income	11.49
31900 · Chemigation68	50.00
Total Income	30,488.50
Gross Profit	30,488.50
Expense	
40500 · Auto & Truck Exp.	1,757.89
40700 · Directors Exp.	
40702 · Dir. Exp.-Meals	169.68
Total 40700 · Directors Exp.	169.68
41300 · Dues & Memberships	25,973.48
41500 · Employee Benefits	
41530 · Employee Insurance	-1,250.43
41531 · Employee Retirement	143.89
Total 41500 · Employee Benefits	-1,106.54
41700 · Personnel Exp.	
41702 · Personnel-Meals	9.66
Total 41700 · Personnel Exp.	9.66
41900 · Fees & Licenses	20,167.97
42100 · Information & Education	2,049.57
42500 · Insurance	-2,467.59
43100 · Legal Notices	9.27
43300 · Office Expenses	
43335 · Supplies	2,308.29
Total 43300 · Office Expenses	2,308.29
43400 · Flower Fund	55.64
43500 · Payroll Tax	4,521.35
43700 · Postage	371.32
43941 · Attorney	1,810.20
45000 · Internet Service	210.00
45200 · Telephone Exp.	292.08
45300 · Utilities	688.00
45500 · Salaries-Clerical	16,961.80
45700 · Salaries-Administrative	22,670.88
45900 · Salaries-Technical	18,652.44

1:50 PM

09/04/25

Accrual Basis

## Tri-Basin Natural Resources District

### Profit & Loss

August 2025

	Aug 25
46000 · Salaries - Maint. & Const. NRD	
46002 · Salaries-Summer Intern	2,840.00
Total 46000 · Salaries - Maint. & Const. NRD	2,840.00
46350 · PRRIP	15,620.00
47100 · Intergovernmental C/S	22,108.59
47200 · Offset Depletions	
47201 · Easements	0.00
47200 · Offset Depletions - Other	352.99
Total 47200 · Offset Depletions	352.99
48000 · District Programs	287.00
Total Expense	156,313.97
Net Ordinary Income	-125,825.47
Net Income	-125,825.47

# Tri-Basin Natural Resources District

## Profit & Loss Budget Performance

### August 2025

	Aug 25	Budget	% of Budget	Jul - Aug 25	YTD Budget	% of Budget	Annual Budget
<b>Ordinary Income/Expense</b>							
<b>Income</b>							
30100 · State Grants & Funds	0.00	0.00	0.0%	2,892.32	0.00	100.0%	0.00
30300 · Federal Grants & Funds	7,346.07	0.00	100.0%	7,346.07	0.00	100.0%	0.00
30604 · NE Water Quality	11,038.70	0.00	100.0%	11,038.70	0.00	100.0%	0.00
30801 · Whiskey Slough Income	0.00	0.00	0.0%	13.86	0.00	100.0%	0.00
30802 · South Dry Creek Income	22.95	0.00	100.0%	47.25	0.00	100.0%	0.00
30803 · Fort Kearney Income	21.72	0.00	100.0%	44.89	0.00	100.0%	0.00
30804 · Ft. Kearney West Income	24.93	0.00	100.0%	51.51	0.00	100.0%	0.00
30805 · North Dry Creek Income	23.51	0.00	100.0%	48.52	0.00	100.0%	0.00
30806 · Sac Creek Income	8.03	0.00	100.0%	16.50	0.00	100.0%	0.00
30807 · Odessa IPA Income	41.48	0.00	100.0%	85.73	0.00	100.0%	0.00
30900 · Customer Charges	7.50	0.00	100.0%	-1,830.41	0.00	100.0%	0.00
31200 · Water Jamboree Income	11.49	0.00	100.0%	23.81	0.00	100.0%	0.00
31300 · Miscellaneous Income	0.00	0.00	0.0%	129.00	0.00	100.0%	0.00
31900 · Chemigation68	50.00	0.00	100.0%	1,615.00	0.00	100.0%	0.00
35000 · Reimbursements-Other Org.	0.00	0.00	0.0%	37,895.98	0.00	100.0%	0.00
<b>Total Income</b>	<b>30,488.50</b>	<b>0.00</b>	<b>100.0%</b>	<b>75,705.31</b>	<b>0.00</b>	<b>100.0%</b>	<b>0.00</b>
<b>Gross Profit</b>	<b>30,488.50</b>	<b>0.00</b>	<b>100.0%</b>	<b>75,705.31</b>	<b>0.00</b>	<b>100.0%</b>	<b>0.00</b>
<b>Expense</b>							
40500 · Auto & Truck Exp.	1,757.89	0.00	100.0%	2,966.73	0.00	100.0%	0.00
40700 · Directors Exp.	169.68	0.00	100.0%	169.68	0.00	100.0%	0.00
40900 · Director Per Diem	0.00	0.00	0.0%	200.00	0.00	100.0%	0.00
41300 · Dues & Memberships	25,973.48	0.00	100.0%	30,708.49	0.00	100.0%	0.00
41500 · Employee Benefits	-1,106.54	0.00	100.0%	28,286.60	0.00	100.0%	0.00
41700 · Personnel Exp.	9.66	0.00	100.0%	528.68	0.00	100.0%	0.00
41900 · Fees & Licenses	20,167.97	0.00	100.0%	22,097.97	0.00	100.0%	0.00
42100 · Information & Education	2,049.57	0.00	100.0%	2,550.33	0.00	100.0%	0.00
42500 · Insurance	-2,467.59	0.00	100.0%	2,467.59	0.00	100.0%	0.00
43100 · Legal Notices	9.27	0.00	100.0%	45.88	0.00	100.0%	0.00
43300 · Office Expenses	2,308.29	0.00	100.0%	2,762.13	0.00	100.0%	0.00
43400 · Flower Fund	55.64	0.00	100.0%	164.78	0.00	100.0%	0.00
43500 · Payroll Tax	4,521.35	0.00	100.0%	11,709.44	0.00	100.0%	0.00
43700 · Postage	371.32	0.00	100.0%	1,002.31	0.00	100.0%	0.00
43941 · Attorney	1,810.20	0.00	100.0%	2,063.20	0.00	100.0%	0.00
44700 · Project Operation & Main-Other	0.00	0.00	0.0%	3,772.35	0.00	100.0%	0.00
45000 · Internet Service	210.00	0.00	100.0%	420.00	0.00	100.0%	0.00
45200 · Telephone Exp.	292.08	0.00	100.0%	960.33	0.00	100.0%	0.00
45300 · Utilities	688.00	0.00	100.0%	2,664.04	0.00	100.0%	0.00
45500 · Salaries-Clerical	16,961.80	0.00	100.0%	41,148.96	0.00	100.0%	0.00
45700 · Salaries-Administrative	22,670.88	0.00	100.0%	57,071.90	0.00	100.0%	0.00
45900 · Salaries-Technical	18,652.44	0.00	100.0%	47,980.75	0.00	100.0%	0.00
46000 · Salaries - Maint. & Const. NRD	2,840.00	0.00	100.0%	14,047.25	0.00	100.0%	0.00
46300 · Building Maintenance	0.00	0.00	0.0%	1,200.00	0.00	100.0%	0.00
46350 · PRRIP	15,620.00	0.00	100.0%	30,747.00	0.00	100.0%	0.00
47000 · District Cost-Share	0.00	0.00	0.0%	20,806.89	0.00	100.0%	0.00
47100 · Intergovernmental C/S	22,108.59	0.00	100.0%	115,724.53	0.00	100.0%	0.00
47200 · Offset Depletions	352.99	0.00	100.0%	352.99	0.00	100.0%	0.00
48000 · District Programs	287.00	0.00	100.0%	671.00	0.00	100.0%	0.00
48500 · Water Resources Projects	0.00	0.00	0.0%	44.66	0.00	100.0%	0.00
<b>Total Expense</b>	<b>156,313.97</b>	<b>0.00</b>	<b>100.0%</b>	<b>445,336.46</b>	<b>0.00</b>	<b>100.0%</b>	<b>0.00</b>
<b>Net Ordinary Income</b>	<b>-125,825.47</b>	<b>0.00</b>	<b>100.0%</b>	<b>-369,631.15</b>	<b>0.00</b>	<b>100.0%</b>	<b>0.00</b>
<b>Net Income</b>	<b>-125,825.47</b>	<b>0.00</b>	<b>100.0%</b>	<b>-369,631.15</b>	<b>0.00</b>	<b>100.0%</b>	<b>0.00</b>

**Tri-Basin Natural Resources District**

Bank Accounts History

As of August 31, 2025

8:14 AM

09/08/2025

Accrual Basis

	Date	Num	Name	Credit	Debit	Balance
<b>Total 10213 · Main Checking</b>				<b>176,879.35</b>	<b>116,514.94</b>	<b>118,890.08</b>
11105 · Bruning Bank CD						161,966.21
<b>Total 11105 · Bruning Bank CD</b>						<b>161,966.21</b>
11204 · Bldg Sinking Fund						87,457.87
<b>Total 11204 · Bldg Sinking Fund</b>						<b>87,457.87</b>
11205 · Vehicle Sinking Fund						80,383.72
	08/31/2025			0.10		80,383.62
	08/31/2025				0.10	80,383.72
<b>Total 11205 · Vehicle Sinking Fund</b>				<b>0.10</b>	<b>0.10</b>	<b>80,383.72</b>
11206 · Water Res Sinking Fund						135,156.52
<b>Total 11206 · Water Res Sinking Fund</b>						<b>135,156.52</b>
10500 · Accounts Receivable						76,481.58
	08/01/2025	ACH	NE Dept. of Natural R	38,714.40		37,767.18
	08/05/2025	99352	RainwaterBasin Joint	18,176.30		19,590.88
	08/07/2025	34748	Kearney County Treas	4,531.50		15,059.38
	08/07/2025	042223	Ward Eckloff		8.06	15,067.44
	08/07/2025		Ward Eckloff	8.06		15,059.38
	08/11/2025	042223	Kearney County Treasurer		4,531.50	19,590.88
	08/11/2025		Carol Iodence	136.74		19,454.14
	08/18/2025	99513	Platte River Recovery	19,389.78		64.36
	08/18/2025	1168	Tyler Lindstrom	7,245.23		(7,180.87)
	08/18/2025	2040	Todd Garrelts	50.00		(7,230.87)
	08/18/2025	4099	Monte Fleming	64.50		(7,295.37)
	08/19/2025	042223	Todd Garrelts		50.00	(7,245.37)
<b>Total 10500 · Accounts Receivable</b>				<b>88,316.51</b>	<b>4,589.56</b>	<b>(7,245.37)</b>
<b>TOTAL</b>				<b>265,195.96</b>	<b>121,104.60</b>	<b>576,609.03</b>



2:52 PM

09/04/25

Accrual Basis

**Tri-Basin Natural Resources District**  
*Bank Accounts History*  
**As of August 31, 2025**

<i>Date</i>	<i>Num</i>	<i>Credit</i>	<i>Memo</i>	<i>Debit</i>	<i>Balance</i>
10214 · Whiskey Slough					7,092.37
08/12/2025			Deposit	5.05	7,097.42
<b>Total 10214 · Whiskey Slough</b>				<b>5.05</b>	<b>7,097.42</b>
10215 · Ft Kearny West					12,611.25
08/12/2025			Deposit	9.50	12,620.75
08/31/2025			Interest	24.93	12,645.68
<b>Total 10215 · Ft Kearny West</b>				<b>34.43</b>	<b>12,645.68</b>
10216 · South Dry Creek					11,222.27
08/31/2025			Interest	22.95	11,245.22
<b>Total 10216 · South Dry Creek</b>				<b>22.95</b>	<b>11,245.22</b>
10217 · Ft. Kearny					10,808.02
08/31/2025			Interest	21.72	10,829.74
<b>Total 10217 · Ft. Kearny</b>				<b>21.72</b>	<b>10,829.74</b>
10218 · Water Jamboree					3,952.80
08/13/2025			Interest	11.49	3,964.29
<b>Total 10218 · Water Jamboree</b>				<b>11.49</b>	<b>3,964.29</b>
10219 · North Dry Creek					10,004.01
08/13/2025			Interest	23.51	10,027.52
<b>Total 10219 · North Dry Creek</b>				<b>23.51</b>	<b>10,027.52</b>
10220 · Sacramento Creek					9,012.55
08/31/2025			Interest	8.03	9,020.58
<b>Total 10220 · Sacramento Creek</b>				<b>8.03</b>	<b>9,020.58</b>
10222 · Odessa					20,774.51
08/31/2025			Interest	41.48	20,815.99
<b>Total 10222 · Odessa</b>				<b>41.48</b>	<b>20,815.99</b>

**Tri-Basin Natural Resources District**  
*Bank Accounts History*  
**As of August 31, 2025**

---

<i>Date</i>	<i>Num</i>	<i>Credit</i>	<i>Memo</i>	<i>Debit</i>	<i>Balance</i>
<i>TOTAL</i>				<i>168.66</i>	<i>85,646.44</i>

2:52 PM

09/04/25

Accrual Basis

# Tri-Basin Natural Resources District

## Expenses by Vendor Detail

### August 2025

Date	Memo	Account	Amount	Balance
<b>Ace Hardware</b>				
08/12/2025		43335 · Supplies	489.25	489.25
Total Ace Hardware			489.25	489.25
<b>Amy Lohmeyer</b>				
08/12/2025	Office Cleaning	45300 · Utilities	300.00	300.00
Total Amy Lohmeyer			300.00	300.00
<b>Becky J. Marshall</b>				
08/18/2025	Easement Lots 8&9 11-...	46350 · PRRIP	1,500.00	1,500.00
Total Becky J. Marshall			1,500.00	1,500.00
<b>Blankenau Wilmoth Jarecke LLP</b>				
08/25/2025		43941 · Attorney	1,810.20	1,810.20
Total Blankenau Wilmoth Jarecke LLP			1,810.20	1,810.20
<b>Cardmember Services - Chase Ink</b>				
08/27/2025	Fuel	40500 · Auto & Truck Exp.	251.01	251.01
08/27/2025	I & E Meeting Sidney H...	42100 · Information & Education	110.00	361.01
08/27/2025	Burn Tour	42100 · Information & Education	319.17	680.18
08/27/2025	Meal	41702 · Personnel-Meals	9.66	689.84
08/27/2025	PRD	47200 · Offset Depletions	352.99	1,042.83
08/27/2025	Flowers	43400 · Flower Fund	55.64	1,098.47
08/27/2025	Meal snf donuts for Me...	40702 · Dir. Exp.-Meals	158.90	1,257.37
08/27/2025	Dues and Memberships	41900 · Fees & Licenses	218.92	1,476.29
08/27/2025	Postage	43700 · Postage	30.99	1,507.28
08/27/2025	Executive Meeting Don...	40702 · Dir. Exp.-Meals	10.78	1,518.06
Total Cardmember Services - Chase Ink			1,518.06	1,518.06
<b>Carie Lynch_</b>				
08/04/2025	Help with budget	41900 · Fees & Licenses	594.75	594.75
Total Carie Lynch_			594.75	594.75
<b>Carol L. Anderson</b>				
08/18/2025	Easement SE1/4 5-7-16	47201 · Easements	0.00	0.00
08/18/2025	SE1/4 5-7-16	47201 · Easements	0.00	0.00
Total Carol L. Anderson			0.00	0.00
<b>Cornhusker Press</b>				
08/12/2025	Summer 2025 Newsletter	42100 · Information & Education	630.40	630.40
Total Cornhusker Press			630.40	630.40
<b>Diedrichsen Lawn Service</b>				

2:52 PM

09/04/25

Accrual Basis

# Tri-Basin Natural Resources District

## Expenses by Vendor Detail

### August 2025

Date	Memo	Account	Amount	Balance
08/12/2025	Main Office Mowing	45300 · Utilities	360.00	360.00
Total Diedrichsen Lawn Service			360.00	360.00
<b>FNIC</b>				
08/04/2025	Reimburse for overpay...	42500 · Insurance	-2,467.59	-2,467.59
Total FNIC			-2,467.59	-2,467.59
<b>Funk School Community Center</b>				
08/04/2025	RWBJV Conservation ...	42100 · Information & Education	200.00	200.00
Total Funk School Community Center			200.00	200.00
<b>Glenwood Telephone</b>				
08/12/2025		45000 · Internet Service	210.00	210.00
08/12/2025		45200 · Telephone Exp.	142.08	352.08
Total Glenwood Telephone			352.08	352.08
<b>HA Catering</b>				
08/12/2025	Meetings catering lunch	42100 · Information & Education	375.00	375.00
Total HA Catering			375.00	375.00
<b>Holdrege Daily Citizen</b>				
08/12/2025		43100 · Legal Notices	9.27	9.27
Total Holdrege Daily Citizen			9.27	9.27
<b>Holdrege Soft Water</b>				
08/12/2025	Water	45300 · Utilities	28.00	28.00
Total Holdrege Soft Water			28.00	28.00
<b>Jeffrey W. Marshall</b>				
08/18/2025	Lots 8& 9 11-8-19	46350 · PRRIP	1,500.00	1,500.00
Total Jeffrey W. Marshall			1,500.00	1,500.00
<b>Judith A. Marshall</b>				
08/18/2025	NW1/4 14-8-19	46350 · PRRIP	0.00	0.00
08/18/2025	NW 1/4 14-8-19	46350 · PRRIP	3,000.00	3,000.00
Total Judith A. Marshall			3,000.00	3,000.00
<b>KRVN Radio</b>				
08/12/2025	Advertising	42100 · Information & Education	340.00	340.00
Total KRVN Radio			340.00	340.00
<b>Longitude 103, Inc.</b>				

2:52 PM

09/04/25

Accrual Basis

# Tri-Basin Natural Resources District

## Expenses by Vendor Detail

### August 2025

Date	Memo	Account	Amount	Balance
08/12/2025	Invoice #04645	41900 · Fees & Licenses	3,826.33	3,826.33
08/12/2025	Invoice # 04664 Annual...	41900 · Fees & Licenses	15,257.97	19,084.30
Total Longitude 103, Inc.			19,084.30	19,084.30
<b>Marchall Ranch Inc.</b>				
08/18/2025	Easement Lots 6,7,8 &...	46350 · PRRIP	3,000.00	3,000.00
Total Marchall Ranch Inc.			3,000.00	3,000.00
<b>NARD Foundation</b>				
08/12/2025	FY 25-26 Dues	41300 · Dues & Memberships	25,973.48	25,973.48
Total NARD Foundation			25,973.48	25,973.48
<b>Nebraska Dept. of Env. &amp; Energy</b>				
08/22/2025	Natural Resource Wate...	30604 · NE Water Quality	-11,038.70	-11,038.70
Total Nebraska Dept. of Env. & Energy			-11,038.70	-11,038.70
<b>Nickel Farms Inc.</b>				
08/18/2025	Easement NW1/4 27-8...	47201 · Easements	0.00	0.00
Total Nickel Farms Inc.			0.00	0.00
<b>Novita Negley</b>				
08/19/2025	Cookies for Lori's retire...	42100 · Information & Education	75.00	75.00
Total Novita Negley			75.00	75.00
<b>Olsson Associates Inc.</b>				
08/12/2025	TBNRD Groundwater S...	47100 · Intergovernmental C/S	21,329.21	21,329.21
Total Olsson Associates Inc.			21,329.21	21,329.21
<b>Quill Corporation</b>				
08/04/2025	Ink Cartridges	43335 · Supplies	496.96	496.96
Total Quill Corporation			496.96	496.96
<b>Southern Power District</b>				
08/12/2025	07-16-05 SE/SE	48000 · District Programs	128.00	128.00
08/12/2025	08-16-27- NE/NW	48000 · District Programs	159.00	287.00
08/12/2025	08-19-09 SW/SE	46350 · PRRIP	557.00	844.00
08/12/2025	08-19-10 SW/SW	46350 · PRRIP	531.00	1,375.00
08/12/2025	08-19-10 SE/SW	46350 · PRRIP	508.00	1,883.00
08/12/2025	08-19-11 SW/SW	46350 · PRRIP	288.00	2,171.00
08/12/2025	08-19-11 SE/SW	46350 · PRRIP	546.00	2,717.00
08/12/2025	08-19-15 SE/NE	46350 · PRRIP	397.00	3,114.00
08/12/2025	08-19-17 NW/SW	46350 · PRRIP	588.00	3,702.00
08/12/2025	08-20-10 SE/SE	46350 · PRRIP	205.00	3,907.00

2:52 PM

09/04/25

Accrual Basis

**Tri-Basin Natural Resources District**  
**Expenses by Vendor Detail**  
**August 2025**

Date	Memo	Account	Amount	Balance
Total Southern Power District			3,907.00	3,907.00
<b>SpartanNash</b>				
08/12/2025	Supplies for office	43335 · Supplies	67.07	67.07
Total SpartanNash			67.07	67.07
<b>Supply Solutions Pro</b>				
08/12/2025	2 toners for Sharp Printer	43335 · Supplies	1,255.01	1,255.01
Total Supply Solutions Pro			1,255.01	1,255.01
<b>The Flatwater Group Inc.</b>				
08/12/2025	Update Contract #1574	47100 · Intergovernmental C/S	779.38	779.38
08/12/2025		47100 · Intergovernmental C/S		779.38
Total The Flatwater Group Inc.			779.38	779.38
<b>Triphibian Rike LLC</b>				
08/18/2025	Easement W1/2 SW1/4...	46350 · PRRIP	3,000.00	3,000.00
Total Triphibian Rike LLC			3,000.00	3,000.00
<b>Unanimous Inc.</b>				
08/12/2025	Annual Domain	41900 · Fees & Licenses	270.00	270.00
Total Unanimous Inc.			270.00	270.00
<b>United States Post Office</b>				
08/06/2025	Newsletter	43700 · Postage	340.33	340.33
Total United States Post Office			340.33	340.33
<b>WEX Bank</b>				
08/13/2025	Fuel	40500 · Auto & Truck Exp.	1,506.88	1,506.88
Total WEX Bank			1,506.88	1,506.88
<b>TOTAL</b>			<b>80,585.34</b>	<b>80,585.34</b>



1723 Burlington  
Holdrege, NE 68949  
308. 995.6688  
FAX 308.995.6992  
[tribasin@tribasinnrd.org](mailto:tribasin@tribasinnrd.org)

## *Natural Resources District*

General Manager  
JOHN THORBURN

Chairman  
TODD GARRELTS  
Holdrege, Nebraska

Vice Chairman  
JOE BILKA  
Holdrege, Nebraska

Treasurer  
JEFF RYAN  
Heartwell, Nebraska

Secretary  
ROB HINRICHS  
Axtell, Nebraska

BRIAN BERGSTROM  
Axtell, Nebraska

JOEL GRAMS  
Minden, Nebraska

DAVID GRIMES  
Minden, Nebraska

ED HARRIS  
Loomis, Nebraska

JOE LARSON  
Loomis, Nebraska

BRAD LUNDEEN  
Wilcox, Nebraska

G. REED PHILIPS  
Bertrand, Nebraska

DAVID RAFFETY  
Kearney, Nebraska

LARRY REYNOLDS  
Lexington, Nebraska

**TRI-BASIN NRD  
FINANCIAL STATEMENT  
August 2025**

Account Description	Amount
Aflac	\$79.56
Attorney	\$1,810.20
Auto & Truck	\$1,757.89
Building Sinking Fund	\$6,144.45
Cancer Insurance	\$330.35
Director Expenses	\$169.68
District Programs	\$287.00
Dues & Memberships	\$25,973.48
Fees & Licenses	\$20,167.97
Flex	\$619.82
Flower Fund	\$55.64
Information & Education	\$2,049.57
Intergovernmental C/S	\$22,108.59
Internet Services	\$210.00
Legal Notices	\$9.27
Offset Depletions	\$352.99
Personnel	\$9.66
Postage	\$371.32
PRRIP	\$15,620.00
Retirement W/H	\$3,885.39
Sales Tax Payable	\$2.41
Supplies	\$2,308.29
Telephone	\$142.08
Utilities	\$688.00
<b>Total for August 2025</b>	<b>\$105,153.61</b>

Jeff Ryan, Treasurer

Please publish in the legal notices one time (in **PARAGRAPH FORM**)

and send proof of publication to Tri-Basin NRD, 1723 Burlington St.,  
Holdrege



## INVOICE

BWJ Law Group  
2900 South 70th Street, Suite 150  
Lincoln, NE 68506

Invoice #: 9946  
Date: 08-31-2025  
Due On: 09-30-2025

Tri-Basin Natural Resources District  
1723 North Burlington  
Holdrege, NE 68949

Matter Name: 135.01 NRD Matters

### Services

Date	Atty	Description	Quantity	Rate	Total
08-12-25	DB	Telephone conference with Mr. Thorburn.	0.10	250.00	\$25.00
08-18-25	DB	Telephone conference with Mr. Thorburn; review and edit meeting water management goal statement; provide template agreement.	0.80	250.00	\$200.00
08-20-25	DB	Review issues in preparation for Tri-Basin meeting; attend meeting in Kearney.	7.50	250.00	\$1,875.00
08-28-25	DB	Email communications.	0.40	250.00	\$100.00
08-29-25	DB	Review draft legislation and provide email response with my thoughts; email communications.	0.40	250.00	\$100.00

Services Subtotal: \$2,300.00

### Expenses

08-20-25	DB	Mileage to and from Kearney	280.00	0.70	\$196.00
----------	----	-----------------------------	--------	------	----------

Expenses Subtotal: \$196.00



---

Subtotal	\$2,496.00
Total	\$2,496.00

---

Total Matter Balance \$2,496.00

Please make all amounts payable to: Blankenau Wilmoth Jarecke, LLP

CONFIDENTIAL INFORMATION PROTECTED BY ATTORNEY/CLIENT PRIVILEGE



## YOUR ACCOUNT MESSAGES (CONTINUED)

Your AutoPay amount will be reduced by any payments or merchant credits that post to your account before we process your AutoPay payment. If the total of these payments and merchant credits is more than your set AutoPay amount, your AutoPay payment for that month will be zero.

## ACCOUNT ACTIVITY

Date of Transaction	Merchant Name or Transaction Description	\$ Amount
08/20	Amazon.com*R97MD7P43 Amzn.com/bill WA SASHA HAHN TRANSACTIONS THIS CYCLE (CARD 3298) \$80.00 <i>41700-Lori retirement gift card</i>	80.00
08/20	AUTOMATIC PAYMENT - THANK YOU	-1,518.06
08/08	PUMP & PANTRY #46 YORK NE <i>40500-Fuel</i>	40.40
08/11	SAPP BROS CENTER YORK NE JOHN L THORBURN TRANSACTIONS THIS CYCLE (CARD 1299) \$1438.27- INCLUDING PAYMENTS RECEIVED <i>40500-Fuel</i>	39.39
08/01	TRACTOR SUPPLY #2860 HOLDREGE NE <i>43335-Shop Supplies</i>	63.05
08/04	BOSSelman ENERGY INC HOLDREGE NE <i>40500 Fuel</i>	97.20
08/11	PHEASANTS FOREVER 402-640081 NE <i>43335-flower books for interns</i>	107.00
08/20	BOMGAARS 114 KEARNEY NE <i>43335-Shop Supplies</i>	9.37
08/19	MENARDS KEARNEY NE KEARNEY NE DALTON C REFIOR TRANSACTIONS THIS CYCLE (CARD 3391) \$362.18 <i>43335-Supplies-Armory</i>	85.56
08/07	CASEYS #1606 HOLDREGE NE <i>41702-mtg Donuts</i>	36.00
08/20	BATTERY JUNCTION 860-581-4540 CT ESTHER SMITH TRANSACTIONS THIS CYCLE (CARD 0440) \$57.40 <i>43335-Supplies</i>	21.40
07/26	CONTROL YOURS 866-574-8820 NE <i>41900-Fee &amp; Licenses</i>	55.00
08/02	ONTIMETEL DIALMYCALLS 800-928-2086 FL <i>41900-Fees &amp; Licenses</i>	54.99
08/07	ADOBE *800-833-6687 800-833-6687 CA <i>41900-Fees &amp; Licenses</i>	47.98
08/11	STAMPS.COM 888-434-0055 DC <i>43700 Postage</i>	300.00
08/17	Stamps.com 512-8864006 CA <i>43700 Postage</i>	30.99
08/21	NE ASSN OF RES DIST NRDNET.ORG NE <i>41703-Personnel Reg</i>	2,100.00
08/22	APR*APPRIVER 850-932-5338 FL NICOLE SIMEON TRANSACTIONS THIS CYCLE (CARD 2501) \$2646.91 <i>41900 Fees &amp; Licenses</i>	57.95

### 2025 Totals Year-to-Date

Total fees charged in 2025	\$0.00
Total interest charged in 2025	\$0.00

Year-to-date totals do not reflect any fee or interest refunds you may have received.

## INTEREST CHARGES

Your Annual Percentage Rate (APR) is the annual interest rate on your account.

Balance Type	Annual Percentage Rate (APR)	Balance Subject To Interest Rate	Interest Charges
<b>PURCHASES</b>			
Purchases	17.49%(v)(d)	- 0 -	- 0 -
<b>CASH ADVANCES</b>			
Cash Advances	29.24%(v)(d)	- 0 -	- 0 -
<b>BALANCE TRANSFERS / MY CHASE LOAN</b>			
Balance Transfers	17.49%(v)(d)	- 0 -	- 0 -
My Chase Loan	17.49%(v)(d)	- 0 -	- 0 -

31 Days in Billing Period

(v) = Variable Rate

(d) = Daily Balance Method (including new transactions)

(a) = Average Daily Balance Method (including new transactions)

Please see Information About Your Account section for the Calculation of Balance Subject to Interest Rate, Annual Renewal Notice, How to Avoid Interest on Purchases, and other important information, as applicable.



Manage your account online at :  
[www.chase.com/cardhelp](http://www.chase.com/cardhelp)

Customer Service:  
1-800-945-2028

Mobile: Download the  
Chase Mobile® app today

September 2025												
S	M	T	W	T	F	S						
31	1	2	3	4	5	6						
7	8	9	10	11	12	13						
14	15	16	17	18	19	20						
21	22	23	24	25	26	27						
28	29	30	1	2	3	4						
5	6	7	8	9	10	11						

New Balance  
**\$3,226.28**  
Minimum Payment Due  
**\$40.00**  
Payment Due Date  
**09/20/25**

## CHASE ULTIMATE REWARDS® SUMMARY

Previous points balance	96,070
+ 1 Point per \$1 earned on all purchases	3,227
+ 4 Pts per \$1 internet, cable, phone, ofc sply	0
+ 1 Point per \$1 on gas stns & restaurants	213

**Total points available for  
redemption 99,510**

1. Late Payment Warning:

If we do not receive your minimum payment by the due date, you may have to pay a late fee, and existing and new balances may become subject to the Default APR.

2. Minimum Payment Warning:

Enroll in Auto-Pay and avoid missing a payment. To enroll, go to [www.chase.com](http://www.chase.com)

## ACCOUNT SUMMARY

Account Number: XXXX XXXX XXXX 1299

Previous Balance	\$1,518.06
Payment, Credits	-\$1,518.06
Purchases	+\$3,226.28
Cash Advances	\$0.00
Balance Transfers	\$0.00
Fees Charged	\$0.00
Interest Charged	\$0.00
<b>New Balance</b>	<b>\$3,226.28</b>

Opening/Closing Date	07/27/25 - 08/26/25
Revolving Credit Amount	\$45,000
Available Credit	\$41,773
Cash Access Line	\$2,250
Available for Cash	\$2,250

<b>Past Due Amount</b>	<b>\$0.00</b>
<b>Balance over the Credit Access Line</b>	<b>\$0.00</b>

## YOUR ACCOUNT MESSAGES

Starting October 26th, 2025, the Chase DiningSM storefront in Ultimate Rewards will be decommissioned and Chase cardmembers will no longer be able to redeem points towards pre-paid restaurant reservations. Chase cardmembers will still be able to redeem for cash back, travel and more through Ultimate Rewards.

Your next AutoPay payment for \$3,226.28 will be deducted from your Pay From account and credited on your due date. If your due date falls on a Saturday, we'll credit your payment the Friday before.

0000001 FIS33339 C 1  
0475

Y 9 26 25/08/26

Page 1 of 2

05686 MA DA 27450 23810000010002745001

Please Complete For



P.O. BOX 15123  
WILMINGTON, DE 19850-5123  
For Undeliverable Mail Only

42463153424512990000400000322628000000009

**AUTOPAY IS ON**  
See Your Account  
Messages for details.

Account number: XXXX XXXX XXXX 1299

27450 BEX 9 23825 C  
JOHN L THORBURN  
TRI-BASIN NRD  
1723 BURLINGTON ST  
HOLDREGE NE 68949-1313

Amount Enclosed  
**AUTOPAY IS ON**

CARDMEMBER SERVICE  
PO BOX 6294  
CAROL STREAM IL 60197-6294

⑆5000 160 28⑆ 159534 2451 2999⑈

# ***Water Management Specialist Report***

***July 16, 2025 – August 15, 2025***

***For: NRCS, Tri-Basin NRD, and CNPP&ID***

## **EQIP:**

- Signup for EQIP's 2026 funding can be taken any time.
- Current applications not funded in 2025 can be deferred to Fiscal Year 2026 funding.
- The TBNRD interns and I have completed field checking EQIP dryland, no-till, and wildlife commitments across Gosper, Phelps and Kearney Counties.
- Irrigation records are slowly coming in.

## **CSP:**

- Signup for CSP's 2026 funding can be taken any time.
- Current applications not funded in 2025 can be deferred to Fiscal Year 2026 funding.
- 2025 records for completed enhancements and practices are starting to come in.
- 2025 records need submitted soon so we have time to review the records and get them certified by the end of our fiscal year of September 30<sup>th</sup>. The sooner we have the records, the sooner we can review. Then if records are missing, there is more time to get these in time to certify. Having the records certified by September 30<sup>th</sup> ensures the producer will get paid when they want to be paid.

## **NSWCP:**

- The first chance at approval for irrigation practices is at the September TBNRD Board meeting. Applications need to be signed by the owner and submitted to the NRCS prior to the end of August. Work on the project started prior to approval will not be funded.

## **Demonstrations:**

### **TBAWMN:**

- Emailing each Monday the Weekly Crop ET from 12 total atmometer sites across the Tri-Basin NRD.

### **TAPS:**

- Nothing to report at this time.

### **On-Farm Research:**

- Nothing to report at this time.

## **Meetings:**

- Attended GPS training on August 13<sup>th</sup>.

## **Ultrasonics:**

- Completed 4 ultrasonic flow measurements to see if the permanent flow meters are recording accurately.

## **Other:**

- The 6<sup>th</sup> and 7<sup>th</sup> issues of the 2025 Tri-Basin Irrigator were sent out.

## **Upcoming Events:**

- Aug 22<sup>nd</sup>: CNPPID Committee Meeting
- Sept 2<sup>nd</sup>: CNPPID Board Meeting
- Sept 9<sup>th</sup>-11<sup>th</sup>: Husker Harvest Days
- Sept 10<sup>th</sup>: Partner Meeting \*
- Sept 17<sup>th</sup>: TBNRD Board Meeting

\* Planning to attend

Curtis W. Scheele, Water Management Specialist

# Approved NSWCP COST-SHARE by CATEGORY

2025-2026

NSWCP BALANCE		\$	41,220.64		
2025-2026 Allocation		\$	56,595.26		
March Reallocation					
	EROSION (10%) 1, 2, 3, 4, 6, 7, 8, 10, 11, 18 & 19		WATER (70%) 3, 5, 6, 13 & 17	RANGE (20%) 9, 10, 11, 14, 18, 19 & 20	TOTALS
July 2024-2025 Balance Forward	\$ 4,122.06	\$	28,854.45	\$ 8,244.13	\$41,220.64
Allocation	\$5,659.53		\$39,616.68	\$11,319.05	\$56,595.26
July	\$0.00		\$0.00	\$0.00	\$0.00
	\$0.00		\$3,000.00	\$0.00	\$3,000.00
August	\$0.00		-\$1,000.00	\$0.00	-\$1,000.00
	\$0.00		\$0.00	\$0.00	\$0.00
September	\$0.00		\$0.00	\$0.00	\$0.00
					\$0.00
October					\$0.00
					\$0.00
November					\$0.00
					\$0.00
December					\$0.00
					\$0.00
January					\$0.00
					\$0.00
February					\$0.00
					\$0.00
Reallocation Funds					\$0.00
March					\$0.00
					\$0.00
April					\$0.00
					\$0.00
May					\$0.00
					\$0.00
June					\$0.00
					\$0.00
BALANCE	\$9,781.59		\$70,471.13	\$19,563.18	\$99,815.90

**NSWCP COST-SHARE PROGRAM**

<b>BEGINNING BALANCE</b>		<b>8/20/2025</b>	<b>\$97,815.90</b>
	Approved	8/20/2025	\$0.00
	Cancelled Applications		\$0.00
	Slippage		\$0.00
<b>CURRENT BALANCE</b>	<b>NSWCP FUNDS AVAILABLE</b>	<b>9/17/2025</b>	<b>\$97,815.90</b>
	<b>APPROVAL RECOMMENDED</b>		\$0.00
	<b>NOT APPROVED</b>		\$0.00

<b>NSWCP APPLICATIONS</b>							<b>APPROVAL</b>
<b>NC11 CRITICAL AREA PLANTING</b>	<b>NAME</b>	<b>CO</b>	<b>ACRES BENEFITTED</b>	<b>TONS EROSION SAVED</b>	<b>PER TON SOIL EROSION SAVED</b>	<b>REQUEST</b>	<b>RECOMMENDED</b>
						\$0.00	
<b>NC14 PLANNED GRAZING</b>	<b>NAME</b>	<b>CO</b>	<b>ACRES BENEFITTED</b>	<b>SCORE</b>	<b>BENEFIT</b>	<b>REQUEST</b>	
						\$0.00	
<b>NC17 IRR. WATER MGMT</b>	<b>NAME</b>	<b>CO</b>	<b>ACRES BENEFITTED</b>	<b>SCORE</b>	<b>BENEFIT</b>	<b>REQUEST</b>	
						\$0.00	
<b>NC19 REPAIR OF PRACTICE - DIVERSION REPAIR</b>	<b>NAME</b>	<b>CO</b>	<b>ACRES BENEFITTED</b>	<b>TONS EROSION SAVED</b>	<b>PER TON SOIL EROSION SAVED</b>	<b>REQUEST</b>	
						\$0.00	

## Groundwater transfer requests

September 10, 2025

Transfer #	Name	Parcel from	From Legal	Parcel to	To Legal	# of Acres	County Basin
------------	------	-------------	------------	-----------	----------	------------	--------------

## Irrigated Acre transfer requests

Transfer #	Name	Parcel from	From Legal	Parcel to	To Legal	# of Acres	County Basin

## WCIP Applications for approval

WCIP Contract #	Owner - Operator	Parcel	Legal Location (see maps for more defined location)	Well	Contract Acres	County Basin

## Compliance Issues, HEL and Variance Requests

Name	Parcel	Parcel Location	Compliance Issue, HEL or Request	# Certified Irr Acres in Parcel	County Basin
Malcom Dornhoff	334600	NE ¼ Section 5-7- 13	Conservation Plan --- Dry Land Acres	125.67	Kearney Little Blue
Fishell A & A JV	273800	SW ¼ Section 25-7- 16	Conservation Plan [Surface Water Only Acres on this parcel]	146.04	Kearney Platte
Koller Farms Inc	233400 233300	W ½ West ½ Section 16-6- 14 NW ¼ Section 16-6- 14	Conservation Plan --- Dry Land Acres	85.12 [NW ¼]	Kearney Little Blue
William & James Miller JV	2023003.00	Pt NE ¼ Section 13-4- 14 Franklin Co	Conservation Plan --- Dry Land Acres		Franklin Republican
Olsen Cattle Company LLC	263200	N ½ Section 1-7- 16	Conservation Plan --- Dry Land Acres	268.52	Kearney Platte
Larry Paitz	268000	NE ¼ Section 13-7- 16	Conservation Plan --- Dry Land Acres	416.18	Kearney Platte
Fort Kearney Consolidated	314800	NE 1/4; S 1/2 SE 1/4; Middle 1/4 on the West 1/2 Section 5-7- 14	Conservation Plan	213.33	Kearney Platte
Fort Kearney Consolidated	352100	Entire SW ¼ Section 32-8- 14	Conservation Plan	402.51	Kearney Platte
Brandon Jameson	127100	NE ¼ Section 19-5- 14	Conservation Plan	129.22	Kearney Republican
Brandon Jameson	127100	NE ¼ Section 19-5- 14	Conservation Plan	136.96	Kearney Republican
Brent Bergstrom	168600	SW ¼ Section 18-5- 16	Conservation Plan	136.96	Kearney Republican



# Crop Rotation / Residue Management / Gully Treatment

Nebraska Conservation Planning Sheet 18

Page 1 of 2

USDA Natural Resources Conservation Service  
Lincoln, NE

Revised April 2017

Name: Malcom Dornhoff

Date: 8/4/25

Legal Description: NE ¼ 5-7-13

## Crop Rotation Requirements

Tract(s)	Field #(s)	Year 1	Year 2	Year 3	Year 4	Year 5	Year 6	Year 7	Year 8
14510	5	Corn	Soybean						

The appropriate crop is listed for each year of the rotation and starts over at Year 1 after the last year. Obtain Nebraska Planning Sheet No. 5 for additional information and allowed crop substitutes.

## Other Requirements:

(Ephemeral Gully Control Measures and requirements are documented on Page 2 of this planning sheet)

## Ground Cover/Planting/Tillage Requirements<sup>1/</sup>

Tract(s)	Field #(s)	2/ Crop	3/ Previous Crop	4/ Tillage/ Planting System	% Ground (Residue) Cover	Ridge Height (in.)	Row Width (in.)	Row Direction	5/ Strip Width	Time Frame
14510	5	Corn	Soybean	ST	35					After Planting
14510	5	Soybean	Corn	ST	35					After Planting

### Footnotes:

1/ Soil loss calculations for this compliance plan are documented in NRCS files.

2/ Crop column is for the crop being planted; it can also be fallow.

3/ Previous crop column is for the prior year's crop (residue). If the field was in fallow the previous year, indicate the fallow type (wheat fallow, corn fallow, etc.)

### 4/ Tillage/Planting System Types:

ST = Spring Mulch Tillage

NONE = Tillage not allowed

\*NT = No Till

FT = Fall Mulch Tillage

SP = Spring Plow

\*STP = Strip Till (Till-Plant)

MT = Mulch Tillage

FP = Fall Plow

RT = Ridge Till

RC = Row Cultivation allowed

\* Row Cultivation is not allowed with continuous No-Till or Strip-Till Systems.

5/ Strip Width is the distance between wind strips, windbreaks, trap strips, wind barriers, contour strips, or contour buffer-strips.



Date: 8/26/2025

## Conservation Plan Map

Client(s): MALCOM RAY DORNHOFF  
Location: NE 1/4 5-7-13  
Kearney County, Nebraska  
Approximate Acres: 0.40  
Land Units: Tract 14510, Fields 5

Assisted By: LISA BERKEYPILE  
USDA-NRCS  
MINDEN SERVICE CENTER


Tract	Land Unit	Practice Name	Planned Amt	Planned Date
14510	5	Conservation Crop Rotation (328)	0.4	2025
14510	5	Residue and Tillage Management, Reduced Till (345)	0.4	2025




Prepared with assistance from USDA-Natural Resources Conservation Service

0 376 Feet

### Conservation Practice Polygons

 Conservation Crop Rotation (328)

 Residue and Tillage Management, Reduced Till (345)

 Practice Schedule PLUS





# Crop Rotation / Residue Management / Gully Treatment

Nebraska Conservation Planning Sheet 18

Page 1 of 2

USDA Natural Resources Conservation Service  
Lincoln, NE

Revised April 2017

Name: Fishell A & A JV

Date: 8/4/25

Legal Description: SW 1/4 25-7-16

Platte Irr

Parcel 2738.00

## Crop Rotation Requirements

Surface 3.2 acres  
water only

Tract(s)	Field #(s)	Year 1	Year 2	Year 3	Year 4	Year 5	Year 6	Year 7	Year 8
71	4/5	Corn	Soybean						

NO  
cutting  
g-water  
acres

The appropriate crop is listed for each year of the rotation and starts over at Year 1 after the last year. Obtain Nebraska Planning Sheet No. 5 for additional information and allowed crop substitutes.

## Other Requirements:

(Ephemeral Gully Control Measures and requirements are documented on Page 2 of this planning sheet)

## Ground Cover/Planting/Tillage Requirements<sup>1/</sup>

Tract(s)	Field #(s)	2/ Crop	3/ Previous Crop	4/ Tillage/ Planting System	% Ground (Residue) Cover	Ridge Height (in.)	Row Width (in.)	Row Direction	5/ Strip Width	Time Frame
71	4/5	Corn	Soybean	ST	10					After Planting
71	4/5	Soybean	Corn	ST	45					After Planting

### Footnotes:

1/ Soil loss calculations for this compliance plan are documented in NRCS files.

2/ Crop column is for the crop being planted; it can also be fallow.

3/ Previous crop column is for the prior year's crop (residue). If the field was in fallow the previous year, indicate the fallow type (wheat fallow, corn fallow, etc.)

### 4/ Tillage/Planting System Types:

ST = Spring Mulch Tillage

NONE = Tillage not allowed

\*NT = No Till

FT = Fall Mulch Tillage

SP = Spring Plow

\*STP = Strip Till (Till-Plant)

MT = Mulch Tillage

FP = Fall Plow

RT = Ridge Till

RC = Row Cultivation allowed

\* Row Cultivation is not allowed with continuous No-Till or Strip-Till Systems.

5/ Strip Width is the distance between wind strips, windbreaks, trap strips, wind barriers, contour strips, or contour buffer-strips.

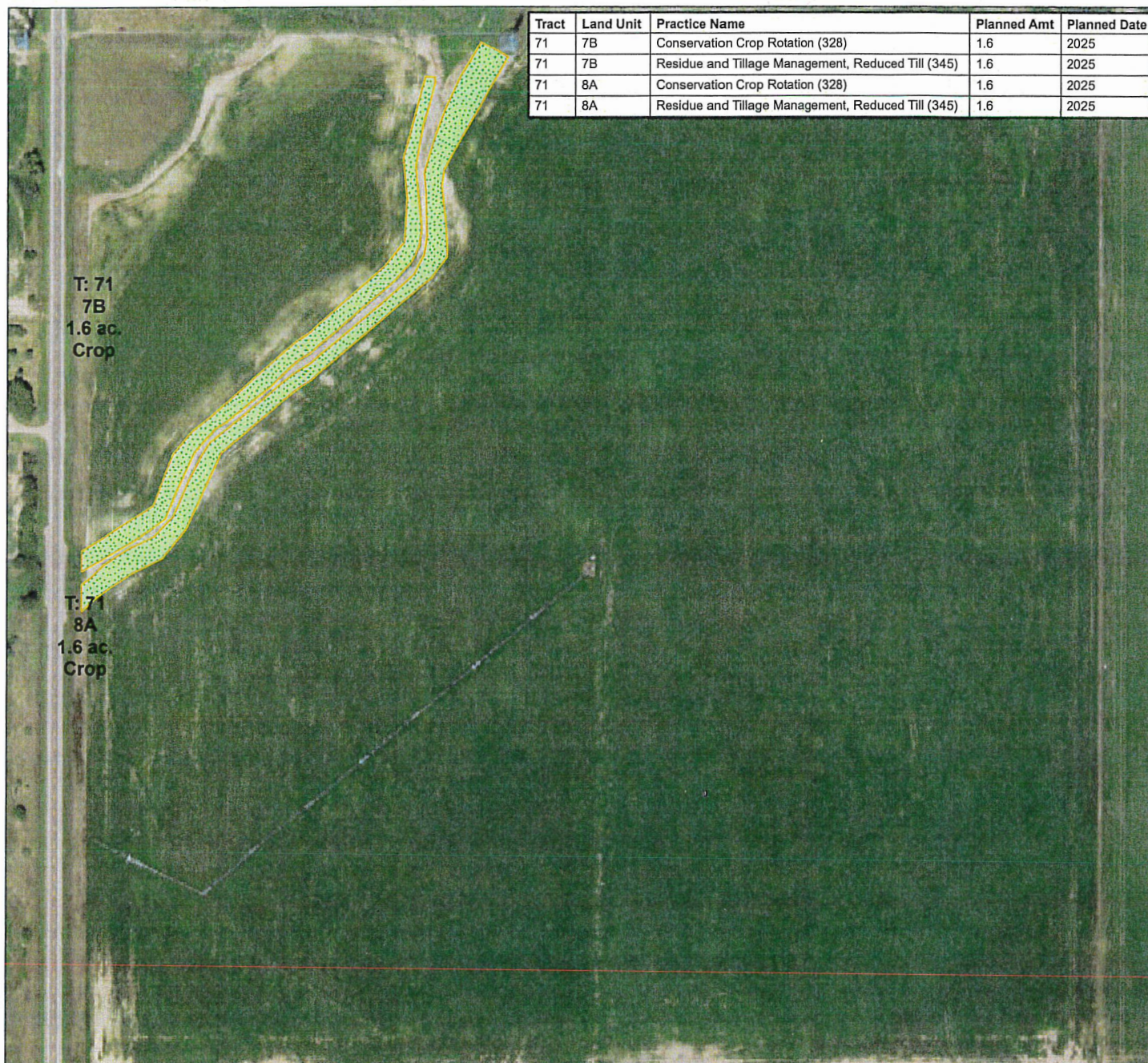


Date: 8/26/2025

# Conservation Plan Map

Client(s): AUSTIN LEE FISHELL  
 Location: SW 1/4 25-7-16  
 Kearney County, Nebraska  
 Approximate Acres: 3.20  
 Land Units: Tract 71, Fields 7B,8A

Assisted By: LISA BERKEYPILE  
 USDA-NRCS  
 MINDEN SERVICE CENTER



Prepared with assistance from USDA-Natural Resources Conservation Service

0 376 Feet

- Conservation Practice Polygons
- Conservation Crop Rotation (328)
  - Residue and Tillage Management, Reduced Till (345)
  - Practice Schedule PLUs





# Crop Rotation / Residue Management / Gully Treatment

Nebraska Conservation Planning Sheet 18

Page 1 of 2

USDA Natural Resources Conservation Service  
Lincoln, NE

Revised April 2017

Name: Koller Farms Inc

Date: 8/4/25

Legal Description: SW ¼ 16-6-14

*W2W2 Little Blue basin*  
*Dry*  
*Parcel 2334.00*  
*Parcel 2333.00*  
Crop Rotation Requirements

*No - culting acres*  
*Parcel 2333.00 = 85.12*

Tract(s)	Field #(s)	Year 1	Year 2	Year 3	Year 4	Year 5	Year 6	Year 7	Year 8
13436	10	Corn	Soybean						

The appropriate crop is listed for each year of the rotation and starts over at Year 1 after the last year. Obtain Nebraska Planning Sheet No. 5 for additional information and allowed crop substitutes.

Other Requirements:

(Ephemeral Gully Control Measures and requirements are documented on Page 2 of this planning sheet)

## Ground Cover/Planting/Tillage Requirements<sup>1/</sup>

Tract(s)	Field #(s)	2/ Crop	3/ Previous Crop	4/ Tillage/ Planting System	% Ground (Residue) Cover	Ridge Height (in.)	Row Width (in.)	Row Direction	5/ Strip Width	Time Frame
13436	10/12	Corn	Soybean	NT	50					After Planting
13436	10/12	Soybean	Corn	ST	20					After Planting

### Footnotes:

1/ Soil loss calculations for this compliance plan are documented in NRCS files.

2/ Crop column is for the crop being planted; it can also be fallow.

3/ Previous crop column is for the prior year's crop (residue). If the field was in fallow the previous year, indicate the fallow type (wheat fallow, corn fallow, etc.)

### 4/ Tillage/Planting System Types:

ST = Spring Mulch Tillage

NONE = Tillage not allowed

\*NT = No Till

FT = Fall Mulch Tillage

SP = Spring Plow

\*STP = Strip Till (Till-Plant)

MT = Mulch Tillage

FP = Fall Plow

RT = Ridge Till

RC = Row Cultivation allowed

\* Row Cultivation is not allowed with continuous No-Till or Strip-Till Systems.

5/ Strip Width is the distance between wind strips, windbreaks, trap strips, wind barriers, contour strips, or contour buffer-strips.



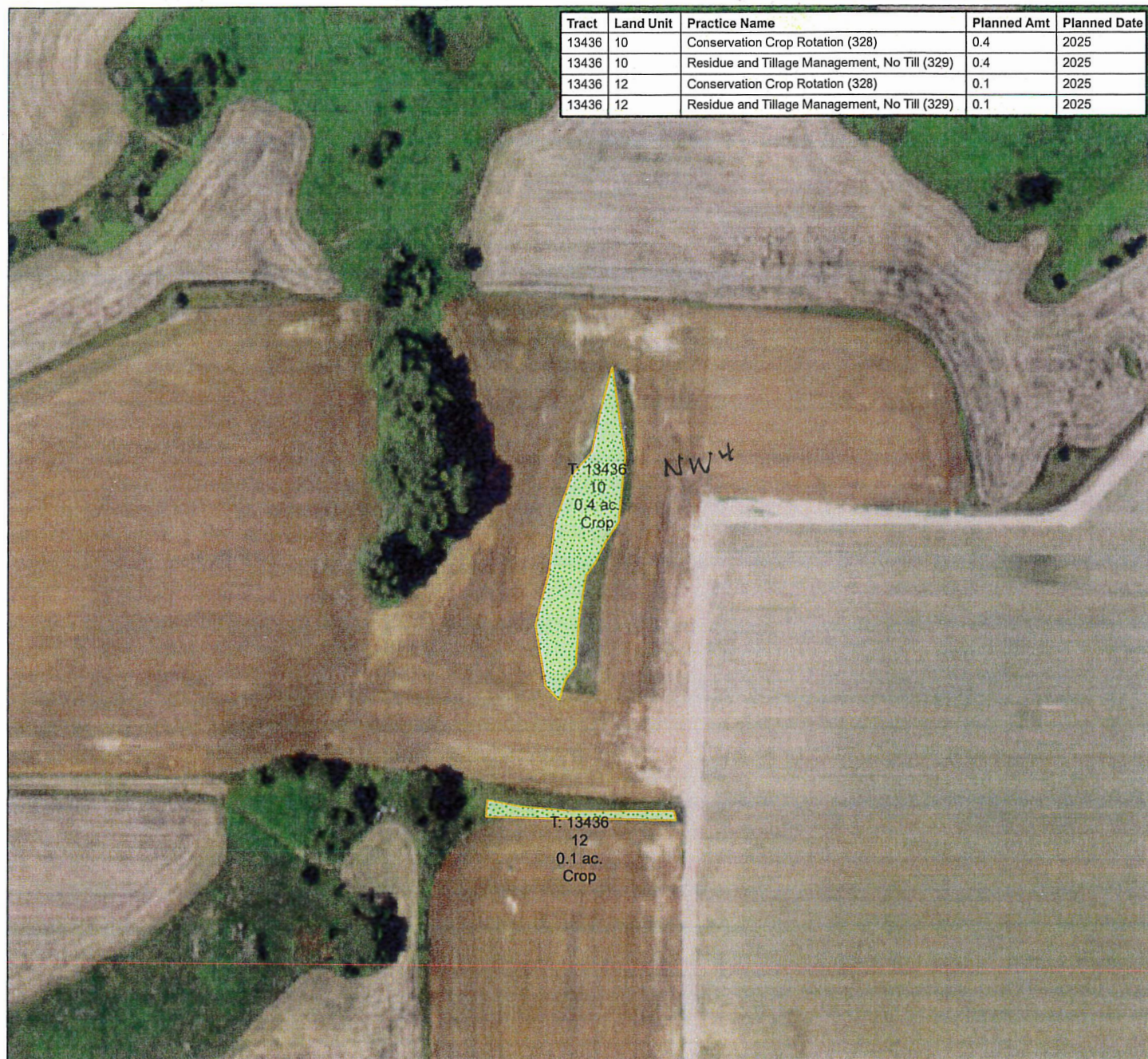
Date: 8/26/2025

# Conservation Plan Map

Client(s): KOLLER FARMS INC  
 Location: SW 1/4 16-6-14  
 Kearney County, Nebraska  
 Approximate Acres: 0.50  
 Land Units: Tract 13436, Fields 10,12

Assisted By: LISA BERKEYPILE  
 USDA-NRCS  
 MINDEN SERVICE CENTER




Tract	Land Unit	Practice Name	Planned Amt	Planned Date
13436	10	Conservation Crop Rotation (328)	0.4	2025
13436	10	Residue and Tillage Management, No Till (329)	0.4	2025
13436	12	Conservation Crop Rotation (328)	0.1	2025
13436	12	Residue and Tillage Management, No Till (329)	0.1	2025



Prepared with assistance from USDA-Natural Resources Conservation Service

0 188  
 Feet

## Conservation Practice Polygons

-  Conservation Crop Rotation (328)
-  Residue and Tillage Management, No-Till (329)
-  Practice Schedule PLUs





# Crop Rotation / Residue Management / Gully Treatment

Nebraska Conservation Planning Sheet 18

Page 1 of 2

USDA Natural Resources Conservation Service

Lincoln, NE

Revised April 2017

Name: William & James Miller JV

Date: 8/4/25

Legal Description: NE 1/4 13-4-14 Franklin Co

Drq

Parcel 2023003.00

No Irrig. Acres

## Crop Rotation Requirements

Tract(s)	Field #(s)	Year 1	Year 2	Year 3	Year 4	Year 5	Year 6	Year 7	Year 8
14547	3	Corn	Soybean	Wheat					

The appropriate crop is listed for each year of the rotation and starts over at Year 1 after the last year. Obtain Nebraska Planning Sheet No. 5 for additional information and allowed crop substitutes.

## Other Requirements:

(Ephemeral Gully Control Measures and requirements are documented on Page 2 of this planning sheet)

## Ground Cover/Planting/Tillage Requirements<sup>1/</sup>

Tract(s)	Field #(s)	2/ Crop	3/ Previous Crop	4/ Tillage/ Planting System	% Ground (Residue) Cover	Ridge Height (in.)	Row Width (in.)	Row Direction	5/ Strip Width	Time Frame
14547	3	Corn	Wheat	ST	25					After Planting
14547	3	Soybean	Corn	ST	20					After Planting
14547	3	Wheat	Soybeans	ST	10					After Planting

### Footnotes:

1/ Soil loss calculations for this compliance plan are documented in NRCS files.

2/ Crop column is for the crop being planted; it can also be fallow.

3/ Previous crop column is for the prior year's crop (residue). If the field was in fallow the previous year, indicate the fallow type (wheat fallow, corn fallow, etc.)

### 4/ Tillage/Planting System Types:

ST = Spring Mulch Tillage

NONE = Tillage not allowed

\*NT = No Till

FT = Fall Mulch Tillage

SP = Spring Plow

\*STP = Strip Till (Till-Plant)

MT = Mulch Tillage

FP = Fall Plow

RT = Ridge Till

RC = Row Cultivation allowed

\* Row Cultivation is not allowed with continuous No-Till or Strip-Till Systems.

5/ Strip Width is the distance between wind strips, windbreaks, trap strips, wind barriers, contour strips, or contour buffer-strips.



## Conservation Plan Map

Client(s): WILLIAM & JAMES MILLER JV  
Location: W 1/2 NE 1/4 13-4-14  
Franklin County, Nebraska  
Approximate Acres: 54.70  
Land Units: Tract 14547, Fields 3

Assisted By: LISA BERKEYPILE  
USDA-NRCS  
MINDEN SERVICE CENTER



Prepared with assistance from USDA-Natural Resources Conservation Service

0 752 Feet

## Conservation Practice Polygons

Conservation Crop Rotation  
(328)



Residue and Tillage  
Management, Reduced Till  
(345)



Practice Schedule PLUs





# Crop Rotation / Residue Management / Gully Treatment

Nebraska Conservation Planning Sheet 18

Page 1 of 2

USDA Natural Resources Conservation Service  
Lincoln, NE

Revised April 2017

Name: Olsen Cattle Company LLC

Date: 8/4/25

Legal Description: N 1/2 1-7-16

## Crop Rotation Requirements

Tract(s)	Field #(s)	Year 1	Year 2	Year 3	Year 4	Year 5	Year 6	Year 7	Year 8
15	8,11,12,15	Corn	Corn						

The appropriate crop is listed for each year of the rotation and starts over at Year 1 after the last year. Obtain Nebraska Planning Sheet No. 5 for additional information and allowed crop substitutes.

Other Requirements: \_\_\_\_\_

(Ephemeral Gully Control Measures and requirements are documented on Page 2 of this planning sheet)

## Ground Cover/Planting/Tillage Requirements<sup>1/</sup>

Tract(s)	Field #(s)	2/ Crop	3/ Previous Crop	4/ Tillage/ Planting System	% Ground (Residue) Cover	Ridge Height (in.)	Row Width (in.)	Row Direction	5/ Strip Width	Time Frame
15	8,11,12,15	Corn	Corn	ST	40					After Planting
15	8,11,12,15	Corn	Corn	ST	40					After Planting

### Footnotes:

1/ Soil loss calculations for this compliance plan are documented in NRCS files.

2/ Crop column is for the crop being planted; it can also be fallow.

3/ Previous crop column is for the prior year's crop (residue). If the field was in fallow the previous year, indicate the fallow type (wheat fallow, corn fallow, etc.)

### 4/ Tillage/Planting System Types:

ST = Spring Mulch Tillage

NONE = Tillage not allowed

\*NT = No Till

FT = Fall Mulch Tillage

SP = Spring Plow

\*STP = Strip Till (Till-Plant)

MT = Mulch Tillage

FP = Fall Plow

RT = Ridge Till

RC = Row Cultivation allowed

\* Row Cultivation is not allowed with continuous No-Till or Strip-Till Systems.

5/ Strip Width is the distance between wind strips, windbreaks, trap strips, wind barriers, contour strips, or contour buffer-strips.



Date: 8/26/2025

## Conservation Plan Map



Client(s): OLSEN CATTLE COMPANY LLC  
Location: N 1/2 1-7-16  
Kearney County, Nebraska  
Approximate Acres: 5.50  
Land Units: Tract 15, Fields 11,12,15,8

Assisted By: LISA BERKEYPILE  
USDA-NRCS  
MINDEN SERVICE CENTER



Prepared with assistance from USDA-Natural Resources Conservation Service

0 752 Feet

- |  |  |
|--|--|
| Conservation Practice Polygons   | Residue and Tillage Management, Reduced Till (345)   |
|  Conservation Crop Rotation (328) |  Practice Schedule PLUs |





# Crop Rotation / Residue Management / Gully Treatment

Nebraska Conservation Planning Sheet 18

Page 1 of 2

USDA Natural Resources Conservation Service  
Lincoln, NE

Revised April 2017

Name: Larry Paitz Date: 8/4/25

Legal Description: NE 1/4 13-7-16 Dry Parcel 2480.00

416.18

## Crop Rotation Requirements

Tract(s)	Field #(s)	Year 1	Year 2	Year 3	Year 4	Year 5	Year 6	Year 7	Year 8
13256	3	Corn	Soybean						

The appropriate crop is listed for each year of the rotation and starts over at Year 1 after the last year. Obtain Nebraska Planning Sheet No. 5 for additional information and allowed crop substitutes.

## Other Requirements:

(Ephemeral Gully Control Measures and requirements are documented on Page 2 of this planning sheet)

## Ground Cover/Planting/Tillage Requirements<sup>1/</sup>

Tract(s)	Field #(s)	2/ Crop	3/ Previous Crop	4/ Tillage/ Planting System	% Ground (Residue) Cover	Ridge Height (in.)	Row Width (in.)	Row Direction	5/ Strip Width	Time Frame
13265	3	Corn	Soybean	NT	40					After Planting
13265	3	Soybean	Corn	NT	55					After Planting

### Footnotes:

1/ Soil loss calculations for this compliance plan are documented in NRCS files.

2/ Crop column is for the crop being planted; it can also be fallow.

3/ Previous crop column is for the prior year's crop (residue). If the field was in fallow the previous year, indicate the fallow type (wheat fallow, corn fallow, etc.)

### 4/ Tillage/Planting System Types:

ST = Spring Mulch Tillage

FT = Fall Mulch Tillage

MT = Mulch Tillage

NONE = Tillage not allowed

SP = Spring Plow

FP = Fall Plow

\*NT = No Till

\*STP = Strip Till (Till-Plant)

RT = Ridge Till

RC = Row Cultivation allowed

\* Row Cultivation is not allowed with continuous No-Till or Strip-Till Systems.

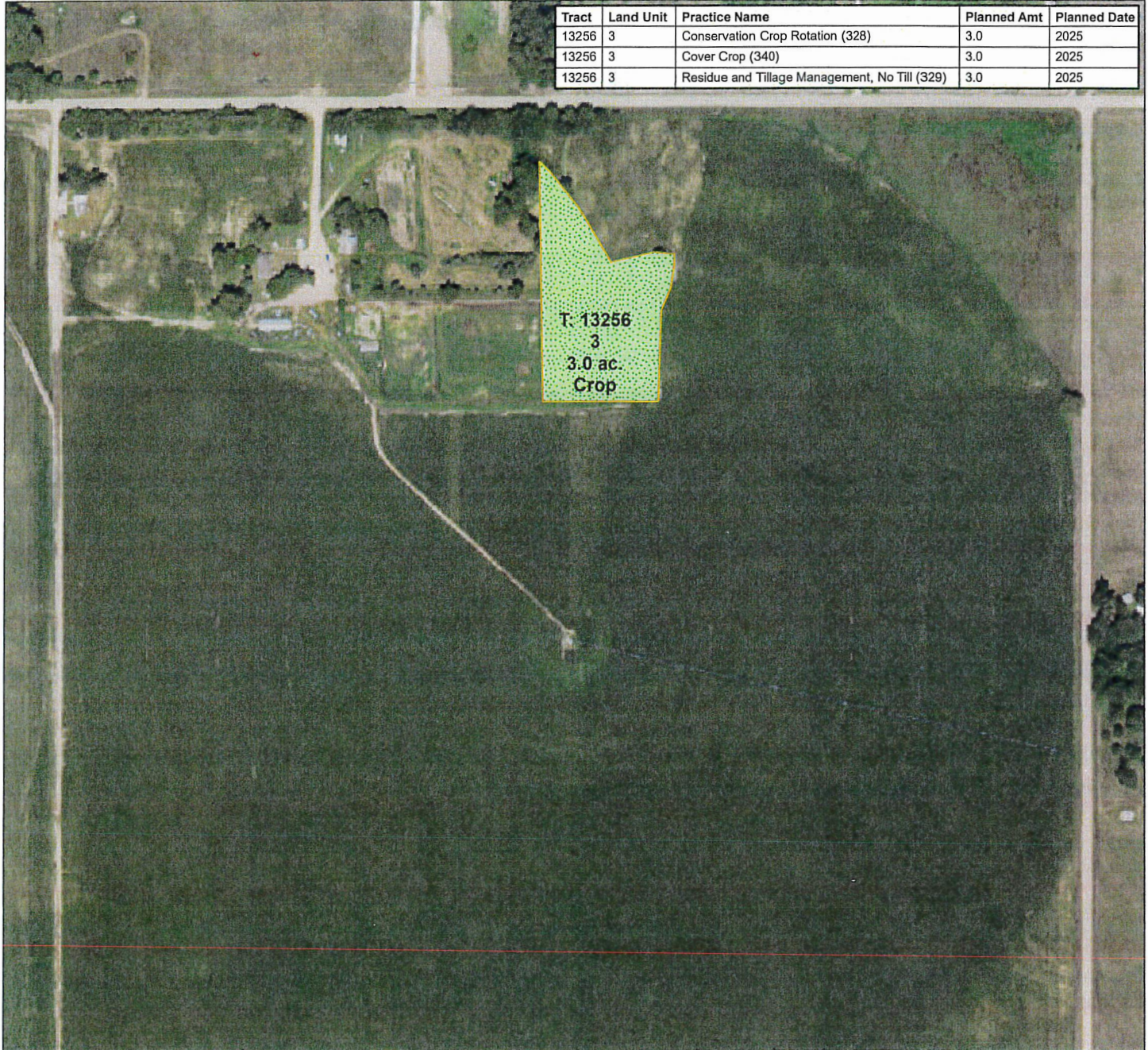
5/ Strip Width is the distance between wind strips, windbreaks, trap strips, wind barriers, contour strips, or contour buffer-strips.



# Conservation Plan Map

Client(s): LARRY E PAITZ  
Location: NE 1/4 13-7-16  
Kearney County, Nebraska  
Approximate Acres: 3.00  
Land Units: Tract 13256, Fields 3

Assisted By: LISA BERKEYPILE  
USDA-NRCS  
MINDEN SERVICE CENTER



Tract	Land Unit	Practice Name	Planned Amt	Planned Date
13256	3	Conservation Crop Rotation (328)	3.0	2025
13256	3	Cover Crop (340)	3.0	2025
13256	3	Residue and Tillage Management, No Till (329)	3.0	2025

Prepared with assistance from USDA-Natural Resources Conservation Service

0 376  
Feet

- Conservation Practice Polygons
- Conservation Crop Rotation (328)
  - Cover Crop (340)
  - Residue and Tillage Management, No-Till (329)
  - Practice Schedule PLUs





# Crop Rotation / Residue Management / Gully Treatment

Nebraska Conservation Planning Sheet 18

Page 1 of 2

USDA Natural Resources Conservation Service  
Lincoln, NE

Revised April 2017

Name: Fort Kearney Consolidated

Date: 8/4/25

Legal Description: N ½ SE ¼ 5-7-14

*Platte Basin  
Irr.*

*314800*

*213.33 cira*

## Crop Rotation Requirements

Tract(s)	Field #(s)	Year 1	Year 2	Year 3	Year 4	Year 5	Year 6	Year 7	Year 8
397	4	Corn	Corn						

The appropriate crop is listed for each year of the rotation and starts over at Year 1 after the last year. Obtain Nebraska Planning Sheet No. 5 for additional information and allowed crop substitutes.

## Other Requirements:

(Ephemeral Gully Control Measures and requirements are documented on Page 2 of this planning sheet)

## Ground Cover/Planting/Tillage Requirements<sup>1/</sup>

Tract(s)	Field #(s)	2/ Crop	3/ Previous Crop	4/ Tillage/ Planting System	% Ground (Residue) Cover	Ridge Height (in.)	Row Width (in.)	Row Direction	5/ Strip Width	Time Frame
397	4	Corn	Corn	ST	40					After Planting
397	4	Corn	Corn	ST	40					After Planting

### Footnotes:

1/ Soil loss calculations for this compliance plan are documented in NRCS files.

2/ Crop column is for the crop being planted; it can also be fallow.

3/ Previous crop column is for the prior year's crop (residue). If the field was in fallow the previous year, indicate the fallow type (wheat fallow, corn fallow, etc.)

### 4/ Tillage/Planting System Types:

ST = Spring Mulch Tillage

NONE = Tillage not allowed

\*NT = No Till

FT = Fall Mulch Tillage

SP = Spring Plow

\*STP = Strip Till (Till-Plant)

MT = Mulch Tillage

FP = Fall Plow

RT = Ridge Till

RC = Row Cultivation allowed

\* Row Cultivation is not allowed with continuous No-Till or Strip-Till Systems.

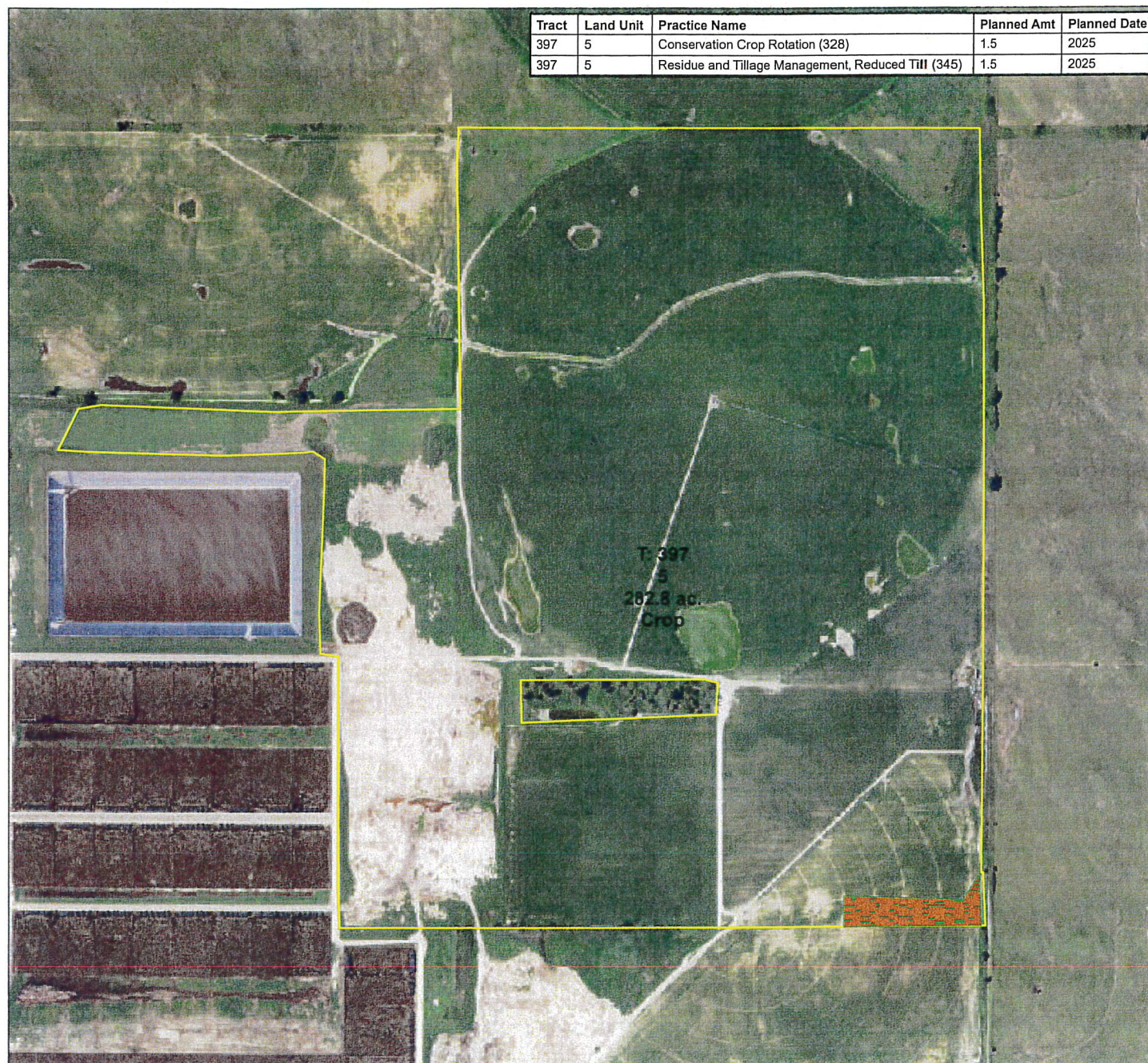
5/ Strip Width is the distance between wind strips, windbreaks, trap strips, wind barriers, contour strips, or contour buffer-strips.



# Conservation Plan Map

Client(s): FORT KEARNY CONSOLIDATED  
 Location: N 1/2 SE 1/4 5-7-14  
 Kearney County, Nebraska  
 Approximate Acres: 282.80  
 Land Units: Tract 397, Fields 5

Assisted By: LISA BERKEYPILE  
 USDA-NRCS  
 MINDEN SERVICE CENTER



Prepared with assistance from USDA-Natural Resources Conservation Service

0 752  
 Feet

- Conservation Practice Polygons
- Conservation Crop Rotation (328)
  - Residue and Tillage Management, Reduced Till (345)
  - Practice Schedule PLUs





# Crop Rotation / Residue Management / Gully Treatment

Nebraska Conservation Planning Sheet 18

Page 1 of 2

USDA Natural Resources Conservation Service

Lincoln, NE

Revised April 2017

Name: Fort Kearney Consolidated Date: 8/4/25

Legal Description: S ½ SW ¼ 32-8-14 *Make Irr.* *Parcel 352100*

## Crop Rotation Requirements

*402.51 cia*

Tract(s)	Field #(s)	Year 1	Year 2	Year 3	Year 4	Year 5	Year 6	Year 7	Year 8
14287	22	Corn	Corn						

The appropriate crop is listed for each year of the rotation and starts over at Year 1 after the last year. Obtain Nebraska Planning Sheet No. 5 for additional information and allowed crop substitutes.

Other Requirements: \_\_\_\_\_  
(Ephemeral Gully Control Measures and requirements are documented on Page 2 of this planning sheet)

## Ground Cover/Planting/Tillage Requirements<sup>1/</sup>

Tract(s)	Field #(s)	2/ Crop	3/ Previous Crop	4/ Tillage/ Planting System	% Ground (Residue) Cover	Ridge Height (in.)	Row Width (in.)	Row Direction	5/ Strip Width	Time Frame
14287	22	Corn	Corn	NT	50					After Planting
14287	22	Corn	Corn	NT	50					After Planting

### Footnotes:

1/ Soil loss calculations for this compliance plan are documented in NRCS files.

2/ Crop column is for the crop being planted; it can also be fallow.

3/ Previous crop column is for the prior year's crop (residue). If the field was in fallow the previous year, indicate the fallow type (wheat fallow, corn fallow, etc.)

### 4/ Tillage/Planting System Types:

ST = Spring Mulch Tillage

FT = Fall Mulch Tillage

MT = Mulch Tillage

NONE = Tillage not allowed

SP = Spring Plow

FP = Fall Plow

\*NT = No Till

\*STP = Strip Till (Till-Plant)

RT = Ridge Till

RC = Row Cultivation allowed

\* Row Cultivation is not allowed with continuous No-Till or Strip-Till Systems.

5/ Strip Width is the distance between wind strips, windbreaks, trap strips, wind barriers, contour strips, or contour buffer-strips.



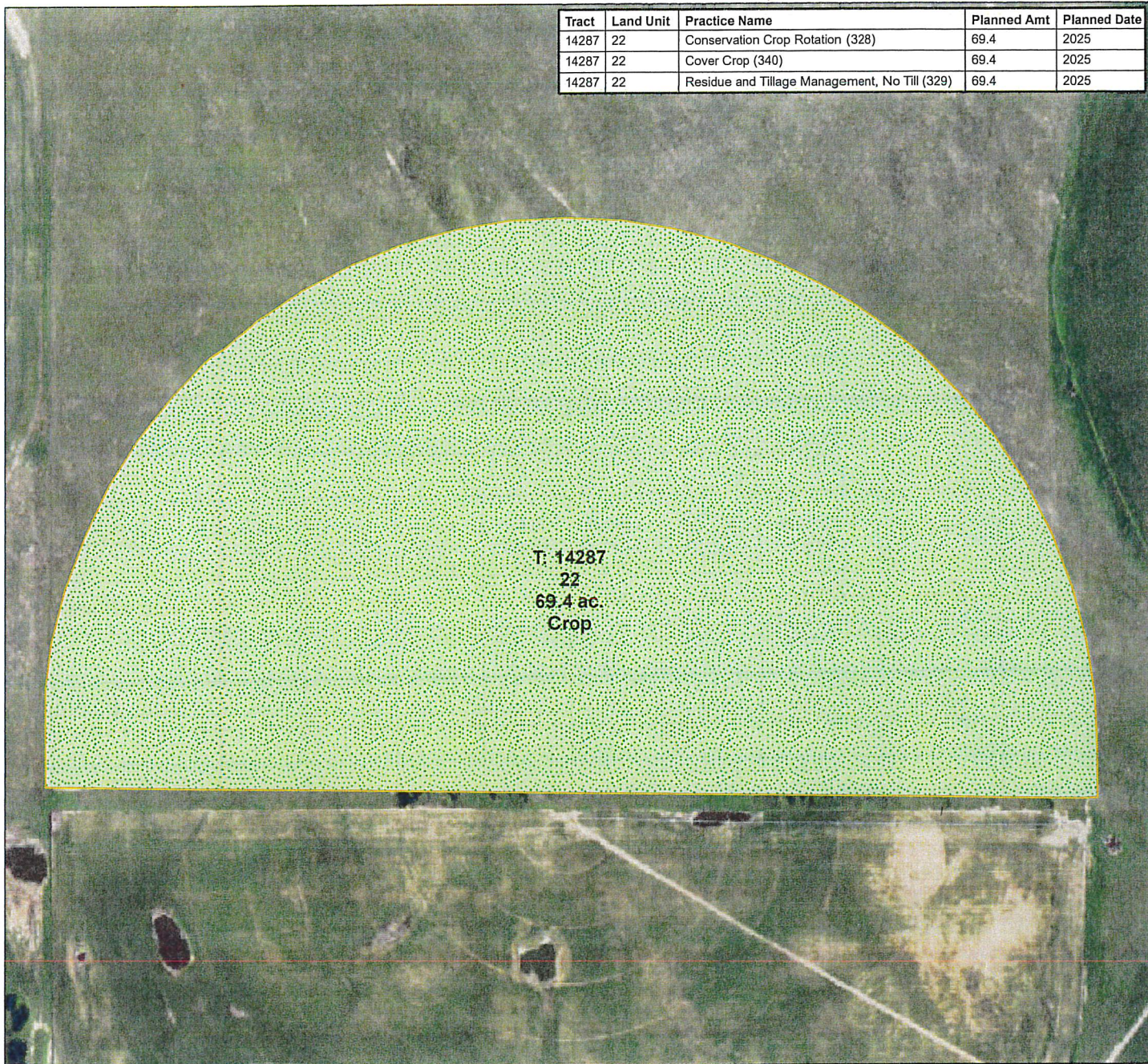
Date: 9/2/2025

# Conservation Plan Map

Client(s): FORT KEARNY CONSOLIDATED  
 Location: S 1/2 SW 1/4 32-8-14  
 Kearney County, Nebraska  
 Approximate Acres: 69.40  
 Land Units: Tract 14287, Fields 22

Assisted By: LISA BERKEYPILE  
 USDA-NRCS  
 MINDEN SERVICE CENTER

Tract	Land Unit	Practice Name	Planned Amt	Planned Date
14287	22	Conservation Crop Rotation (328)	69.4	2025
14287	22	Cover Crop (340)	69.4	2025
14287	22	Residue and Tillage Management, No Till (329)	69.4	2025



Prepared with assistance from USDA-Natural Resources Conservation Service

0 376 Feet

- Conservation Practice Polygons
- Conservation Crop Rotation (328)
  - Cover Crop (340)
  - Residue and Tillage Management, No-Till (329)
  - Practice Schedule PLUs





# Crop Rotation / Residue Management / Gully Treatment

Nebraska Conservation Planning Sheet 18

Page 1 of 2

USDA Natural Resources Conservation Service  
Lincoln, NE

Revised April 2017

Name: Brandon Jameson

Date: 8/5/25

Legal Description: NE 1/4 19-5-14

*Republican  
basin*

*Parcel 127100*

*129.22 det. acres  
img*

## Crop Rotation Requirements

Tract(s)	Field #(s)	Year 1	Year 2	Year 3	Year 4	Year 5	Year 6	Year 7	Year 8
14736	6	Corn	Soybean						

The appropriate crop is listed for each year of the rotation and starts over at Year 1 after the last year. Obtain Nebraska Planning Sheet No. 5 for additional information and allowed crop substitutes.

Other Requirements: \_\_\_\_\_

(Ephemeral Gully Control Measures and requirements are documented on Page 2 of this planning sheet)

## Ground Cover/Planting/Tillage Requirements<sup>1/</sup>

Tract(s)	Field #(s)	2/ Crop	3/ Previous Crop	4/ Tillage/ Planting System	% Ground (Residue) Cover	Ridge Height (in.)	Row Width (in.)	Row Direction	5/ Strip Width	Time Frame
14736	6 / 8	Corn	Soybeans	NT	35					After Planting
14736	6 / 8	Soybeans	Corn	ST	45					After Planting

### Footnotes:

1/ Soil loss calculations for this compliance plan are documented in NRCS files.

2/ Crop column is for the crop being planted; it can also be fallow.

3/ Previous crop column is for the prior year's crop (residue). If the field was in fallow the previous year, indicate the fallow type (wheat fallow, corn fallow, etc.)

### 4/ Tillage/Planting System Types:

ST = Spring Mulch Tillage

NONE = Tillage not allowed

\*NT = No Till

FT = Fall Mulch Tillage

SP = Spring Plow

\*STP = Strip Till (Till-Plant)

MT = Mulch Tillage

FP = Fall Plow

RT = Ridge Till

RC = Row Cultivation allowed

\* Row Cultivation is not allowed with continuous No-Till or Strip-Till Systems.

5/ Strip Width is the distance between wind strips, windbreaks, trap strips, wind barriers, contour strips, or contour buffer-strips.

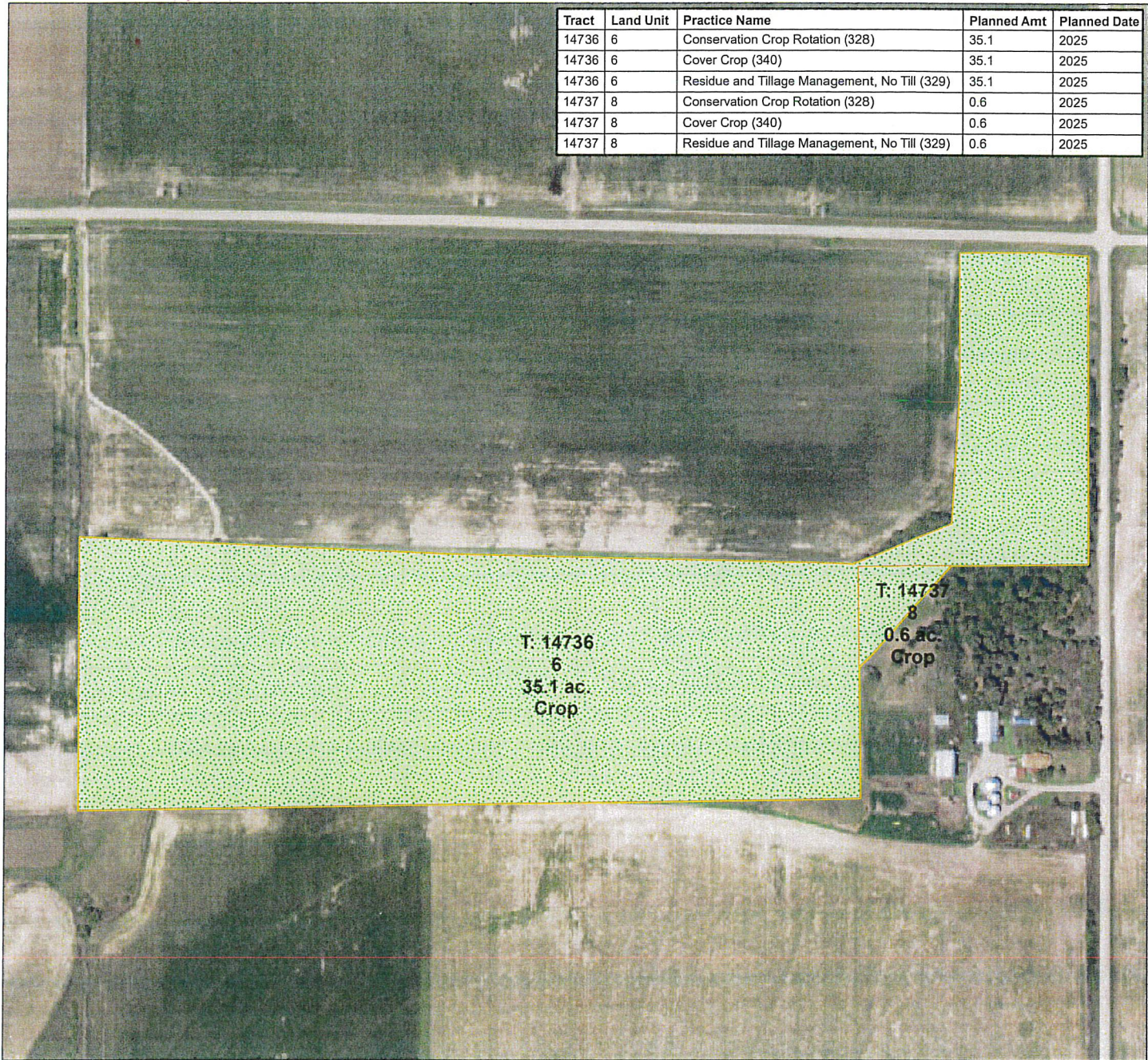


# Conservation Plan Map

Client(s): BRANDON J JAMESON  
Location: N 1/2 NE 1/4 24-5-14  
Kearney County, Nebraska  
Approximate Acres: 35.70  
Land Units: Tract 14736, Fields 6 Tract 14737, Fields 8

Assisted By: LISA BERKEYPILE  
USDA-NRCS  
MINDEN SERVICE CENTER

Tract	Land Unit	Practice Name	Planned Amt	Planned Date
14736	6	Conservation Crop Rotation (328)	35.1	2025
14736	6	Cover Crop (340)	35.1	2025
14736	6	Residue and Tillage Management, No Till (329)	35.1	2025
14737	8	Conservation Crop Rotation (328)	0.6	2025
14737	8	Cover Crop (340)	0.6	2025
14737	8	Residue and Tillage Management, No Till (329)	0.6	2025



Prepared with assistance from USDA-Natural Resources Conservation Service

0 376 Feet

Conservation Practice Polygons

- Conservation Crop Rotation (328)
- Cover Crop (340)
- Residue and Tillage Management, No-Till (329)
- Practice Schedule PLUs





# Crop Rotation / Residue Management / Gully Treatment

Nebraska Conservation Planning Sheet 18

Page 1 of 2

USDA Natural Resources Conservation Service  
Lincoln, NE

Revised April 2017

Name: Brandon Jameson

Date: 8/5/25

Legal Description: NE 1/4 19-5-14

*Parcel 127100*

*129.22 ac in  
area*

## Crop Rotation Requirements

Tract(s)	Field #(s)	Year 1	Year 2	Year 3	Year 4	Year 5	Year 6	Year 7	Year 8
14736	6	Corn	Soybean						

The appropriate crop is listed for each year of the rotation and starts over at Year 1 after the last year. Obtain Nebraska Planning Sheet No. 5 for additional information and allowed crop substitutes.

## Other Requirements:

(Ephemeral Gully Control Measures and requirements are documented on Page 2 of this planning sheet)

## Ground Cover/Planting/Tillage Requirements<sup>1/</sup>

Tract(s)	Field #(s)	2/ Crop	3/ Previous Crop	4/ Tillage/ Planting System	% Ground (Residue) Cover	Ridge Height (in.)	Row Width (in.)	Row Direction	5/ Strip Width	Time Frame
14736	6 / 8	Corn	Soybeans	NT	35					After Planting
14736	6 / 8	Soybeans	Corn	ST	45					After Planting

### Footnotes:

1/ Soil loss calculations for this compliance plan are documented in NRCS files.

2/ Crop column is for the crop being planted; it can also be fallow.

3/ Previous crop column is for the prior year's crop (residue). If the field was in fallow the previous year, indicate the fallow type (wheat fallow, corn fallow, etc.)

### 4/ Tillage/Planting System Types:

ST = Spring Mulch Tillage

NONE = Tillage not allowed

\*NT = No Till

FT = Fall Mulch Tillage

SP = Spring Plow

\*STP = Strip Till (Till-Plant)

MT = Mulch Tillage

FP = Fall Plow

RT = Ridge Till

RC = Row Cultivation allowed

\* Row Cultivation is not allowed with continuous No-Till or Strip-Till Systems.

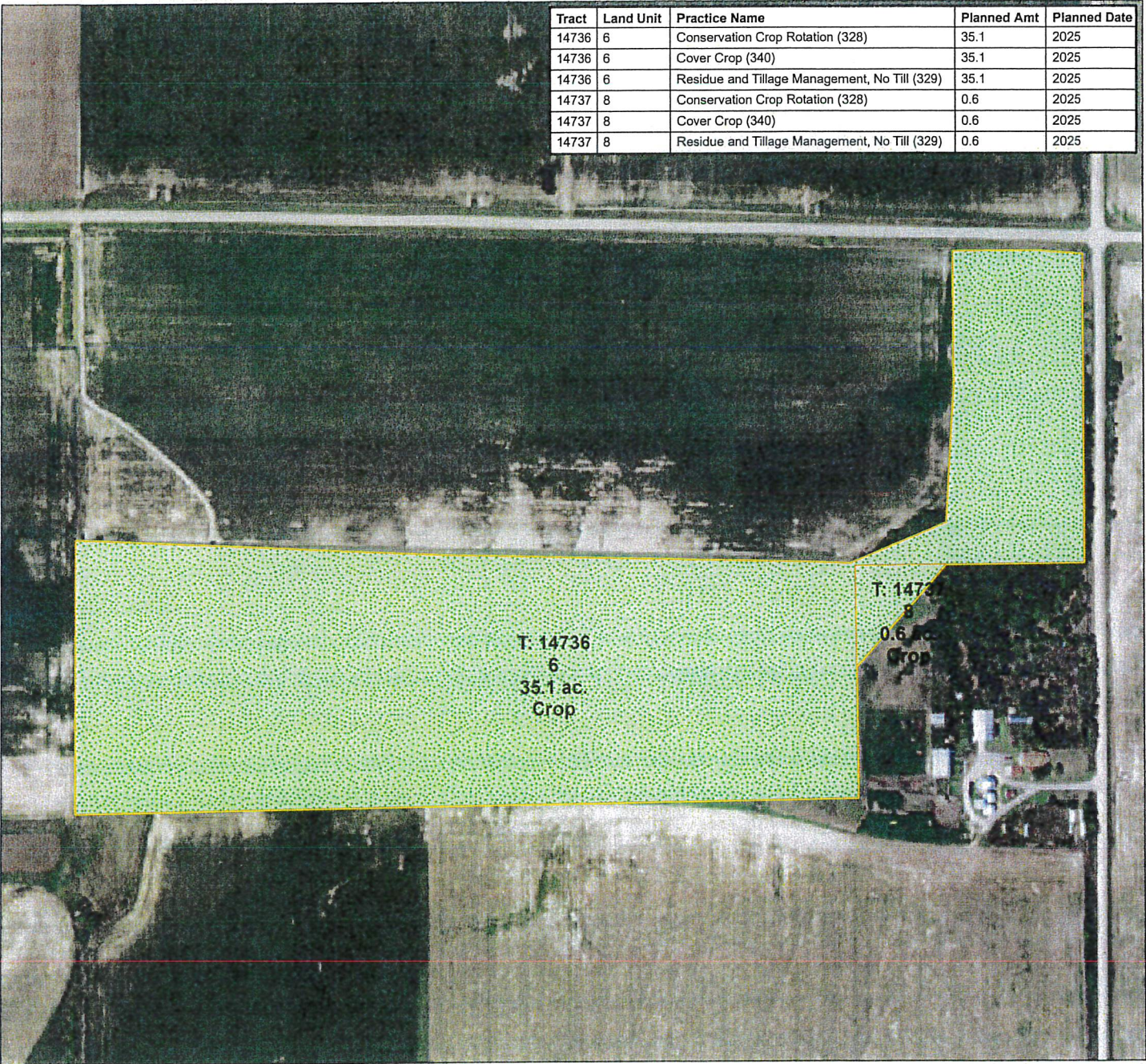
5/ Strip Width is the distance between wind strips, windbreaks, trap strips, wind barriers, contour strips, or contour buffer-strips.



# Conservation Plan Map

Client(s): BRANDON J JAMESON  
Location: N 1/2 NE 1/4 24-5-14  
Kearney County, Nebraska  
Approximate Acres: 35.70  
Land Units: Tract 14736, Fields 6 Tract 14737, Fields 8

Assisted By: LISA BERKEYPILE  
USDA-NRCS  
MINDEN SERVICE CENTER



Prepared with assistance from USDA-Natural Resources Conservation Service



Conservation Practice Polygons

Conservation Crop Rotation (328)

Cover Crop (340)

Residue and Tillage Management, No-Till (329)

Practice Schedule PLUs





# Crop Rotation / Residue Management / Gully Treatment

Nebraska Conservation Planning Sheet 18

Page 1 of 2

USDA Natural Resources Conservation Service

Lincoln, NE

Revised April 2017

Name: Brent Bergstrom

Date: 6/24/2024

Legal Description: SW ¼ 18-5-16

Republican  
base

Parcel - 168600

## Crop Rotation Requirements

136.912 ac. net irrig  
acres

Tract(s)	Field #(s)	Year 1	Year 2	Year 3	Year 4	Year 5	Year 6	Year 7	Year 8
1405	3	Corn	Soybean						

The appropriate crop is listed for each year of the rotation and starts over at Year 1 after the last year. Obtain Nebraska Planning Sheet No. 5 for additional information and allowed crop substitutes.

Other Requirements:

(Ephemeral Gully Control Measures and requirements are documented on Page 2 of this planning sheet)

## Ground Cover/Planting/Tillage Requirements<sup>1/</sup>

Tract(s)	Field #(s)	2/ Crop	3/ Previous Crop	4/ Tillage/ Planting System	% Ground (Residue) Cover	Ridge Height (in.)	Row Width (in.)	Row Direction	5/ Strip Width	Time Frame
1405	3	Corn	Soybean	ST	10					After Planting
1405	3	Soybean	Corn	ST	25					After Planting

### Footnotes:

1/ Soil loss calculations for this compliance plan are documented in NRCS files.

2/ Crop column is for the crop being planted; it can also be fallow.

3/ Previous crop column is for the prior year's crop (residue). If the field was in fallow the previous year, indicate the fallow type (wheat fallow, corn fallow, etc.)

### 4/ Tillage/Planting System Types:

ST = Spring Mulch Tillage

FT = Fall Mulch Tillage

MT = Mulch Tillage

NONE = Tillage not allowed

SP = Spring Plow

FP = Fall Plow

\*NT = No Till

\*STP = Strip Till (Till-Plant)

RT = Ridge Till

RC = Row Cultivation allowed

\* Row Cultivation is not allowed with continuous No-Till or Strip-Till Systems.

5/ Strip Width is the distance between wind strips, windbreaks, trap strips, wind barriers, contour strips, or contour buffer-strips.

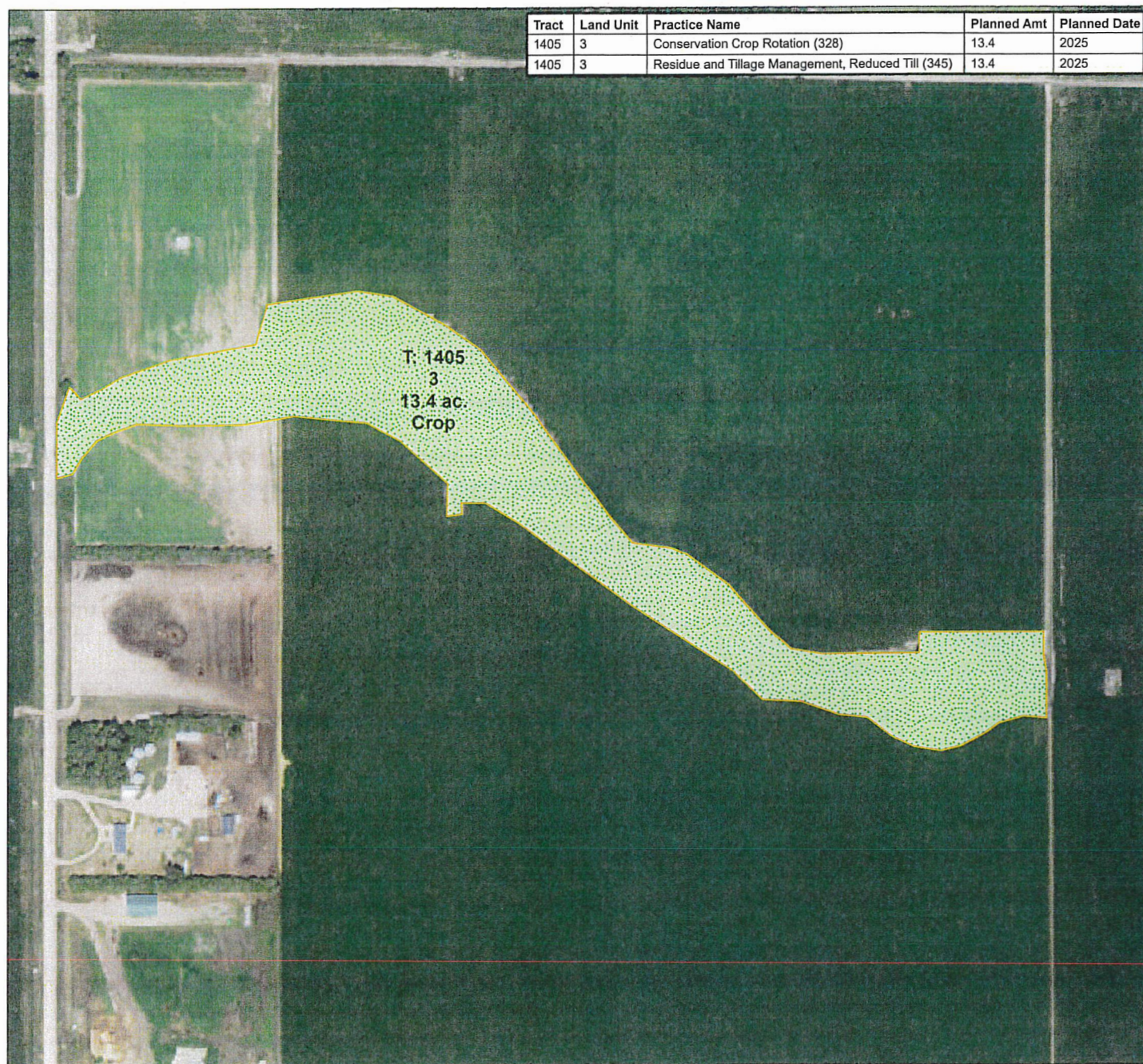


Date: 9/8/2025

## Conservation Plan Map

Client(s): BRENT BERGSTROM  
Location: SW 1/4 18-5-16  
Phelps County, Nebraska  
Approximate Acres: 13.40  
Land Units: Tract 1405, Fields 3

Assisted By: LISA BERKEYPILE  
USDA-NRCS  
HOLDREGE SERVICE CENTER



0 376  
Feet

Prepared with assistance from USDA-Natural Resources Conservation Service

Conservation Practice Polygons  
Conservation Crop Rotation (328)



Residue and Tillage Management, Reduced Till (345)



Practice Schedule PLUs



## NOTICE OF SPECIAL HEARING TO SET FINAL TAX REQUEST

PUBLIC NOTICE is hereby given, in compliance with the provisions of State Statute Section 77-1632, that the governing body will meet on the 17 day of September 2025, at 1:30 o'clock P.M., at Tri-Basin NRD, Holdrege, NE for the purpose of hearing support, opposition, criticism, suggestions or observations of taxpayers relating to setting the final tax request.

	2024	2025	Change
Operating Budget	2,185,583.68	3,008,783.49	38%
Property Tax Request	\$ 1,806,117.80	\$ 1,861,847.45	3%
Valuation	6,290,937,330	7,136,557,315	13%
Tax Rate	0.028710	0.026089	-9%
Tax Rate if Prior Tax Request was at Current Valuation	0.025308		