



— BUREAU OF —
RECLAMATION

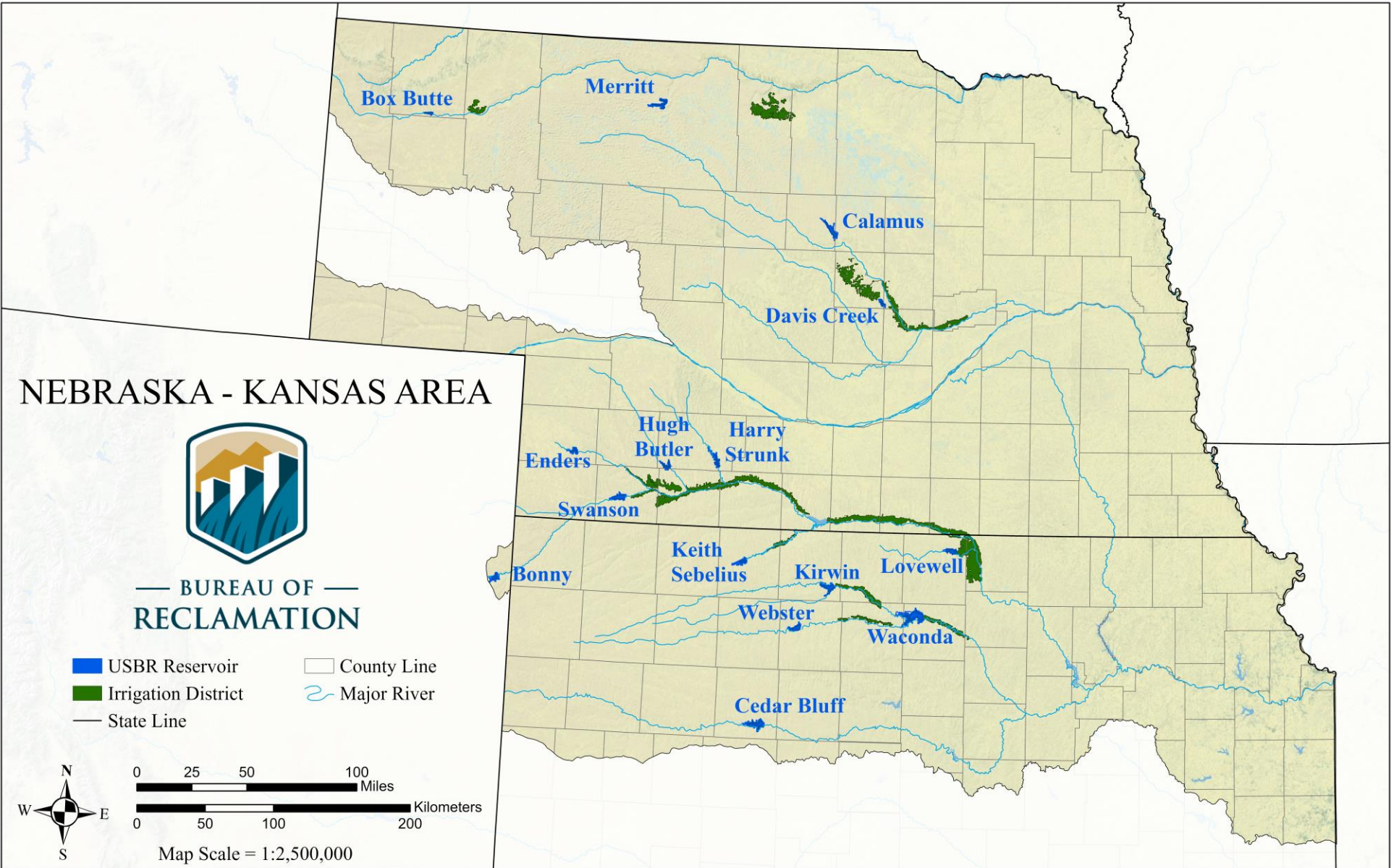
Nebraska - Kansas Area Office

Craig Scott

Manager, Engineering Division

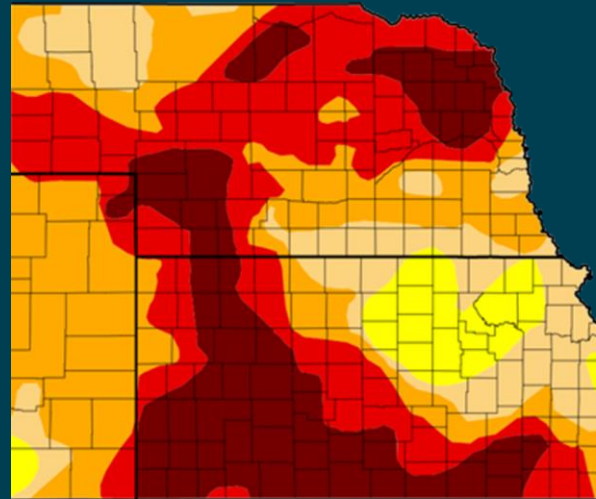
- Republican River Operations
 - 2023 Review
- 2024 Projections
 - HCL Water Supply Estimate



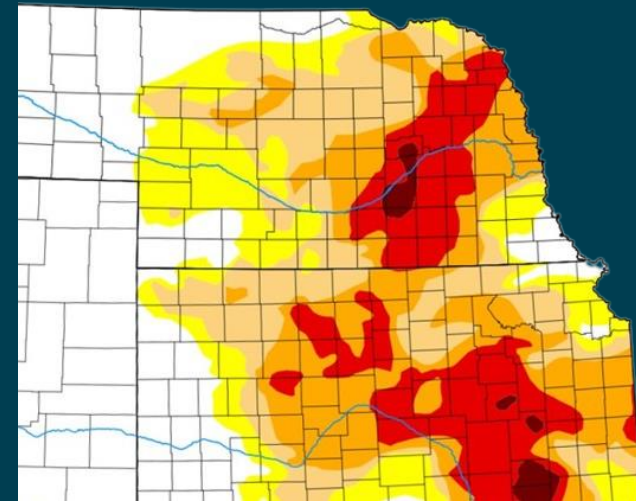


Relief from Drought

- **Wet in the West, Dry in the East:** drought in Western Nebraska & Kansas ends after record breaking May precipitation events are followed by wet summer
- **Low Temps but High Demands:** NKAO projects diverted over 468,000 AF of project water despite wet, cool summer
- **Modernizing Operations Equipment:** new satellite communications devices, radar stage measurement devices installed, testing automated weather monitoring equipment



2022



2023

- **Collaborating with Partners:** 9 irrigation districts delivered project water to 225,000 acres, coordinated operations with USACE, and assisted NE, CO, & KS with interstate compact compliance



NKAO Reservoir Precipitation

	Average (in)	2023 (in)
BONNY	17.14	22.07
SWANSON	19.59	24.67
ENDERS	18.83	22.09
HUGH BUTLER	19.24	22.14
HARRY STRUNK	20.56	22.96
KEITH SEBELIUS	24.26	28.81
HARLAN COUNTY	22.69	28.30
LOVEWELL	26.93	24.96
KIRWIN	23.28	24.10
WEBSTER	23.06	20.39
CEDAR BLUFF	20.45	19.43
WACONDA	24.74	18.84
BOX BUTTE	16.73	23.08
MERRITT	20.65	26.18
CALAMUS	24.03	26.38
DAVIS CREEK	24.90	32.31

15" more than 2022

Lowest since 2000

17.4" more than 2022



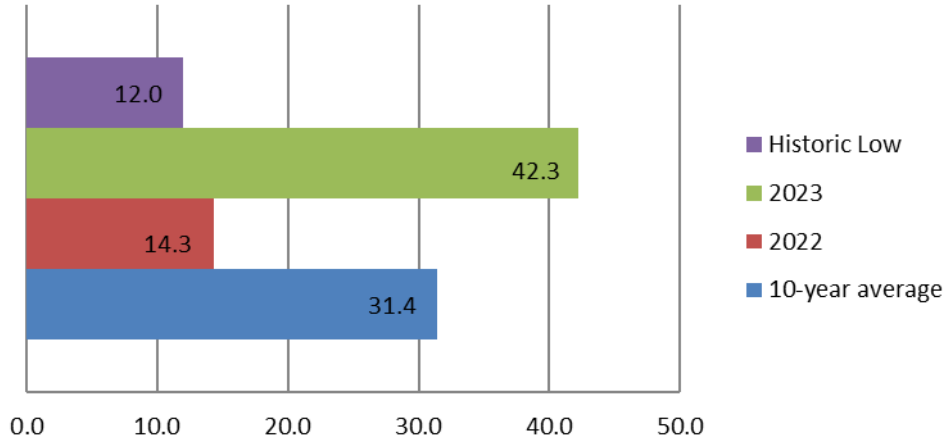
NKAO Reservoir Content

As of December 31, 2023

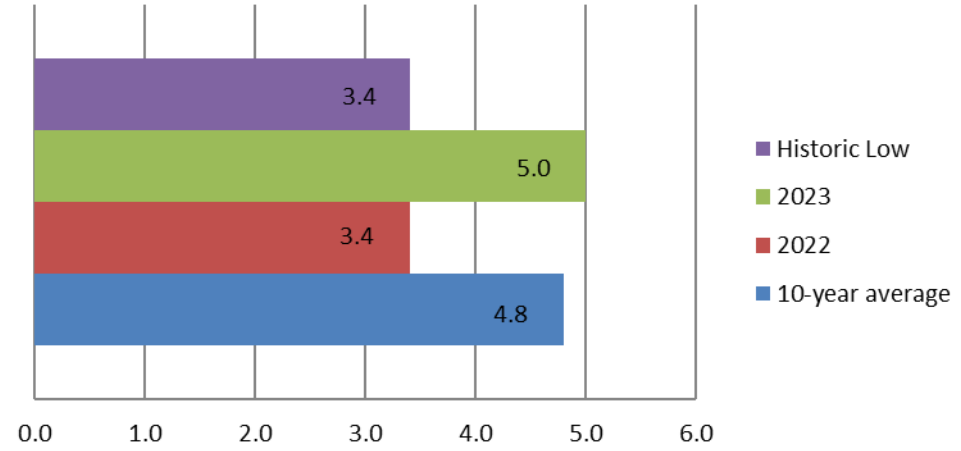
	Elevation (ft)	Content (AF)	Percent of Full (%)	Change in Storage (AF)
SWANSON	2738.64	55,612	50%	+31,139
ENDERS	3080.75	7,948	19%	+1,403
HUGH BUTLER	2566.63	16,306	45%	+5,320
HARRY STRUNK	2361.96	27,835	80%	+8,670
KEITH SEBELIUS	2294.55	17,260	50%	+4,938
HARLAN COUNTY	1937.98	219,693	70%	-5,777
LOVEWELL	1580.13	27,797	78%	+4,094



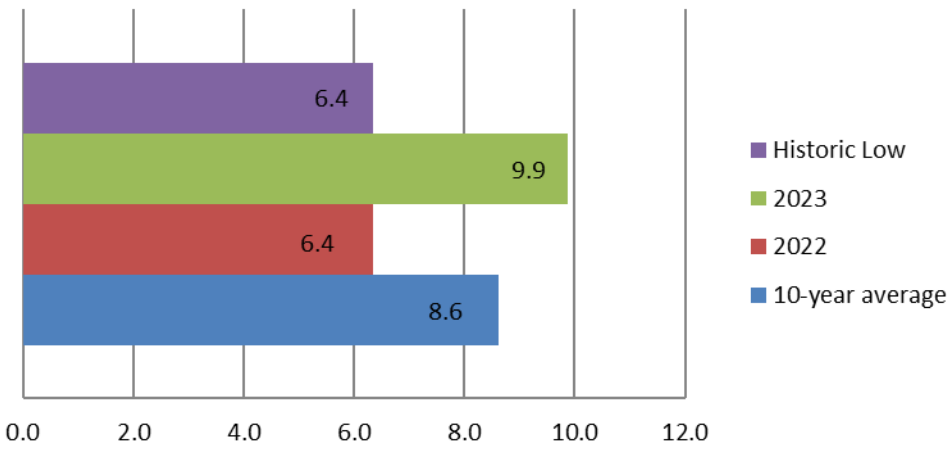
Swanson Inflow (thousands of AF)



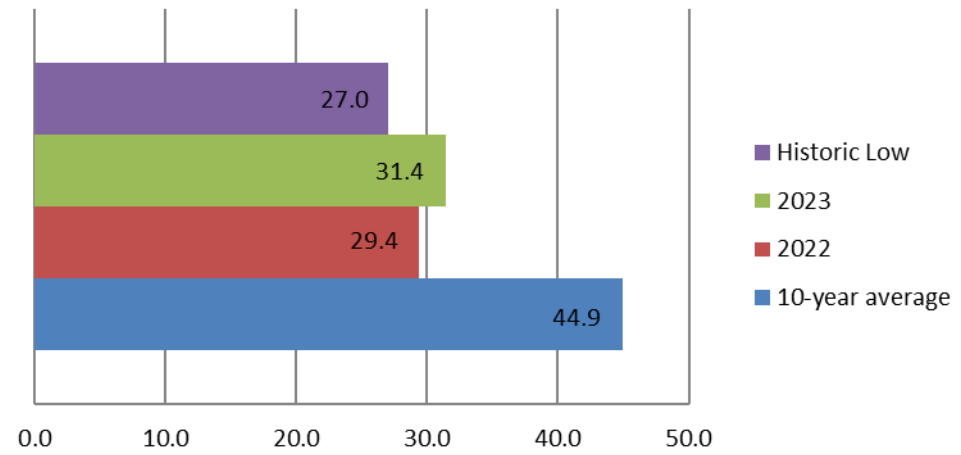
Enders Inflow (thousands of AF)



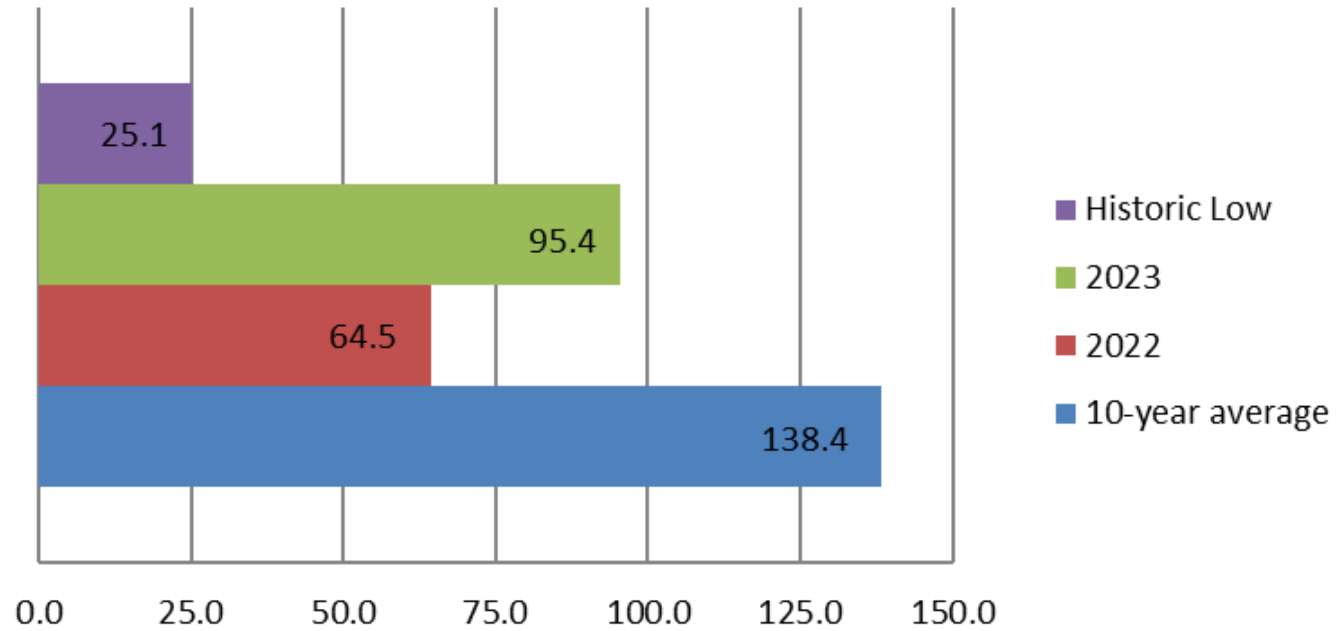
Hugh Butler Inflow (thousands of AF)



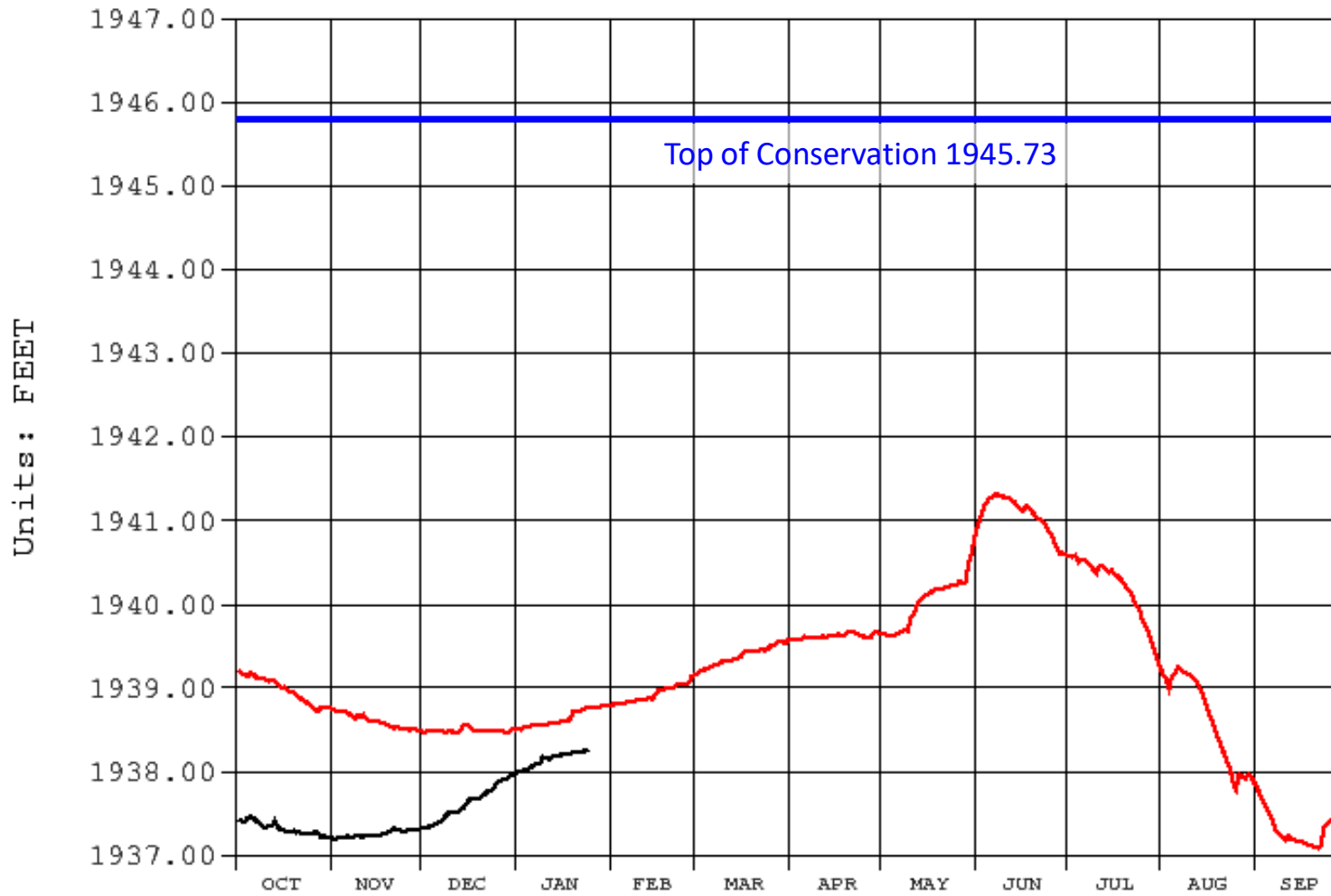
Harry Strunk Inflow (thousands of AF)



Harlan County Inflow (thousands of AF)



Archive Data From 1-OCT Through 30-SEP
Plotted 01/25/2024 06:44 (Provisional Data Subject to Revision)

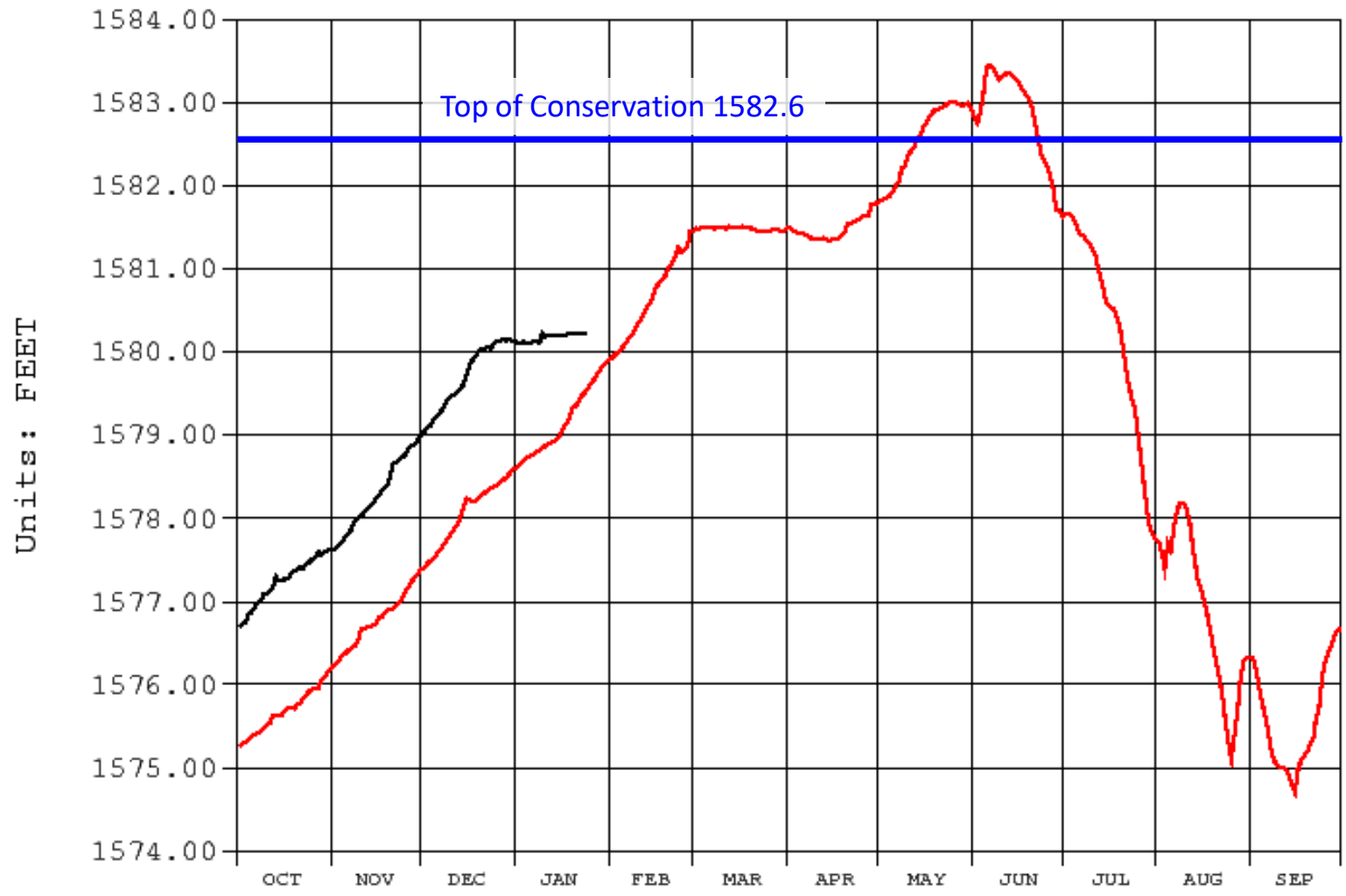


HCNE Harlan County Dam, NE
FB Reservoir Forebay Elevation (feet)

2024 2023



Archive Data From 1-OCT Through 30-SEP
Plotted 01/25/2024 06:50 (Provisional Data Subject to Revision)



LVKS Lovewell Dam, KS
FB Reservoir Forebay Elevation (feet)

2024 2023



HARLAN COUNTY LAKE 2024 WATER SUPPLIES

- 2024 Estimated Irrigation Supply: **103,200 AF**
 - Projected Irrigation Supply < 119 kAF
- **WATER–SHORT YEAR**
 - Water Short Year Administration in effect
 - Two-year accounting (Compact)



BOSTWICK WATER SUPPLIES

2024 WATER SUPPLIES

Total Irrigation Supply (AF): 103,200 AF

	<u>2024</u>
Bostwick in NE ID	40,500 AF
Kansas Bostwick	62,700 AF



Water Deliveries

<u>Irrigation District</u>	<u>2023</u>	<u>2024 (Projected)</u>
Frenchman-Valley	0.0 Inches	0.0 Inches
Frenchman-Cambridge	6.1 Inches	7.5 Inches
Nebraska-Bostwick	6.2 Inches	7.5 Inches
Kansas-Bostwick	11.1 Inches	13.0 Inches
Almena	0.0 Inches	6.0 Inches



Questions?



— BUREAU OF —
RECLAMATION

Craig Scott
cscott@usbr.gov